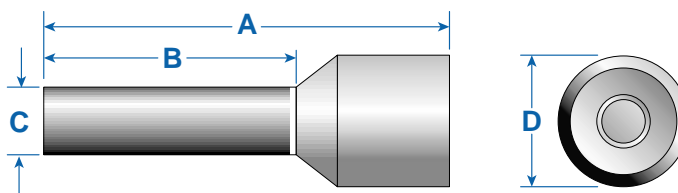


FERRULES, INSULATED Industry Standard

INDUSTRY STANDARD FERRULES

Ferrules insure reliable electrical connections when terminating stranded flexible wire in terminal blocks, circuit breakers or other control devices. Insulated ferrules prevent conductor breakage due to bending, wire stress or vibration while facilitating wire insertion into the terminal clamp.



Altech's standard insulated ferrules are color coded by conductor size for convenient identification.

To ensure efficient ferrule crimping, always select the smallest ferrule diameter that fits the wire and use only professional crimping tools. (Please refer to the ordering pages and the Crimper Selector Guide on pages 58-61.)

- Sleeve: polypropylene
- Tube: tin-plated copper

	AWG (mm ²)	Color	Type	Cat. No.	Stripping Length mm (in.)	Ferrule Dimensions mm (in.)				Std. Pk.*
						A	B	C	D	
	24 (.25)	Lt. Blue	HI 0.25/10	2620.0	6.0(.24)	10.0 (.39)	6.0 (.24)	1.2 (.05)	2.3 (.09)	500/100
	24 (.25)	Lt. Blue	HI 0.25/12	2621.0	8.0(.31)	12.0 (.47)	8.0 (.31)	1.2 (.05)	2.3 (.09)	500/100
	22 (.34)	Turquoise	HI 0.34/10	2622.0	6.0(.24)	10.0 (.39)	6.0 (.24)	1.2 (.05)	2.5 (.10)	500/100
	22 (.34)	Turquoise	HI 0.34/12	2623.0	8.0(.31)	12.0 (.47)	8.0 (.31)	1.2 (.05)	2.5 (.10)	500/100
	20 (.50)	Orange	HI 0.50/12	2397.0	6.0(.24)	12.0 (.47)	6.0 (.24)	1.3 (.05)	2.8 (.11)	500/100
	20 (.50)	Orange	HI 0.50/14	2201.0	8.0(.31)	14.0 (.55)	8.0 (.31)	1.3 (.05)	2.8 (.11)	500/100
	20 (.75)	White	HI 0.75/12	2398.0	6.0(.24)	12.0 (.47)	6.0 (.24)	1.5 (.06)	3.3 (.13)	500/100
	20 (.75)	White	HI 0.75/14	2202.0	8.0(.31)	14.0 (.55)	8.0 (.31)	1.5 (.06)	3.3 (.13)	500/100
	18 (1.00)	Yellow	HI 1.0/12	2399.0	6.0(.24)	12.0 (.47)	6.0 (.24)	1.7 (.07)	3.5 (.14)	500/100
	18 (1.00)	Yellow	HI 1.0/14	2203.0	8.0(.31)	14.0 (.55)	8.0 (.31)	1.7 (.07)	3.5 (.14)	500/100
	16 (1.50)	Red	HI 1.5/14	2204.0	8.0(.31)	14.0 (.55)	8.0 (.31)	2.0 (.08)	4.0 (.16)	500/100
	16 (1.50)	Red	HI 1.5/16	2400.0	10.0(.39)	16.0 (.63)	10.0(.39)	2.0 (.08)	4.0 (.16)	500/100
	16 (1.50)	Red	HI 1.5/24	2205.0	18.0(.71)	24.0 (.94)	18.0(.71)	2.0 (.08)	4.0 (.16)	500/100
	14 (2.50)	Blue	HI 2.5/14	2206.0	8.0(.31)	14.0 (.55)	8.0 (.31)	2.5 (.10)	4.7 (.19)	500/100
	14 (2.50)	Blue	HI 2.5/18	2401.0	12.0(.47)	18.0 (.71)	12.0(.47)	2.5 (.10)	4.7 (.19)	500/100
	14 (2.50)	Blue	HI 2.5/24	2207.0	18.0(.71)	24.0 (.94)	18.0(.71)	2.5 (.10)	4.7 (.19)	500/100
	12 (4.00)	Gray	HI 4.0/17	2208.0	10.0(.39)	17.0 (.67)	10.0(.39)	3.2 (.13)	5.4 (.21)	500/100
	12 (4.00)	Gray	HI 4.0/20	2402.0	12.0(.47)	20.0 (.79)	12.0(.47)	3.2 (.13)	5.4 (.21)	500/100
	12 (4.00)	Gray	HI 4.0/26	2209.0	18.0(.71)	26.0 (1.02)	18.0(.71)	3.2 (.13)	5.4 (.21)	100
	10 (6.00)	Black	HI 6.0/20	2210.0	12.0(.47)	20.0 (.79)	12.0(.47)	3.9 (.15)	6.9 (.27)	100
	10 (6.00)	Black	HI 6.0/26	2211.0	18.0(.71)	26.0 (1.02)	18.0(.71)	3.9 (.15)	6.9 (.27)	100
	8 (10.00)	Ivory	HI 10.0/22	2212.0	12.0(.47)	22.0 (.87)	12.0(.47)	4.9 (.19)	8.4 (.33)	100
	8 (10.00)	Ivory	HI 10.0/28	2213.0	18.0(.71)	28.0 (1.10)	18.0(.71)	4.9 (.19)	8.4 (.33)	100
	6 (16.00)	Green	HI 16.0/24	2214.0	12.0(.47)	24.0 (.94)	12.0(.47)	6.2 (.24)	9.6 (.38)	100
	6 (16.00)	Green	HI 16.0/28	2215.0	18.0(.71)	28.0 (1.10)	18.0(.71)	6.2 (.24)	9.6 (.38)	100
	4 (25.00)	Brown	HI 25.0/30	2267.0	18.0(.71)	30.0 (1.18)	18.0(.71)	7.7 (.30)	12.0(.47)	50
	4 (25.00)	Brown	HI 25.0/36	2272.0	22.0(.87)	36.0 (1.42)	22.0(.87)	7.7 (.30)	12.0(.47)	50
	2 (35.00)	Beige	HI 35.0/30	2276.0	18.0(.71)	30.0 (1.18)	18.0(.71)	8.7 (.34)	13.5(.53)	50
	2 (35.00)	Beige	HI 35.0/39	2390.0	25.0(.98)	39.0 (1.54)	25.0(.98)	8.7 (.34)	13.5(.53)	50
	1 (50.00)	Olive	HI 50.0/36	2500.0	20.0(.79)	36.0 (1.42)	20.0(.79)	10.9(.43)	16.0(.63)	50
	2/0 (70.00)	Yellow	HI 70.0/37	2786.0	20.0(.79)	37.0 (1.46)	20.0(.79)	13.4(.53)	17.0(.67)	25
	3/0 (95.00)	Red	HI 95.0/44	2787.0	25.0(.98)	44.0 (1.73)	25.0(.98)	15.4(.61)	19.0(.75)	25
	4/0 (120.00)	Blue	HI 120.0/48	2788.0	27.0(1.06)	48.0 (1.89)	27.0(1.06)	17.6(.69)	22.4(.88)	25
	250MCM(150.0)	Yellow	HI 150.0/58	2789.0	32.0(1.26)	58.0 (2.28)	32.0(1.26)	20.5(.81)	25.0(.98)	25

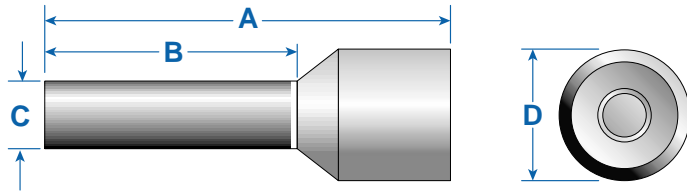
* Different standard packs are available as shown. To order the desired standard pack, please use the quantity required as a suffix to the cat. no.

Example for 100 standard pack: Type HI 0.25/10, Cat. No. 2620.0/100

FERRULES, INSULATED DIN Standard

DIN STANDARD FERRULES

Ferrules insure reliable electrical connections when terminating stranded flexible wire in terminal blocks, circuit breakers or other control devices.



Insulated ferrules prevent conductor breakage due to bending, wire stress or vibration while facilitating wire insertion into the terminal clamp.

Altech's DIN standard ferrules are in compliance with DIN requirements, making them ideal for export applications. They also have a specified color code convention that differs from the color code used for Altech's industry standard ferrules.

To ensure efficient ferrule crimping, always select the smallest ferrule diameter that fits the wire and use only professional crimping tools. (Please refer to the ordering pages and the Crimper Selector Guide on pages 58-61.)

- Sleeve: polypropylene
- Tube: tin plated copper

	AWG (mm ²)	Color	Type	Cat. No.	Stripping Length mm (in.)	Ferrule Dimensions mm (in.)				Std. Pk.*
						A	B	C	D	
	20 (.50)	White	HD 0.50/12	2863.0	6.0(.24)	12.0 (.47)	6.0 (.24)	1.3 (.05)	2.8 (.11)	500/100
	20 (.50)	White	HD 0.50/14	2864.0	8.0(.31)	14.0 (.55)	8.0 (.31)	1.3 (.05)	2.8 (.11)	500/100
	20 (.50)	White	HD 0.50/16	2865.0	10.0(.39)	16.0 (.63)	10.0(.39)	1.3 (.05)	2.8 (.11)	500/100
	20 (.75)	Gray	HD 0.75/12	2866.0	6.0(.24)	12.0 (.47)	6.0 (.24)	1.5 (.06)	3.3 (.13)	500/100
	20 (.75)	Gray	HD 0.75/14	2867.0	8.0(.31)	14.0 (.55)	8.0 (.31)	1.5 (.06)	3.3 (.13)	500/100
	20 (.75)	Gray	HD 0.75/16	2868.0	10.0(.39)	16.0 (.63)	10.0(.39)	1.5 (.06)	3.3 (.13)	500/100
	20 (.75)	Gray	HD 0.75/18	2869.0	12.0(.47)	18.0 (.71)	12.0(.47)	1.5 (.06)	3.3 (.13)	500/100
	18 (1.00)	Red	HD 1.0/12	2870.0	6.0(.24)	12.0 (.47)	6.0 (.24)	1.7 (.07)	3.5 (.14)	500/100
	18 (1.00)	Red	HD 1.0/14	2871.0	8.0(.31)	14.0 (.55)	8.0 (.31)	1.7 (.07)	3.5 (.14)	500/100
	18 (1.00)	Red	HD 1.0/16	2872.0	10.0(.39)	16.0 (.63)	10.0(.39)	1.7 (.07)	3.5 (.14)	500/100
	18 (1.00)	Red	HD 1.0/18	2840.0	12.0(.47)	18.0 (.71)	12.0(.47)	1.7 (.07)	3.5 (.14)	500/100
	16 (1.50)	Black	HD 1.5/14	2841.0	8.0(.31)	14.0 (.55)	8.0 (.31)	2.0 (.08)	4.0 (.16)	500/100
	16 (1.50)	Black	HD 1.5/16	2842.0	10.0(.39)	16.0 (.63)	10.0(.39)	2.0 (.08)	4.0 (.16)	500/100
	16 (1.50)	Black	HD 1.5/18	2843.0	12.0(.47)	18.0 (.71)	12.0(.47)	2.0 (.08)	4.0 (.16)	500/100
	16 (1.50)	Black	HD 1.5/24	2844.0	18.0(.71)	24.0 (.94)	18.0(.71)	2.0 (.08)	4.0 (.16)	500/100
	14 (2.50)	Blue	HD 2.5/14	2845.0	8.0(.31)	14.0 (.55)	8.0 (.31)	2.5 (.10)	4.7 (.19)	500/100
	14 (2.50)	Blue	HD 2.5/18	2846.0	12.0(.47)	18.0 (.71)	12.0(.47)	2.5 (.10)	4.7 (.19)	500/100
	14 (2.50)	Blue	HD 2.5/24	2847.0	18.0(.71)	24.0 (.94)	18.0(.71)	2.5 (.10)	4.7 (.19)	500/100
	12 (4.00)	Gray	HD 4.0/17	2848.0	10.0(.39)	17.0 (.71)	10.0(.39)	3.2 (.13)	5.4 (.21)	500/100
	12 (4.00)	Gray	HD 4.0/20	2849.0	12.0(.47)	20.0 (.79)	12.0(.47)	3.2 (.13)	5.4 (.21)	500/100
	12 (4.00)	Gray	HD 4.0/26	2850.0	18.0(.71)	26.0 (1.02)	18.0(.71)	3.2 (.13)	5.4 (.21)	100
	10 (6.00)	Yellow	HD 6.0/20	2851.0	12.0(.47)	20.0 (.79)	12.0(.47)	3.9 (.16)	6.9 (.27)	100
	10 (6.00)	Yellow	HD 6.0/26	2852.0	18.0(.71)	26.0 (1.02)	18.0(.71)	3.9 (.16)	6.9 (.27)	100
	8 (10.00)	Red	HD 10.0/22	2853.0	12.0(.47)	22.0 (.87)	12.0(.47)	4.9 (.20)	8.4 (.33)	100
	8 (10.00)	Red	HD 10.0/28	2854.0	18.0(.71)	28.0 (1.10)	18.0(.71)	4.9 (.20)	8.4 (.33)	100
	6 (16.00)	Blue	HD 16.0/24	2855.0	12.0(.47)	24.0 (.87)	12.0(.47)	6.2 (.24)	9.6 (.38)	100
	6 (16.00)	Blue	HD 16.0/28	2856.0	18.0(.71)	28.0 (1.10)	18.0(.71)	6.2 (.24)	9.6 (.38)	100
	4 (25.00)	Yellow	HD 25.0/30	2857.0	18.0(.71)	30.0 (1.18)	18.0(.71)	7.7 (.30)	12.0(.47)	50
	4 (25.00)	Yellow	HD 25.0/36	2858.0	22.0(.87)	36.0 (1.5)	22.0(.87)	7.7 (.30)	12.0(.47)	50
	2 (35.00)	Red	HD 35.0/30	2859.0	18.0(.71)	30.0 (1.18)	18.0(.71)	8.7 (.34)	13.5(.53)	50
	2 (35.00)	Red	HD 35.0/39	2860.0	25.0(.98)	39.0 (1.54)	25.0(.98)	8.7 (.34)	13.5(.53)	50
	1 (50.00)	Blue	HD 50.0/36	2861.0	20.0(.79)	36.0 (1.5)	20.0(.79)	10.9(.43)	16.0(.63)	50

* Different standard packs are available as shown. To order the desired standard pack, please use the quantity required as a suffix to the cat. no.

Example for 100 standard pack: Type HD 0.50/12, Cat. No. 2863.0/100

FERRULES Uninsulated

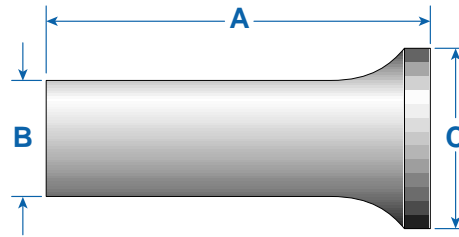
UNINSULATED FERRULES

Ferrules insure reliable electrical connections when terminating stranded flexible wire in terminal blocks, circuit breakers or other control devices.

Uninsulated ferrules prevent wire strands from fraying and breaking and are extremely cost effective. Their shorter lengths and uninsulated bodies offer advantages when making terminations in printed circuit board terminal blocks and in other terminal blocks with smaller clamps or narrow widths.

To ensure efficient ferrule crimping, always select the smallest ferrule diameter that fits the wire and use only professional crimping tools. (Please refer to the ordering pages and the Crimper Selector Guide on pages 58-61.)

- Tube: tin plated copper



	AWG (mm ²)	Type	Cat. No.	Stripping Length mm (in.)	Ferrule Dimensions mm (in.)			Std. Pk.*
					A	B	C	
	20 (.50)	HU 0.50/6	2216.0	6.0 (.24)	6.0 (.24)	1.3 (.05)	2.1 (.08)	1000/100
	20 (.75)	HU 0.75/6	2217.0	6.0 (.24)	6.0 (.24)	1.5 (.06)	2.3 (.09)	1000/100
	20 (.75)	HU 0.75/10	2218.0	10.0 (.39)	10.0 (.39)	1.5 (.06)	2.3 (.09)	1000/100
	18 (1.00)	HU 1.0/6	2219.0	6.0 (.24)	6.0 (.24)	1.7 (.07)	2.5 (.10)	1000/100
	18 (1.00)	HU 1.0/10	2220.0	10.0 (.39)	10.0 (.39)	1.7 (.07)	2.5 (.10)	1000/100
	16 (1.50)	HU 1.5/7	2221.0	7.0 (.28)	7.0 (.28)	2.3 (.09)	2.8 (.11)	1000/100
	16 (1.50)	HU 1.5/10	2222.0	10.0 (.39)	10.0 (.39)	2.3 (.09)	2.8 (.11)	1000/100
	14 (2.50)	HU 2.5/7	2223.0	7.0 (.28)	7.0 (.28)	2.5 (.10)	3.4 (.13)	1000/100
	14 (2.50)	HU 2.5/12	2224.0	12.0 (.47)	12.0 (.47)	2.5 (.10)	3.4 (.13)	1000/100
	12 (4.00)	HU 4.0/9	2225.0	9.0 (.35)	9.0 (.35)	3.2 (.13)	4.0 (.16)	1000/100
	12 (4.00)	HU 4.0/12	2226.0	12.0 (.47)	12.0 (.47)	3.2 (.13)	4.0 (.16)	1000/100
	10 (6.00)	HU 6.0/12	2227.0	12.0 (.47)	12.0 (.47)	3.9 (.15)	4.7 (.19)	500/100
	10 (6.00)	HU 6.0/15	2388.0	15.0 (.59)	15.0 (.59)	3.9 (.15)	4.7 (.19)	500/100
	8 (10.00)	HU 10.0/12	2228.0	12.0 (.47)	12.0 (.47)	4.9 (.19)	5.8 (.23)	500/100
	8 (10.00)	HU 10.0/15	2389.0	15.0 (.59)	15.0 (.59)	4.9 (.19)	5.8 (.23)	500/100
	8 (10.00)	HU 10.0/18	2229.0	18.0 (.71)	18.0 (.71)	4.9 (.19)	5.8 (.23)	500/100
	6 (16.00)	HU 16.0/12	2391.0	12.0 (.47)	12.0 (.47)	6.2 (.24)	7.5 (.30)	500/100
	6 (16.00)	HU 16.0/15	2392.0	15.0 (.59)	15.0 (.59)	6.2 (.24)	7.5 (.30)	500/100
	6 (16.00)	HU 16.0/18	2393.0	18.0 (.71)	18.0 (.71)	6.2 (.24)	7.5 (.30)	500/100
	4 (25.00)	HU 25.0/15	2394.0	15.0 (.59)	15.0 (.59)	7.7 (.30)	9.5 (.37)	500/100
	4 (25.00)	HU 25.0/18	2395.0	18.0 (.71)	18.0 (.71)	7.7 (.30)	9.5 (.37)	100
	2 (35.00)	HU 35.0/18	2396.0	18.0 (.71)	18.0 (.71)	8.7 (.34)	11.0 (.43)	100
	1/0 (50.00)	HU 50.0/32	2816.0	32.0 (1.26)	32.0 (1.26)	10.9 (.43)	13.0 (.51)	100
	2/0 (70.00)	HU 70.0/25	2790.0	26.0 (1.02)	25.0 (.98)	13.3 (.52)	15.0 (.59)	100
	3/0 (95.00)	HU 95.0/32	2791.0	30.0 (1.18)	32.0 (1.26)	15.3 (.60)	17.0 (.67)	50
	4/0 (120.00)	HU 120.0/32	2792.0	32.0 (1.26)	32.0 (1.26)	17.5 (.69)	19.0 (.75)	50
	250MCM(150.00)	HU 150.0/40	2793.0	38.0 (1.50)	40.0 (1.57)	19.5 (.77)	21.0 (.83)	50
	350MCM(185.00)	HU 185.0/40	2815.0	40.0 (1.57)	40.0 (1.57)	21.2 (.83)	23.5 (.93)	25

* Different standard packs are available as shown. To order the desired standard pack, please use the quantity required as a suffix to the cat. no.

Example for 100 standard pack: Type HU 0.50/6, Cat. No. 2216.0/100

DUAL WIRE FERRULES

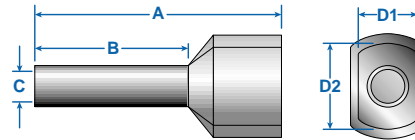
Insulated

Dual Wire Ferrules have larger diameters and special shaped sleeves that accept two conductors of the same or different size. They provide an efficient connection of multiple wires in the same terminal clamp or simplify wire jumpering between terminal clamps. They are color coded with the same convention as the insulated DIN standard ferrules.

To ensure efficient ferrule crimping always select the smallest ferrule diameter that fits the wire and use only professional crimping tools. (Please refer to the ordering pages and the Crimper Selector Guide on pages 58-61.)

- Sleeve: polypropylene
- Tube: tin plated copper

DUAL WIRE FERRULES



	Wires x AWG (mm2)	Color	Type	Cat. No.	Stripping Length mm (in.)		Ferrule Dimensions mm (in.)					Std. Pk.*
						A	B	C	D2	D1		
	2x22 (2x.50)	White	HH 2x0.50/15	2794.0	11.0 (.43)	14.6 (.57)	8.2 (.32)	1.7 (.07)	3.0 (.12)	5.0 (.20)	500/100	
	2x20 (2x.75)	Gray	HH 2x0.75/15	2775.0	11.0 (.43)	14.6 (.57)	8.2 (.32)	2.0 (.08)	3.0 (.12)	5.5 (.22)	500/100	
	2x20 (2x.75)	Gray	HH 2x0.75/17	2795.0	13.0 (.51)	16.4 (.65)	10.0 (.39)	2.0 (.08)	3.0 (.12)	5.5 (.22)	500/100	
	2x18 (2x1.0)	Red	HH 2x1.0/15	2776.0	11.0 (.43)	15.4 (.61)	8.2 (.32)	2.4 (.09)	3.2 (.13)	5.8 (.23)	500/100	
	2x18 (2x1.0)	Red	HH 2x1.0/20	2796.0	13.0 (.51)	25.2 (.99)	18.0 (.71)	2.4 (.09)	3.2 (.13)	5.8 (.23)	500/100	
	2x16 (2x1.5)	Black	HH 2x1.5/16	2777.0	12.0 (.47)	15.8 (.62)	8.2 (.32)	2.6 (.10)	3.6 (.14)	6.5 (.26)	500/100	
	2x16 (2x1.5)	Black	HH 2x1.5/20	2797.0	16.0 (.63)	19.6 (.77)	12.0 (.47)	2.6 (.10)	3.6 (.14)	6.5 (.26)	500/100	
	2x14 (2x2.5)	Blue	HH 2x2.5/19	2778.0	14.0 (.55)	18.5 (.73)	10.0 (.39)	3.3 (.13)	4.5 (.18)	8.0 (.31)	250/100	
	2x14 (2x2.5)	Blue	HH 2x2.5/21	2798.0	17.0 (.67)	20.5 (.80)	12.0 (.47)	3.3 (.13)	4.5 (.18)	8.0 (.31)	250/100	
	2x12 (2x4.0)	Gray	HH 2x4.0/22	2799.0	14.0 (.63)	22.0 (.87)	12.0 (.47)	3.9 (.15)	5.2 (.20)	9.0 (.35)	100	
	2x10 (2x6.0)	Yellow	HH 2x6.0/23	2800.0	18.0 (.75)	23.0 (.91)	12.0 (.47)	5.0 (.20)	6.2 (.24)	11.4 (.45)	100	
	2x8 (2x10.0)	Red	HH 2x10.0/24	2801.0	19.0 (.75)	24.0 (.94)	12.0 (.47)	6.2 (.24)	7.6 (.30)	13.4 (.53)	100	
	2x6 (2x16.0)	Blue	HH 2x16.0/29	2802.0	16.0 (.55)	29.0 (1.14)	16.0 (.63)	8.9 (.35)	9.5 (.37)	17.2 (.68)	100/50	



* Different standard packs are available for many ferrules. To order the desired standard pack, please use the quantity required as a suffix to the Cat. No. **Example: Type HH2x0.5/15, Cat. No. 2794.0/100 for a standard pack of 100**

INSULATED FERRULES Assortment Box

Handy Assortment Boxes for convenient dispensing and storage of Industry and DIN Standard Insulated Ferrules. Types AB1-S and AB1-D are equipped with five different ferrule sizes. Types AB2-S and AB2-D are equipped with four different ferrule sizes. Contents of each box is listed. Dimensions for industry and DIN standard insulated ferrules are listed on pages 53-54.



AB1-S



AB2-S

Ferrule Qty.	AWG (mm2)	Ferrule Type	Ferrule Cat. No.	Ferrule Color	Type	Cat. No.	Std. Pk.
AB1-S Industry Standard					AB1-S	2884.9	1
50	20 (.50)	HI 0.50/14	2201.0	Orange			
100	20 (.75)	HI 0.75/14	2202.0	White			
100	18 (1.00)	HI 1.0/12	2399.0	Yellow			
100	16 (1.50)	HI 1.5/14	2204.0	Red			
50	14 (2.50)	HI 2.5/14	2206.0	Blue			
AB2-S Industry Standard					AB2-S	2885.9	1
50	12 (.4.0)	HI 4.0/18	2208.0	Gray			
20	10 (6.0)	HI 6.0/20	2210.0	Black			
20	8 (10.0)	HI 10.0/22	2212.0	Ivory			
10	6 (16.0)	HI 16.0/22	2214.0	Green			
AB1-D DIN Standard					AB1-D	2884.0	1
50	20 (.50)	HD 0.50/14	2864.0	White			
100	20 (.75)	HD 0.75/14	2867.0	Gray			
100	18 (1.0)	HD 1.0/14	2871.0	Red			
100	16 (1.5)	HD 1.5/14	2841.0	Black			
50	14 (2.5)	HD 2.5/14	2845.0	Blue			
AB2-D DIN Standard					AB2-D	2885.0	1
50	12 (4.00)	HD 4.0/18	2848.0	Gray			
20	10 (6.00)	HD 6.0/20	2851.0	Yellow			
20	8 (10.00)	HD 10.0/22	2853.0	Red			
10	6 (16.00)	HD 16.0/22	2855.0	Blue			