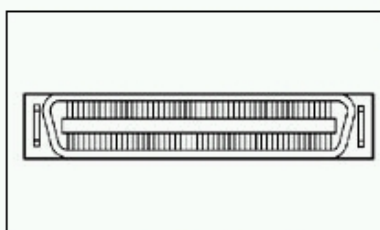
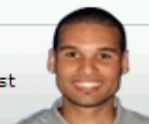


1-1734100-0 Product Details

Have a Question?

Chat with a Product Information Specialist



1-1734100-0

TE Internal Number: 1-1734100-0

Active

[View 3D PDF](#)

1.27 [.050] Series I, HD, FH and J Connectors

[Always EU RoHS/ELV Compliant \(Statement of Compliance\)](#)

Product Highlights:

- Connector
- Applies To Printed Circuit Board
- Housing Gender = Plug
- 100 Positions
- 1.27 mm Centerline

[View all Features](#)

Quick Links

- ▶ [Check Pricing & Availability](#)
- ▶ [Search for Tooling](#)
- ▶ [Product Feature Selector](#)
- ▶ [Contact Us About This Product](#)

[Add to My Part List](#) [Request Sample](#) [Find Similar Products](#) [Buy Product](#)

Documentation & Additional Information

Product Drawings:

- [PLUG ASSEMBLY, VERTICAL, 13.2mm, BOARD-TO-BOARD, CHA...](#) (PDF, English)

Catalog Pages/Data Sheets:

- None Available

Product Specifications:

- [Connector, CHAMP, 050, Board-To-Board, Vertical and ...](#) (PDF, English)

Application Specifications:

- None Available

Instruction Sheets:

- None Available

CAD Files: [\(CAD Format & Compression Information\)](#)

- [2D Drawing](#) (DXF, Version C)
- [3D Model](#) (IGES, Version C)
- [3D Model](#) (STEP, Version C)

[List all Documents](#)

Additional Information:

- [Product Line Information](#)

Related Products:

- [Tooling](#)

Product Features (Please use the Product Drawing for all design activity)

Product Type Features:

- [Product Type](#) = Connector
- [Profile](#) = Standard
- [PCB Mount Style](#) = Through Hole
- [PCB Mount Retention](#) = With
- [PCB Mount Angle](#) = Vertical
- [Type of Connector](#) = Series I
- [PCB Mount Polarization](#) = With
- [PCB Mount Polarization Type](#) = Keying Post
- [Retention Leg Material](#) = Brass
- [Color](#) = Black
- [Used For](#) = Board To Board Applications

Mechanical Attachment:

- [Retention Leg Plating](#) = Tin-Copper over Nickel

Termination Related Features:

- [Termination Post Length \(mm \[in\]\)](#) = 2.54 [0.100]
- [Solder Tail Contact Plating](#) = Tin

Body Related Features:

- [Number of Positions](#) = 100
- [Centerline \(mm \[in\]\)](#) = 1.27 [0.050]
- [PCB Mount Retention Type](#) = Boardlock(s)

Contact Related Features:

- [Contact Plating, Mating Area, Material](#) = Gold (30)
- [Contact Base Material](#) = Phosphor Bronze

Housing Related Features:

- [Housing Gender](#) = Plug
- [Housing Temperature Rating](#) = Standard
- [Housing Material](#) = Liquid Crystal Polymer (LCP)
- [UL Flammability Rating](#) = UL 94V-0

Industry Standards:

- [RoHS/ELV Compliance](#) = RoHS compliant, ELV compliant
- [Lead Free Solder Processes](#) = Wave solder capable to 240°C, Wave solder capable to 260°C, Wave solder capable to 265°C
- [RoHS/ELV Compliance History](#) = Always was RoHS compliant

Conditions for Usage:

- [Applies To](#) = Printed Circuit Board
- [PCB Thickness, Recommended \(mm \[in\]\)](#) = 0.80 - 1.60 [0.031 - 0.063]

Operation/Application:

- [Application](#) = VAFC (VESA Advanced Feature Connector)

Other:

- [Brand](#) = Tyco Electronics

BOOKMARK

Corporate Information

[Who We Are](#)
[Investors](#)
[News Room](#)
[Supplier Portal](#)
[Careers](#)

Quick Links

[Check Distributor Inventory](#)
[Cross Reference](#)
[Find Documents & Drawings](#)
[Product Compliance Support Center](#)
[Site Map](#)

Customer Support

[Email or Chat with Us](#)
[Find a Phone Number](#)
[Search Knowledge Base](#)
[Manage Your Account](#)

Sign up for our eNewsletter

Enter your email address

Follow us on: