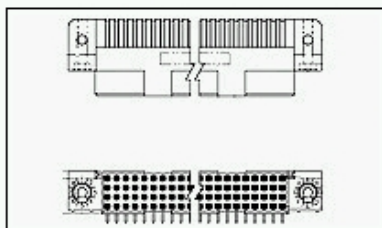
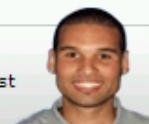


5532903-4 Product Details

Have a Question?

Chat with a Product Information Specialist



5532903-4

TE Internal Number: 5532903-4

 **Active**

AMP-HDI (Four Beam) & TBC (Twin Beam) Connectors

 [Always EU RoHS/ELV Compliant \(Statement of Compliance\)](#)

Product Highlights:

- Connector
- Receptacle
- 140 Positions
- PCB Mount Style = Through Hole
- PCB Mount Angle = Right Angle

[View all Features](#)

Quick Links

- ▶ [Check Pricing & Availability](#)
- ▶ [Search for Tooling](#)
- ▶ [Product Feature Selector](#)
- ▶ [Contact Us About This Product](#)

 [Add to My Part List](#)
 [Request Sample](#)
 [Find Similar Products](#)
 [Buy Product](#)

Documentation & Additional Information

Documents are temporarily unavailable. We are working hard to correct the problem. Please try again later.

Additional Information:

- [Product Line Information](#)

Related Products:

- [Tooling](#)

Product Features (Please use the Product Drawing for all design activity)

Product Type Features:

- [Product Type](#) = Connector
- [Gender](#) = Receptacle
- [PCB Mount Style](#) = Through Hole
- [PCB Mount Angle](#) = Right Angle
- [Make First / Break Last](#) = No
- [Mating Polarization](#) = Without
- [PCB Mount Retention](#) = Without

Termination Related Features:

- [Termination Post Length \(mm \[in\]\)](#) = 3.05 [0.120]
- [Solder Tail Contact Plating](#) = Tin

Body Related Features:

- [Number of Positions](#) = 140
- [Number of Rows](#) = 4
- [Centerline \(mm \[in\]\)](#) = 2.54 [0.100]

Contact Related Features:

- [Contact Type](#) = Four-Beam
- [Contact Plating, Mating Area, Material](#) = Gold (30)
- Contact Base Material = Copper Alloy
- Contact Underplating = Nickel

Housing Related Features:

- [Housing Material](#) = PPS
- Housing Color = Brown
- Housing Material Temperature = High

Configuration Related Features:

- Center Guide = Without

Industry Standards:

- Government/Industry Qualification = No
- [RoHS/ELV Compliance](#) = RoHS compliant, ELV compliant
- [Lead Free Solder Processes](#) = Wave solder capable to 240°C, Wave solder capable to 260°C, Wave solder capable to 265°C, Reflow solder capable to 245°C, Reflow solder capable to 260°C, Pin-in-Paste capable to 245°C, Pin-in-Paste capable to 260°C
- RoHS/ELV Compliance History = Always was RoHS compliant

Other:

- Brand = AMP

 BOOKMARK 

Corporate Information

[Who We Are](#)
[Investors](#)
[News Room](#)
[Supplier Portal](#)
[Careers](#)


Quick Links

[Check Distributor Inventory](#)
[Cross Reference](#)
[Find Documents & Drawings](#)
[Product Compliance Support Center](#)
[Site Map](#)

Customer Support

[Email or Chat with Us](#)
[Find a Phone Number](#)
[Search Knowledge Base](#)
[Manage Your Account](#)

Sign up for our eNewsletter

Enter your email address 

Follow us on: 