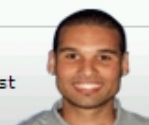


5750338-1 Product Details


Have a Question?

Chat with a Product Information Specialist




5750338-1

TE Internal Number: 5750338-1

 [Active](#)

Shielded Miniature Circular DIN Connectors

 [Always EU RoHS/ELV Compliant \(Statement of Compliance\)](#)

Product Highlights:

- Connector
- Mini DIN Connector Configuration
- 8 Positions
- PCB Mount Angle = Vertical
- Shielded

[View all Features](#)

Quick Links

- ▶ [Check Pricing & Availability](#)
- ▶ [Search for Tooling](#)
- ▶ [Product Feature Selector](#)
- ▶ [Contact Us About This Product](#)

 [Add to My Part List](#)  [Request Sample](#)  [Find Similar Products](#)  [Buy Product](#)

Documentation & Additional Information

Documents are temporarily unavailable. We are working hard to correct the problem. Please try again later.

Additional Information:

- [Product Line Information](#)

Related Products:

- [Tooling](#)

Product Features (Please use the Product Drawing for all design activity)

Product Type Features:

- [Product Type](#) = Connector
- [PCB Mount Angle](#) = Vertical
- [Front Panel Grounding](#) = Without
- [Front Panel Screw-Down](#) = Without
- [PCB Mount Retention](#) = Without
- [Gender](#) = Receptacle
- [Stacked](#) = No
- [Color Code](#) = None
- PCB Mount Style = Through Hole
- Inner Shield Material = Copper Alloy
- Outer Shield Material = Copper Alloy

Electrical Characteristics:

- [Shielded](#) = Yes

Termination Related Features:

- [Grounding Clips](#) = Without
- Solder Tail Contact Plating = Tin over Nickel

Body Related Features:

- Connector Configuration = Mini DIN
- [Number of Positions](#) = 8
- Inner Shield Plating = Tin over Copper
- Outer Shield Plating = Tin over Copper

Contact Related Features:

- [Contact Plating, Mating Area, Material](#) = Gold (15)
- Contact Base Material = Copper Alloy
- Contact Underplating = Nickel

Housing Related Features:

- Housing Material = Thermoplastic - GF
- UL Flammability Rating = UL 94V-0
- Housing Color = Black

Configuration Related Features:

- SPDIF Connector = Without

Industry Standards:

- [RoHS/ELV Compliance](#) = RoHS compliant, ELV compliant
- [Lead Free Solder Processes](#) = Wave solder capable to 240°C, Wave solder capable to 260°C, Wave solder capable to 265°C
- RoHS/ELV Compliance History = Always was RoHS compliant

Other:

- Brand = AMP

 [BOOKMARK](#) 

Corporate Information

[Who We Are](#)
[Investors](#)
[News Room](#)
[Supplier Portal](#)
[Careers](#)


Quick Links

[Check Distributor Inventory](#)
[Cross Reference](#)
[Find Documents & Drawings](#)
[Product Compliance Support Center](#)
[Site Map](#)

Customer Support

[Email or Chat with Us](#)
[Find a Phone Number](#)
[Search Knowledge Base](#)
[Manage Your Account](#)

Sign up for our eNewsletter

Enter your email address 

Follow us on: 