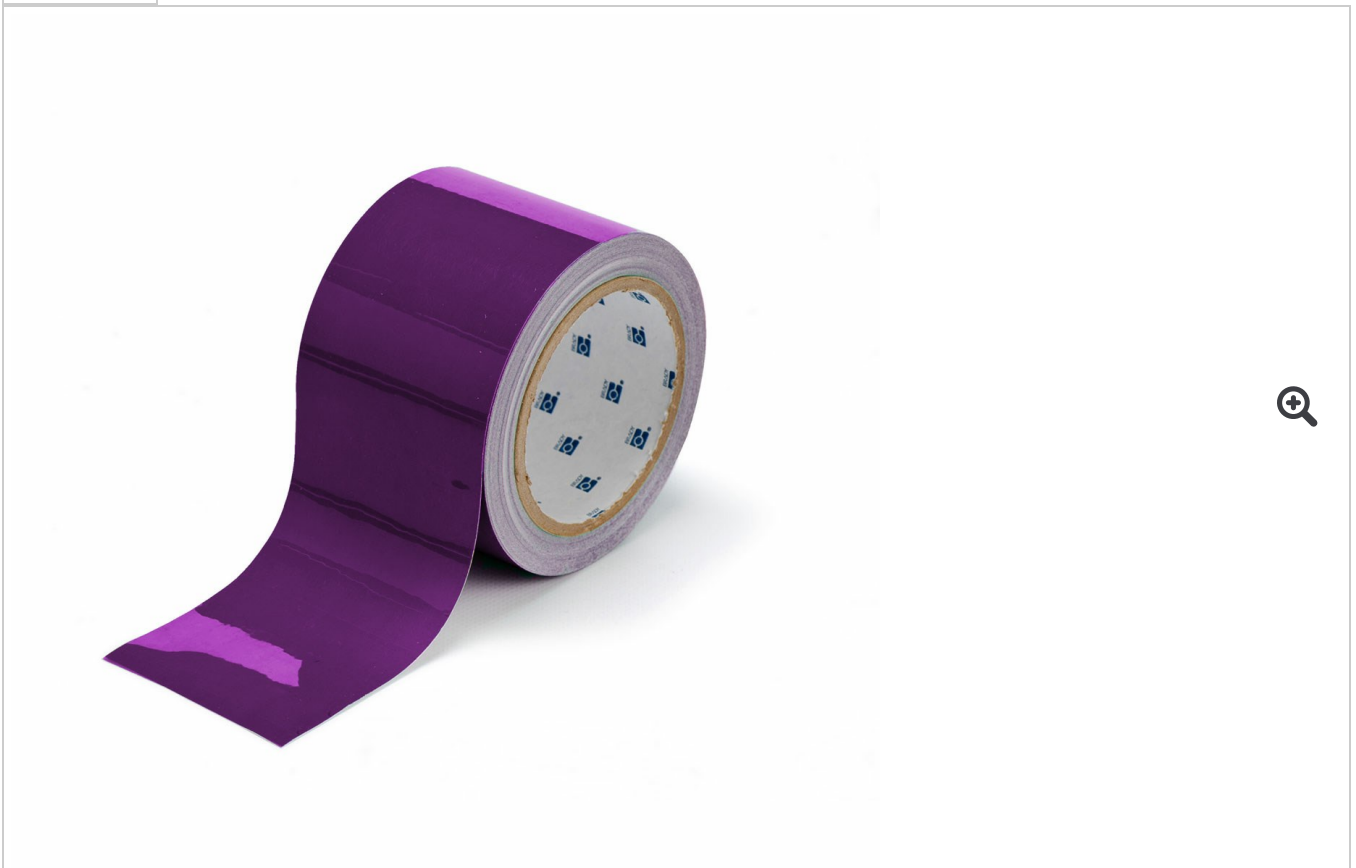
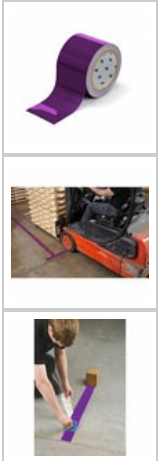


Tape / Floor Marking Tape /  
ToughStripe Floor Marking Tape

# ToughStripe Floor Marking Tape



## Product Highlights

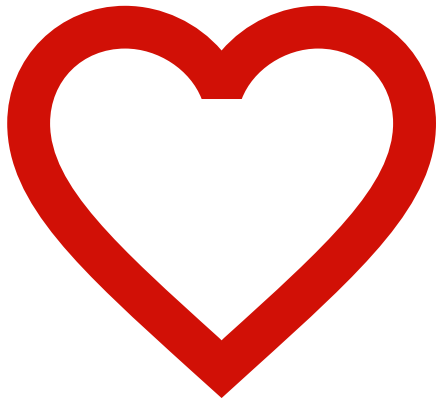
**Color:**  
Purple

**Dimensions:**  
3 in W x 100 ft L

**Part Number:**  
134087

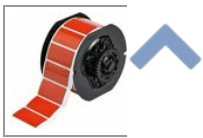
ADD TO CART

1



### Add To Favorites

People Also Viewed



Free ToughStripe sample pack



Download guide



## Overview

Extremely durable ToughStripe® floor marking tapes are made of rugged polyester with ultra-aggressive adhesive and hold up against forklift traffic.

- Visible floor-marking improves safety and organization in almost any industrial environment
- High-gloss surface shines like new paint and withstands forklift traffic without tearing or lifting

- Ideal for marking aisles, passageways and storage locations and identifying equipment and egress paths
- Can be easily applied by one person working alone

## Specifications

|                                |  |
|--------------------------------|--|
| Material Number                | <b>B-514</b>   |
| Country of Origin              | MX - All trade information (i.e. Country of Origin, Harmonized Schedule code, and/or Export Control Classification Number) and related assistance provided by Brady Corporation and its affiliates is provided for informational purposes only and is subject to change without notice. Any use of such information by you is without recourse to Brady Corporation or its affiliates and is at your own risk. This information is not provided as legal advice or as a substitute for obtaining specific legal advice. If you have any questions regarding your specific situation, you should consult your attorney. |
| Catalog Page #                 | 289  |
| Dimensions                     | 3 in W x 100 ft L  |
| UOM                            | Roll of 100 Feet   |
| Finish                         | Gloss  |
| Maximum Service Temperature °F | 130 °F   |
| Minimum Service Temperature °F | 0 °F   |
| Pattern Type                   | Solid  |
| PSPA Photoluminescence Class   | Not Rated  |
| Product Number                 | 134087   |
| UPC                            | 754473914608   |
| Roll/Tape Length               | 100 ft   |
| Roll/Tape Size                 | 100 ft L   |
| Thickness                      | 0.008 in   |
| Trade Name                     | ToughStripe®   |
| UNSPSC                         | 31201520   |
| Adhesive Type                  | Rubber   |
| Color                          | Purple   |
| Material                       | Polyester  |
| Reflective Type                | Non-Reflective   |
| Text Legend                    | No Text  |

# Support

## VIDEOS

[Toughstripe Forklift Test](#)

[Applying and Removing Brady's ToughStripe Floor Marking Tape - Demo Video](#)

## SOFTWARE/FIRMWARE UPDATES

### Firmware

[Floor Marking Guide - Color Standards & Best Practices](#)

## Solutions

[Floor Marking Guide](#)  
[GHS Label Compliance](#)  
[Lockout Tagout Compliance](#)  
[Arc Flash Labeling Requirements](#)  
[Cable and Wire Label Options](#)  
[Product and Barcode Labeling](#)

## Services

[Lockout Tagout Services](#)  
[Arc Flash Services](#)  
[Confined Space Services](#)  
[Software Programming & Integration](#)  
[Label Template & File Conversion](#)  
[Printer Use & Training](#)  
[Printer Preventative Maintenance](#)  
[Toll and Custom Coating](#)  
[Authentication & Tracking Services](#)

## Help

[Contact Us](#)  
[Website Feedback](#)  
[Knowledge Center](#)  
[Printer Drivers & Firmware](#)  
[Brady Software Updates](#)  
[Safety Data Sheets](#)  
[Technical Data Sheets](#)  
[WEEE-RoHS Compliance](#)  
[Product Certification](#)  
[Printer Registration](#)

## Resources

[Find a Distributor](#)  
[Design Custom Safety Signs](#)  
[Create Custom THT Labels](#)  
[Printer Selection Tool](#)  
[Label Selection Tool](#)  
[Digital Catalog](#)  
[Request a Catalog](#)  
[Interactive Facility Map](#)  
[EPA e-Manifest Update](#)

## Corporate

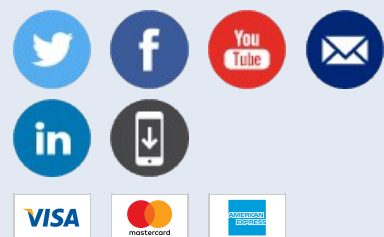
[About](#)  
[Careers](#)  
[Investors](#)  
[Privacy Policy](#)  
[Terms and Conditions](#)  
[Terms of Use](#)  
[ISO Certificates](#)

## Other BradyContact Sites

[Distributor Portal](#)  
[International Sites](#)  
[Safety Services & Software Brand Protection Solutions](#)

6555 W. Good Hope Rd. Milwaukee, WI 53223  
Phone: 888-250-3082  
Hours: 7am-6pm CT Monday - Thursday; Friday 7am-5pm CT

**Brady (NYSE:BRC) is a manufacturer of complete solutions that identify and protect people, products and places. Brady's products help customers increase safety, security, productivity and performance and include high-performance labels, signs, safety devices, printing systems and software.**



2019 © Brady Worldwide, Inc.