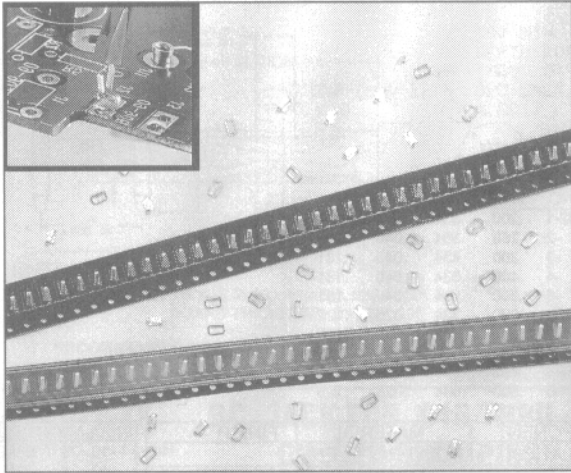


# PC TEST POINTS

## PRINTED CIRCUIT WIRE FORM PRODUCTS



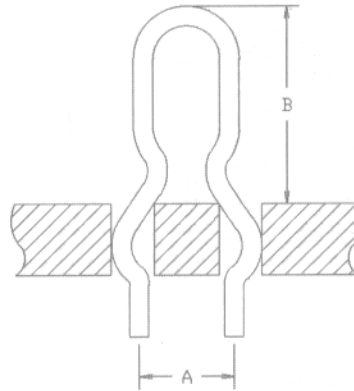
## SURFACE MOUNT TEST POINTS

- AVAILABLE IN BULK AND TAPE AND REEL FORMAT
- EASY ACESSES FOR BOARD LEVEL TESTING

## 707-54XX-XX

BASIC PART NO. COLOR

## PC TEST POINTS



PART NO.	A	B
707-5410	.100	.200
707-5411	.200	.300
707-5412	.250	.360
707-5413	.300	.400

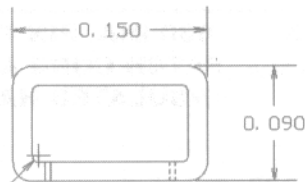
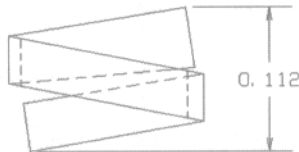
### SPECIFICATIONS:

Material: .020" Dia. 70/30 brass wire.  
 Finish: Bright, electro-tin 100 millionths min.  
 Mounting: Two, .040 Dia. +/- .003 plated through holes  
 Max. Current: 2 amperes

## 707-54XX-XX

BASIC PART NO. COLOR

## SURFACE MOUNT TEST POINT



RO. 005



### SPECIFICATIONS:

Contact material: .015"x.040" Phosphor Bronze, 1/2 Hard  
 Contact finish: .0001" Tin Lead plating over .0001" Copper.  
 Tape material: 12 mm wide; pitch: 4mm; conductive polycarbonate carrier meets ANSI/EIA-481 standard  
 Reel size: 7" -1000 pices per reel

Concord part number:

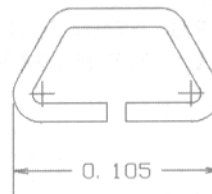
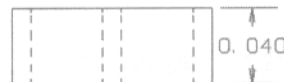
707-5404 BULK PACKAGE

707-5405 TAPE AND REEL FORMAT

## 707-5406-XX

BASIC PART NO. COLOR

## SURFACE MOUNT TEST PONTS



### SPECIFICATIONS:

Contact material: .010"x.040" Phosphor Bronze.  
 Contact finish: .0001" Tin Lead plating over .0001" Copper.  
 Tape material: 8 mm wide; pitch: 4mm; conductive polycarbonate carrier meets ANSI/EIA-481 standard  
 Reel size: 7" -1000 pices per reel

Concord part number:

707-5406 TAPE AND REEL FORMAT

FOR ADDITIONAL SIZES AND MATERIALS, CONTACT FACTORY