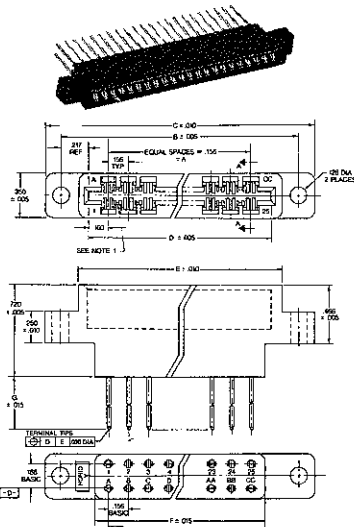


TRW CINCH CONNECTORS

PC BOARD CONNECTORS WITH TERMINALS ON .156 CENTERS

PRINTED CIRCUIT BOARD CONNECTORS/WITH WIRE WRAP .031 x .062 TERMINALS ON .156 CENTERS



FEATURES AND SPECIFICATIONS

CURRENT RATING: 3 amperes. Based upon all contacts carrying specified current and a temperature rise of 30°C above ambient.
RATED VOLTAGE (Sea Level): 900 V AC RMS 1200 V DC. (Based on 1/3 voltage breakdown)
TEST VOLTAGE (Sea Level): 2000 V AC RMS 2700 V DC. (Based on 75% voltage breakdown)

CONTACT RESISTANCE (Millivolt Drop @ 3 Amp): 16 millivolt max.
TOTAL INSERTION FORCE: 20 lbs. max. Performed in accordance with Paragraph 4.6.6.2 of MIL-C-21097 using .070 inch thick blade.

INDIVIDUAL CONTACT ENGAGING AND SEPARATION FORCE: 2-16 oz. Performed in accordance with Paragraph 4.6.6.1.1 of MIL-C-21097B using .062 inch thick blade.

INDIVIDUAL SEPARATION FORCE: 1 oz. min. Performed in accordance with Paragraph 4.6.6.1.2 of MIL-C-21097 using .054 inch thick blade.

DURABILITY: 100 cycles with steel blade .070 inch thick. Contact resistance and

individual contact separation force requirements met after test.

INSULATOR MATERIALS: General purpose impact phenolic — color black.

POLARIZING KEY: Nylon

CONTACT: Phosphor bronze

CONTACT PLATING: .00006 min. gold over copper in contacting area .0001 min. gold on remainder of contact.

GENERAL DESCRIPTION: 10 to 30 contact positions double read-out .156 center to center spacing. For 1/6 (.054-.070) thick printed circuit card. Bifurcated — cantilever type contacts. Wire wrap termination .031 x .062. Between contact polarizing.

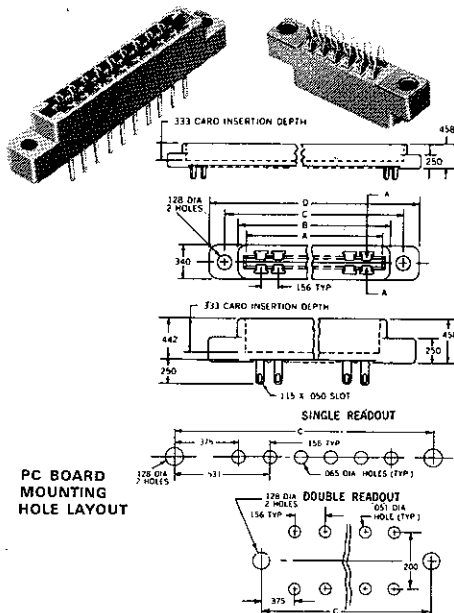
ORDERING INFORMATION Recognized under the Component Program of Underwriters' Laboratories, Inc.®

PART NUMBER	NO. OF CONTACTS	DIMENSIONS						
		A	B	C	D	E	F	G
253-10-00-253†	10/20	1.404	2.158	2.408	1.724	1.878	1.616	.550
253-10-00-254†	10/20	1.404	2.158	2.408	1.724	1.878	1.616	.755
253-10-00-255†	10/20	1.404	2.158	2.408	1.724	1.878	1.616	1.051
253-15-00-253†	15/30	2.184	2.938	3.188	2.504	2.658	2.396	.550
253-15-00-254†	15/30	2.184	2.938	3.188	2.504	2.658	2.396	.755
253-15-00-255†	15/30	2.184	2.938	3.188	2.504	2.658	2.396	1.051
253-18-00-253†	18/36	2.652	3.406	3.656	2.972	3.126	2.864	.550
253-18-00-254†	18/36	2.652	3.406	3.656	2.972	3.126	2.864	.755
253-18-00-255†	18/36	2.652	3.406	3.656	2.972	3.126	2.864	1.051
253-22-00-253†	22/44	3.276	4.030	4.280	3.596	3.750	3.488	.550
253-22-00-254†	22/44	3.276	4.030	4.280	3.596	3.750	3.488	.755
253-22-00-255†	22/44	3.276	4.030	4.280	3.596	3.750	3.488	1.051
253-25-00-253†	25/50	3.744	4.498	4.748	4.064	4.218	3.956	.550
253-25-00-254†	25/50	3.744	4.498	4.748	4.064	4.218	3.956	.755
253-25-00-255†	25/50	3.744	4.498	4.748	4.064	4.218	3.956	1.051
253-30-00-253†	30/60	4.524	5.278	5.528	4.844	4.998	4.736	.550
253-30-00-254†	30/60	4.524	5.278	5.528	4.844	4.998	4.736	.755
253-30-00-255†	30/60	4.524	5.278	5.528	4.844	4.998	4.736	1.051

† Indicates items available through Cinch Distributors.

SPECIAL PURPOSE .156 CENTER PC BOARD EDGE CONNECTORS

PC BOARD EDGE CONNECTORS FOR INTERCONNECTING TWO OR MORE STANDARD 1/6" PRINTED CIRCUIT BOARDS



RATED VOLTAGE: AC RMS, adj. terminals 830 V (Sea Level) 300 V (3.4 Hg. 50,000 feet); 200 V (1.3 Hg. 70,000 feet).

CURRENT: 5.0 Amps.

PLATING: All contacts selective plated — 30 micro-inches gold in contacting area and 10 micro-inches gold on remainder of contact.

CONTACT RESISTANCE: .005 Ohms at Rated Current.

INSULATION RESISTANCE: 5000 Meg-ohms.

ENVIRONMENTAL: Per MIL-C-21097 and MIL-STD-202, latest versions.

SHOCK: 3 blows of 50G, Method 202B.

TEMPERATURE CYCLING: 5 continuous cycles per Method 107B, Test Condition B.

TEMPERATURE CYCLING: 5 continuous cycles per Method 107B, Test Condition B.

TEMPERATURE CYCLING: 5 continuous cycles per Method 107B, Test Condition B.

TEMPERATURE CYCLING: 5 continuous cycles per Method 107B, Test Condition B.

TEMPERATURE CYCLING: 5 continuous cycles per Method 107B, Test Condition B.

TEMPERATURE CYCLING: 5 continuous cycles per Method 107B, Test Condition B.

TEMPERATURE CYCLING: 5 continuous cycles per Method 107B, Test Condition B.

TEMPERATURE CYCLING: 5 continuous cycles per Method 107B, Test Condition B.

ORDERING INFORMATION

NO. OF CONTACT POSITIONS	CARD EXTENDER	EXTENDED DIP SOLDER TERMINATIONS	
	DOUBLE READOUT PART NUMBER	SINGLE READOUT PART NUMBER	DOUBLE READOUT PART NUMBER
6	251-06-30-390	252-06-30-230	252-06-30-260
10	251-10-30-390	252-10-30-230	252-10-30-260
12	251-12-30-390	252-12-30-230	252-12-30-260
15	251-15-30-390	252-15-30-230	252-15-30-260
18	251-18-30-390	252-18-30-230	252-18-30-260
22	251-22-30-390	252-22-30-230	252-22-30-260
25	251-25-30-390	252-25-30-230	252-25-30-260

All connectors listed are available "off-the-shelf" from Cinch Distributors.

DIMENSIONAL DATA

NO. OF CONTACT POSITIONS	A	B	C	D
6	1.100	1.239	1.531	1.785
10	1.724	1.864	2.156	2.410
12	2.036	2.177	2.469	2.723
15	2.504	2.645	2.937	3.191
18	2.972	3.114	3.406	3.660
22	3.596	3.739	4.031	4.285
25	4.067	4.208	4.500	4.754