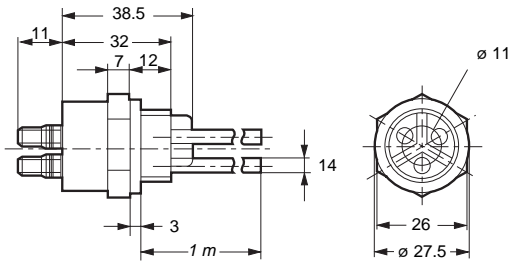


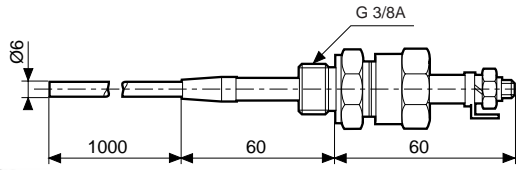
Electrode holders and probes

Accessories for types EN / END



79 696 044 - (S8)

A light, compact, 3-probe electrode holder (stainless steel).
Electrode holder and 1000 mm probe.
Particularly recommended for drinks vending machines and in cases where installation space is limited.
Ambient temperature : 80 °C
Max. pressure : 2 kg/cm²



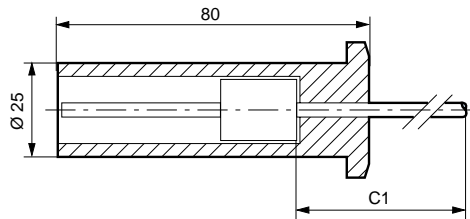
79 696 014 - (S3)

Electrode holder with a single probe supplied in a standard length of 1000 mm. (304 stainless steel).
Mounting with external 3/8" BSP thread and hexagonal head. Use 24 mm. spanner for hexagon. Suitable for use on boilers, autoclaves and under high temperature conditions up to 200°C and high pressure conditions up to 25 kg/cm².

3

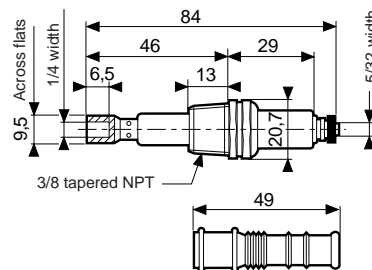


S7



79 696 043 - (S7)

Protected electrode for mounting by suspension
Protective shell: PUC (S7).
Electrode: stainless steel
Length of cable as requested (ref. C1) :
79 696 001



79 696 006 - (S5)

Suitable for high pressures and high temperatures. For use up to 350 °C and 15 kg/cm².
Metal parts of stainless steel, isolated by ceramic.
3/8" BSP mounting thread.