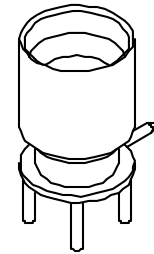
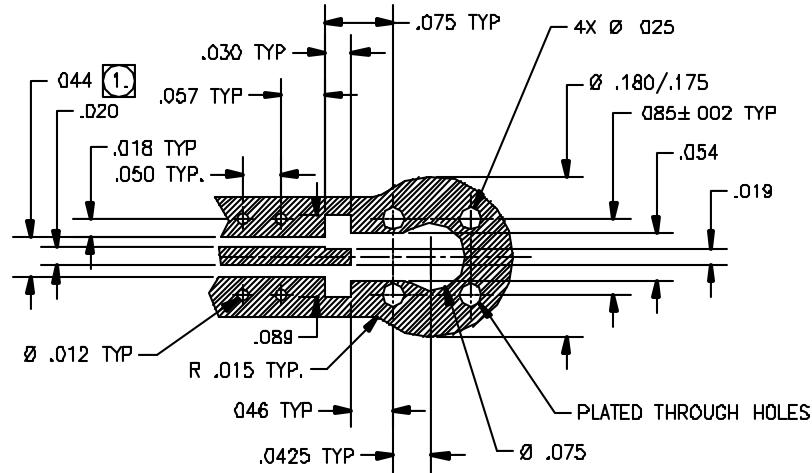


P/N	INTERFACE(S)	(Ø A)	(B)	FIGURE(S)
-1CC	FULL DETENT	(.116)	.075	1
-2CC	LIMITED DETENT	(.120)	.075	1
-3CC	SMOOTH BORE	(.125)	.075	1
-4CC	CATCHER'S MITT	(.125)	.075	2
-5CC	FULL DETENT	(.116)	.140	1
-6CC	LIMITED DETENT	(.120)	.140	1
-7CC	SMOOTH BORE	(.125)	.140	1
-8CC	CATCHER'S MITT	(.125)	.140	2

REVISIONS			
REV	DESCRIPTION	DATE	BY
G	ECO 13311	05.10.01	ATV
H	ECO 200B4	03.26.07	DKN
J	ECO 255B1	04.19.12	DKN



MOUNTING HOLE PATTERN

① DIMENSIONS SHOWN ARE FOR ROGERS 4350 PCB MATERIAL. THESE DIMENSIONS MAY VARY DEPENDING ON PCB MATERIAL USED.

MATERIAL	ELECTRICAL	MECHANICAL	ENVIRONMENTAL
Body: BeCu alloy per ASTM B-196. Center Conductor: Brass alloy per ASTM B-16. Insulator: Torlon per AMS 3670 or ASTM D-5204	Impedance: 50 Ohms nominal. Frequency Range: DC to 18 GHz VSWR: 1.15:1 max to 18 GHz. Insertion Loss: 10 dB max to 18 GHz. Working Voltage: 335 Vrms max @ sea level. Dielectric Withstanding Voltage: 500 Vrms min. RF HiPot Voltage: 325 Vrms min @ 5MHz. Corona Level 125 Vrms @ 70,000 ft. Insulation Resistance: 50X10 MegOhms min. Contact Resistance: Center Contact: 6.0 Milliohm max. Outer Contact: 2.0 Milliohm max.	Mating Characteristics: Interface per Mil-Std-348. Force To Engage & Disengage: Engage: Full detent: 10.0 lbs max Limited detent: 5.0 max Smooth bore/Catchers mitt: 2.0 lbs max Disengage: Full detent: 2.0 lbs min Limited detent: 1.5 lbs min Smooth bore/Catchers mitt: .50 lbs min Center Contact Retention: Axial Force: 1.5 pounds min. Radial Torque: NA Connector Durability: Depend on detent	Temperature Range: -65°C to +165°C. Thermal Shock: Mil-Std-202, Method 107, Test Cond B Moisture Resistance: Mil-Std-202, Method 106, except step 7b shall be omitted. Insulation resistance at least 100D MegOhms within 5 minutes after removal from humidity. Corrosion: Mil-Std-202, Method 101, Test Cond B Vibration: Mil-Std-202, Method 204, Test Cond D Shock Mil-Std-202, Method 213, Test Cond I.

FINISH:
Body & Center Conductor. Gold plate per ASTM B-488, over nickel under plate per AMS-QQ-N-290.

APPLICABLE CARLISLE IT DOCUMENTS		
WORK STD	PROD INST	ASSY INST
NA	NA	NA

NOTICE

THIS DRAWING CARRIES A PROPERTY INTEREST WHICH IS RESERVED BY CARLISLE INTERCONNECT TECHNOLOGIES, CORP. AND ALL RIGHTS, INCLUDING PATENT, TRADE SECRET, AND ALL OTHER RIGHTS ARE EXPRESSLY RESERVED. IT IS FORWARDED UNDER A CONFIDENTIAL RELATIONSHIP TO YOU BY CARLISLE INTERCONNECT TECHNOLOGIES, CORP. IN ACCORDANCE WITH THE PROVISIONS OF THE EXPORT ADMINISTRATION REGULATIONS. IT IS NOT TO BE REPRODUCED OR TRANSMITTED IN ANY FORM OR BY ANY MEANS, ELECTRONIC OR MECHANICAL, INCLUDING PHOTOCOPYING, RECORDING, OR BY ANY INFORMATION STORAGE AND RETRIEVAL SYSTEM, WITHOUT THE WRITTEN PERMISSION OF CARLISLE INTERCONNECT TECHNOLOGIES, CORP. ANY UNAUTHORIZED REPRODUCTION OR TRANSMISSION OF THIS DRAWING IS PROHIBITED. ALL RIGHTS RESERVED. CARLISLE INTERCONNECT TECHNOLOGIES, CORP. 2012

TOLERANCES AND NOTES EXCEPT AS NOTED	
NUMBERS ARE IN INCHES	
LINEAR .003 ± .001	ANGULAR ± 1/2°
FRACTIONS ± 1/32	
1. MACHINED FINISH: RA/ RMS	
2. BREAK ALL SHARP EDGES .001 MAX	
3. MACHINED FILICES: .005 MAX	
4. MACHINED SURFACES: SQUARE TO RESPECTIVE AXIS PER .001 INCHES PER INCH	
5. MACHINED DIAMETERS: CONCENTRIC WITH .002 TLR.	
6. DIMENSIONS TO BE MET BEFORE PLATING.	
7. STRAIGHTEN ALL TAPERED .015	
8. THROUGH PER .001	
9. REMOVE PLATED EDGES ON TIE LINES	
10. REMOVE ALL BURRS	

MATERIAL		SPECIFICATION		PROCUREMENT	
APPROVAL INITIALS	DATE	 SMP MALE STRAIGHT PCB SURFACE MOUNT			
DRAWN BY: DKN	08.10.08				
CHECKED BY: PMAO	04.18.12				
TEST ENG:					
QUALITY		SCALE: 16:1	INVENTORY AND CONTROL	REV: 1 OF 2	
BEIGN BWH	JCB	03.26.07			
MFG DWG		SIZE: DASH DRAWING NO			
ECO APPR: PMAO	04.19.12	C 30990	P797		J

4

3

2

1

D

D

SMP MALE
INTERFACE PER
MIL-STD-348

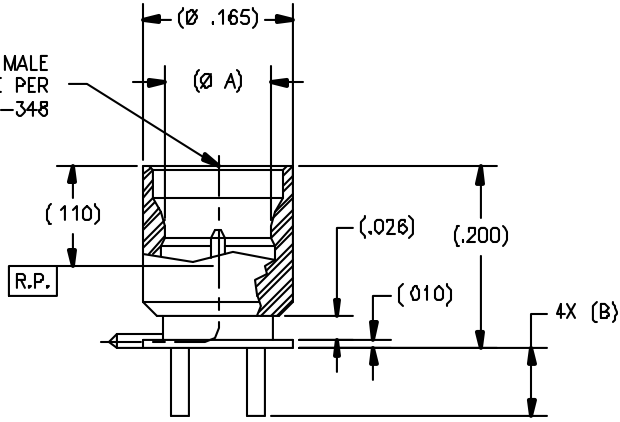
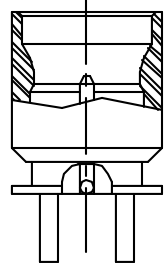


FIG. 1

C

C

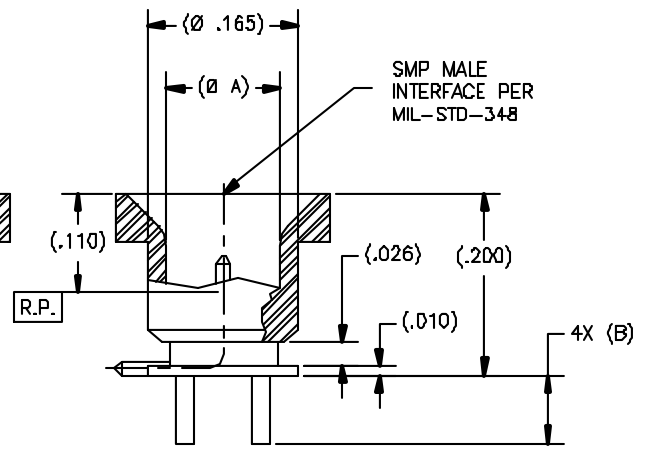
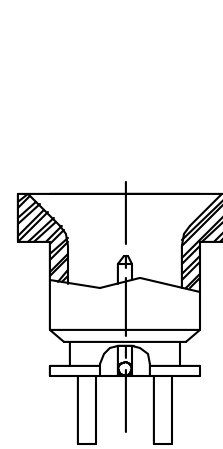
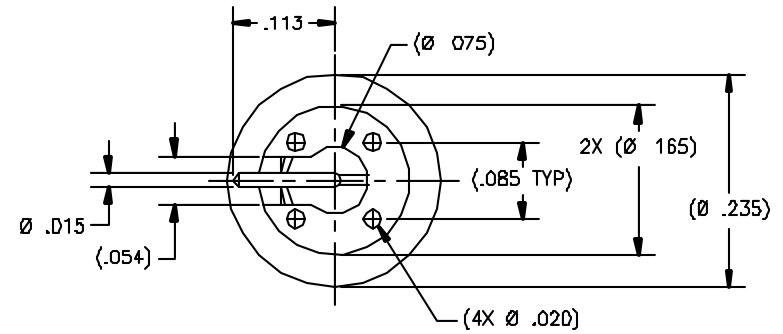
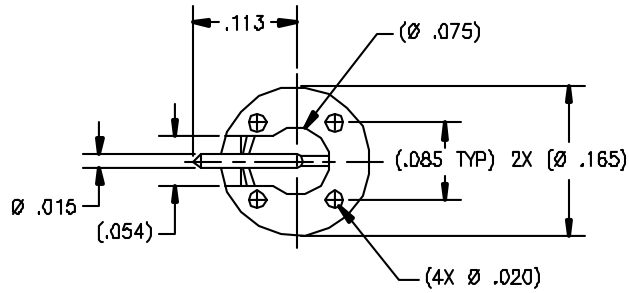


FIG. 2

B

B



A

A

SCALE	DIRECTORY / SUB-DIRECTORY	SHEET	OF	TOTAL
NONE	_OLP\	2	2	
SIZE	DATE	BOOK	DRAWING NO.	REV
C			P797	J