

## Datasheet

Item No. 59.199.0155.0

### Feed-through terminal RFK 1 / 240 K PA/V0

Feed-through DIN rail terminal block with screw connection for mounting on TS 32, nominal cross section 240 mm<sup>2</sup>, width 42 mm, color gray



Item No.	59.199.0155.0
EAN	4015573607811
order unit	10 Piece(s)

## Approvals



## Technical data

### General

Nominal cross section	240 mm <sup>2</sup>
Colour	Grey
Number of levels	1
Number of clamp positions per level	2
Width/grid dimension	42 mm
Insulating housing	PA666
Inflammability class of insulation material acc. with UL94	V0
Explosion-tested version "EEx e"	No
Mounting method	G-rail
Terminal blocks for electrical installations	No

### Technical data

Rated current	415 A
Rated voltage	1000 V
Rated impulse voltage	8 kV
Pollution degree	3
Closing plate required	No
Length	102 mm
Type of insulation material	Thermoplastic

**Connection Data**

Connection type 1	Screw connection
Connection type 2	Screw connection
Minimum cross section fine stranded	70 mm <sup>2</sup>
Maximum cross section fine stranded	240 mm <sup>2</sup>
Minimum cross section stranded	70 mm <sup>2</sup>
Maximum cross section stranded	240 mm <sup>2</sup>
Wire strip length	27 mm
Torque conductor mounting	14 Nm

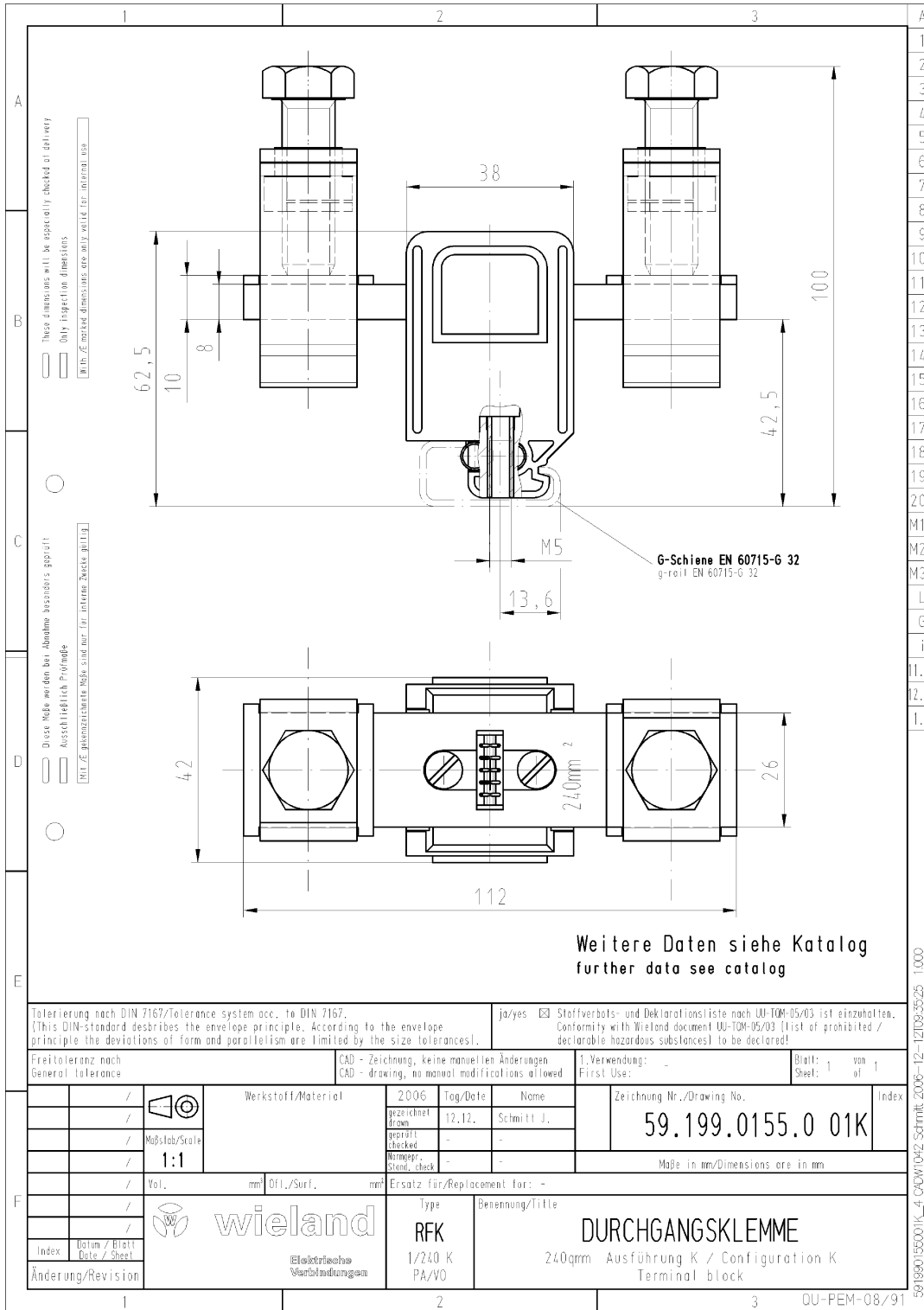
**Technical Data UL/CSA**

Cross section UL	0 AWG-500 kcmil
Voltage UL	600
Current factory wiring	375 A
Current field wiring	375 A
Cross section CSA	3/0 AWG-500 kcmil
Voltage CSA	600 V
Current CSA	425 A

**Accessories**

Item. No.	Typ:	Description:
07.201.8227.0	Jumper bar VB RFK 1 240 2	Cross connector for DIN rail terminal blocks type RFK..., 2 - pole
07.201.8327.0	Jumper bar VB RFK 1 240 3	Cross connector for DIN rail terminal blocks type RFK..., 3 - pole
07.201.8427.0	Jumper bar VB RFK 1 240 4	Cross connector for DIN rail terminal blocks type RFK..., 4 - pole
98.190.0000.0	Mounting rail G-32 EN60715 2000MM	Mounting rail G 32, unslotted, Höhe 5,5 mm, length 2 m, material steel. galv. zinc-plated and dichromated
98.190.1000.0	Mounting rail G-32 EN60715 2000MM	Mounting rail G 32, slotted, Höhe 15 mm, length 2 m, material steel. galv. zinc-plated and dichromated
98.210.0000.0	Mounting rail G-32 EN60715 2000MM	Mounting rail G 32, unslotted, Höhe 15 mm, length 2 m, material Aluminium
98.220.0000.0	Mounting rail G-32 EN60715 2000MM	Mounting rail G 32, unslotted, Höhe 15 mm, length 2 m, material E copper

Drawings



Tolerierung nach DIN 7167/Tolerance system acc. to DIN 7167. (This DIN-standard describes the envelope principle. According to the envelope principle the deviations of form and parallelism are limited by the size tolerances).		ja/yes <input checked="" type="checkbox"/> Stoffverbots- und Deklarationsliste nach UJ-TQM-05/03 ist einzuhalten. Conformity with Wieland document UJ-TQM-05/03 (list of prohibited / declarable hazardous substances) to be declared!	
Freitoleranz nach General tolerance		CAD - Zeichnung, keine manuellen Änderungen CAD - drawing, no manual modifications allowed	1. Verwendung: - First Use:
Blatt: 1 von 1 Sheet: 1 of 1		Zeichnung Nr./Drawing No. 59.199.0155.0 01K	
Werkstoff/Material		2006 bezeichnet drawn 12.12.	Name Schmitt J.
Maßstab/Scale 1:1		checked - -	
Vol.		Ersatz für/Replacement for: -	
wieland Elektrische Verbindungen		Type RFK 1/240 K PA/VO	Benennung/Title DURCHGANGSKLEMME 240qmm Ausführung K / Configuration K Terminal block
Index Änderung/Revision		Date / Sheet	

591990155001K\_4\_CADW1042\_Schmitt\_2006-12-12/08:35:25 1:000 DU-PEM-08/91