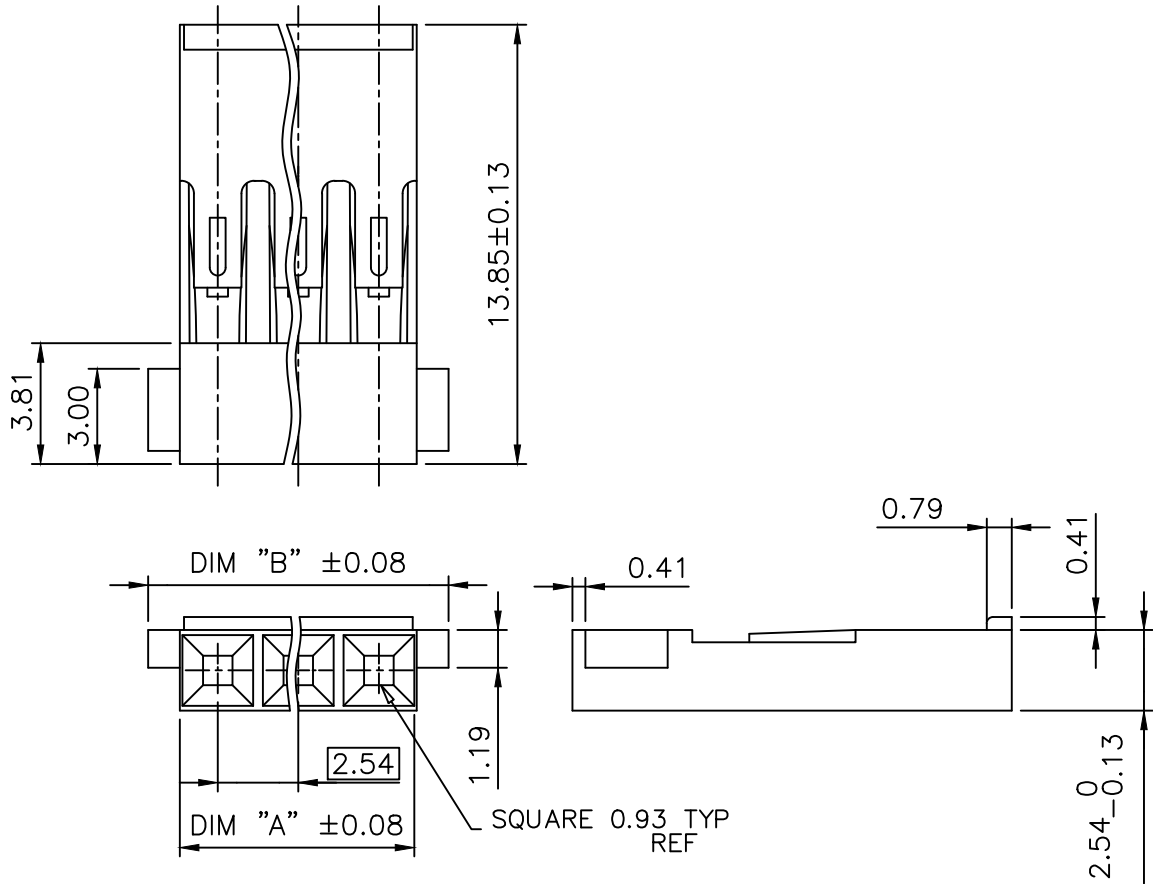


PRODUCT NUMBER	No. OF POS.	DIM "A"	DIM "B"
67954-001LF	1x02	4.93	6.93
67954-002LF	1x03	7.47	9.47
67954-003LF	1x04	10.01	12.01

EXTENDED RANGE

- TOOLING FEASIBILITY CONFIRMED
- SAMPLES ON DEMAND
- AVAILABILITY ON DEMAND



NOTES:

1. MOLDING MATERIAL: POLYAMID (PA 66), COLOR BLACK 25% GLASS FILLED, UL 94 V0
2. STANDARD PACKAGING IN POLYBAGS
3. TERMINALS MUST BE CRIMPED PROPERLY FOR SATISFACTORY LATCHING :
 - FOR CRIMPING INSTRUCTIONS, SEE TA-75
 - FOR TERMINAL APPLICATION SEE TA-531.
 PRODUCT SPECIFICATION: BUS-12-067.
4. THIS HOUSING IS INTENDED FOR USE WITH MINI PV TERMINAL WITH 22-36 GAUGE WIRE
5. PRODUCT MEETS EUROPEAN UNION DIRECTIVES AND OTHER COUNTRY REGULATIONS AS DESCRIBED IN GS-22-008.
6. THE PRODUCT IS NOT INTENDED TO BE EXPOSED TO A MANUFACTURING SOLDER PROCESS.
7. THIS PART SERIES IS NOT INITIALLY INTENDED FOR AUTOMOTIVE APPLICATIONS. ADDITIONAL FEES ARE CHARGEABLE FOR ANY ADDITIONAL QUALIFICATION AND TEST REPORTS PERFORMED OUTSIDE THE SCOPE OF THE STANDARD PRODUCT SPECIFICATIONS.
8. UNLESS OTHERWISE APPROVED BY AMPHENOL, ALL PARTS AND COMPONENTS ARE DESIGNED & BUILT ACCORDING TO AMPHENOL'S SPECIFICATIONS WHICH ARE SUBJECT TO CHANGE WITHOUT NOTICE.

mat'l. code		surface		tolerance		projection		product family	
SEE NOTES		ISO 1302		ISO 406 ISO 1101				BERCONN	
ltr	ecn no	dr	date	tolerances unless otherwise specified		mm		title	
H	v07-0532	HTB	07.08.16	angles	linear	.x ±0.3		MINI LATCH SR	
J	F11-0099	LMU	11.09.05			.xx ±0.13		POLARIZED HSG 2.54mm	
K	F-54542	DDE	25.02.07			.xxx ±0.05		scale 5:1	
				dr	L.MULIN	11.05.19		dwg no	
				enrg	L.MULIN	11.05.19		sheet 1 of 1	
				chr				size	
				appd	L.MULIN	11.05.19		A3	
sheet index		revision sheet				Amphenol FCI		type	
								CUSTOMER Drawing	