

# 750V DC Square Body Fuses

Size: 120

## Features/Benefits:

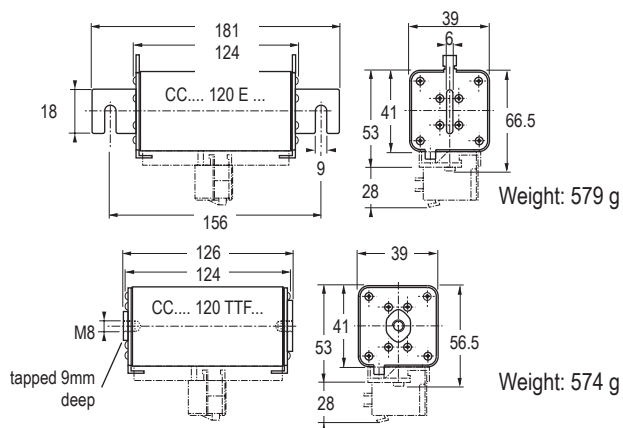
- Blown-fuse indicator
- Square ceramic body
- Full range D.C. operation
- Bladed and tapped versions standard

## Catalog Numbers, Ratings

Size	Current Rating $I_N$ (A)	Interrupting $I_N$ (A)	Maximum $I^2t$ @900V=L/R 40ms		Watts Loss		Catalog Number	Ref. No.
			$I_p=10I_N$	$I_p=50I_N$	$0.8 I_N$	$I_N$		
120	50	@ 750V= 100kA L/R = 100ms	4.4	8.1	4.4	8.1	CC 7,5 gRC 120 EF 0050	Y084776
	63		5.7	10.4	5.7	10.4	CC 7,5 gRC 120 EF 0063	R085207
	80		7.3	13.4	7.3	13.4	CC 7,5 gRC 120 EF 0080	Q085206
	100		9.1	16.7	9.1	16.7	CC 7,5 gRC 120 EF 0100	P085205
	125		11.5	21	11.5	21	CC 7,5 gRC 120 EF 0125	R086242
	160		15	27	15	27	CC 7,5 gRC 120 EF 0160	N085204
	50	@ 900 V= 100kA L/R = 40ms	4.4	8.1	4.4	8.1	CC 7,5 gRC 120 TTF 0050	B220824
	63		5.7	10.4	5.7	10.4	CC 7,5 gRC 120 TTF 0063	Q082400
	80		7.3	13.4	7.3	13.4	CC 7,5 gRC 120 TTF 0080	Z090435
	100		9.1	16.7	9.1	16.7	CC 7,5 gRC 120 TTF 0100	R082401
	125		11.5	21	11.5	21	CC 7,5 gRC 120 TTF 0125	P085251
	160		15	27	15	27	CC 7,5 gRC 120 TTF 0160	R085253

Microswitch: MC 3E 1-5N Ref. Number: D310020  
Contact factory for holder

## Dimensions



## Ratings:

**Volts** : 750VDC  
: 900VDC  
**Amps** : 50 to 160A  
**IR** : 100kA I.R. DC  
**L/R** : 100mSec (750)  
**L/R** : 40mSec (900)