

gl-gG, aM Cylindrical Fuse-Links

Domestic and industrial cylindrical fuse-links

Mersen gl-gG and aM fuse-links cover a wide range of physical sizes and ampere ratings for 400, 500, and 690 volts AC. gl-gG and aM fuse-links are for industrial applications. Most ratings are available with an optional indicator. All industrial fuse-links have the option of a built-in striker. All cylindrical fuse-links have ceramic bodies and silver-plated ferrules.

gl-gG

Full Range Protection

- 4 physical sizes from 8 x 31mm to 22 x 58 mm
- 400, 500 and 690 Volt ratings - 0.5A through 125A
- Most ratings available with indicator
- Meet IEC, NFC and UNE standards
- Approved by Lloyds Register of Shipping and Bureau Veritas

aM

Short Circuit Protection

- 4 physical sizes from 8 x 31mm to 22 x 58mm
- 400, 500 and 690 Volt ratings - 16A through 125A
- Most ratings available with indicator
- Meet IEC, NFC and UNE standards
- Approved by Lloyds Register of Shipping and Bureau Veritas

gl-gG

Full Range Protection Fuse-links with Striker

- 2 sizes-14 x 51mm and 22 x 58mm
- 400, 500 and 690 Volt ratings - 4A through 125A
- All ratings include striker
- Meet IEC, NFC and UNE standards
- Approved by Lloyds Register of Shipping and Bureau Veritas

aM

Short Circuit Protection Fuse-links with Striker

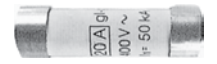
- 2 sizes - 14 x 51mm and 22 x 58mm
- 400, 500 and 690 Volt ratings - 2A through 125A
- All ratings include striker
- Meet IEC, NFC and UNE standards
- Approved by Lloyds Register of Shipping and Bureau Veritas



gl-gG Cylindrical Fuse-Links

Catalog Numbers, Ratings – gl-gG (Optional Blown-Fuse Indicator)

Size (mm x mm)	Rated In Current (A)	Rated Voltage	w/o indicator			w Indicator			Interrupting Rating (A)	Standard Pack/Ctn				
			Catalog No.	New Ref. No.	New Cat. No.	Catalog No.	New Ref. No.	New Cat. No.						
8x31	0.5	400V	15009-G	P218191	FR8GG40V0.5				20,000	10/100				
	1		15011-G	C218709	FR8GG40V1									
	2		15013-G	Q219227	FR8GG40V2	15213-G	B222204	FR8GG40V2I						
	4		15019-G	W222958	FR8GG40V4	15219-G	X222959	FR8GG40V4I						
	6		15023-G	A211025	FR8GG40V6	15223-G	V201291	FR8GG40V6I						
	8		15027-G	B213096	FR8GG40V8	15227-G	B211026	FR8GG40V8I						
	10		15031-G	A214613	FR8GG40V10	15231-G	A212060	FR8GG40V10I						
	12		15033-G	R216146	FR8GG40V12	15233-G	C213097	FR8GG40V12I						
	16		15035-G	P216650	FR8GG40V16	15235-G	Y214105	FR8GG40V16I						
	20		15037-G	F217677	FR8GG40V20	15237-G	J215127	FR8GG40V20I						
25	15039-G	D218710	FR8GG40V25	15239-G	S216147	FR8GG40V25I								
10x38	0.5	500V	16009-G	C211027	FR10GG50V0.5				120,000	10/100				
	1		16011-G	B212061	FR10GG50V1									
	2		16013-G	D213098	FR10GG50V2	16213-G	S216653	FR10GG50V2I						
	4		16019-G	X213598	FR10GG50V4	16219-G	E217170	FR10GG50V4I						
	6		16023-G	K215128	FR10GG50V6	16223-G	T218195	FR10GG50V6I						
	8		16027-G	D217169	FR10GG50V8	16227-G	V219231	FR10GG50V8I						
	10		16031-G	S218194	FR10GG50V10	16231-G	E222207	FR10GG50V10I						
	12		16033-G	W219761	FR10GG50V12	16233-G	H200751	FR10GG50V12I						
	16		16035-G	G200750	FR10GG50V16	16235-G	H201809	FR10GG50V16I						
	20		16037-G	D211028	FR10GG50V20	16237-G	X211551	FR10GG50V20I						
	25		16039-G	E213099	FR10GG50V25	16239-G	W212585	FR10GG50V25I						
	32		16043-G	A214107	FR10GG40V32	16243-G	Z213600	FR10GG40V32I						
	14x51		1	690V	17011-G	K218716	FR14GG69V1						80,000	10/50
			2		17013-G	Y219234	FR14GG69V2							
4		17019-G	A219765		FR14GG69V4									
6		17023-G	H222210		FR14GG69V6									
8		17027-G	D222965		FR14GG69V8									
10		17031-G	L200754		FR14GG69V10									
12		17033-G	L201812		FR14GG69V12									
16		17035-G	A211554		FR14GG69V16									
20		17037-G	Z212588		FR14GG69V20									
25		17039-G	C213603		FR14GG69V25									
32		17043-G	W216656		FR14GG50V32									
40		17047-G	X218198		FR14GG50V40									
50		17051-G	Z219235		FR14GG50V50									
22x58		2	690V		18013-G	F219241	FR22GG69V2				80,000	10/50		
	4	18019-G		H219772	FR22GG69V4									
	6	18023-G		P222216	FR22GG69V6									
	8	18027-G		L222972	FR22GG69V8									
	10	18031-G		T200761	FR22GG69V10									
	12	18033-G		J201304	FR22GG69V12									
	16	18035-G		S201818	FR22GG69V16									
	20	18037-G		P211038	FR22GG69V20									
	25	18039-G		N212072	FR22GG69V25									
	32	18043-G		F212594	FR22GG69V32									
	40	18047-G		J213609	FR22GG69V40									
	50	18051-G		P214626	FR22GG69V50									
	63	18055-G		Y215646	FR22GG69V63									
	80	18059-G		Q217180	FR22GG69V80									
	100	18063-G		E218205	FR22GG50V100									
	125	18065-G		J219773	FR22GG50V125									



FR8GG40V20



FR10GG50V20



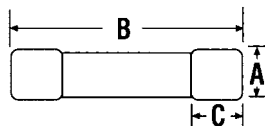
FR14GG69V25



FR22GG69V80

Dimensions (mm)

Fuse Size	A	B	C
8 x 31	8.5	31.5	6.3
10 x 38	10.3	38	10.5
14 x 51	14.3	51	13.8
22 x 58	22.2	58	16.2



gl-gG Cylindrical Fuse-Links

Catalog Numbers, Ratings – gl-gG with Striker

Size (mm x mm)	Rated In Current (A)	Rated Voltage	Catalog Number	New Reference No.	New Catalog No.	Interrupting Rating (A)	Standard Pack/Ctn
14x51	2	500V	17413-G	J211033	FR14GG50V2P	120,000	10/50
	4		17419-G	H212067	FR14GG50V4P		
	6		17423-G	G214113	FR14GG50V6P		
	8		17427-G	R215134	FR14GG50V8P		
	10		17431-G	Z216153	FR14GG50V10P		
	12		17433-G	L217176	FR14GG50V12P		
	16		17435-G	Z218200	FR14GG50V16P		
	20		17437-G	B219237	FR14GG50V20P		
	25		17439-G	L222213	FR14GG50V25P		
	32		17443-G	P200757	FR14GG50V32P		
	40		17447-G	P201815	FR14GG50V40P		
	50		17451-G	D211557	FR14GG50V50P		
22x58	4	690V	18419-G	R214628	FR22GG69V4P	80,000	10x50
	6		18423-G	A215648	FR22GG69V6P		
	8		18427-G	F216665	FR22GG69V8P		
	10		18431-G	W217691	FR22GG69V10P		
	12		18433-G	W218726	FR22GG69V12P		
	16		18435-G	L219775	FR22GG69V16P		
	20		18437-G	P222975	FR22GG69V20P		
	25		18439-G	M201307	FR22GG69V25P		
	32		18443-G	S211041	FR22GG69V32P		
	40		18447-G	R212075	FR22GG69V40P		
	50		18451-G	M213612	FR22GG69V50P		
	63		18455-G	S214629	FR22GG50V63P		
	80	18459-G	F216159	FR22GG50V80P			
	100	18463-G	T217183	FR22GG50V100P			
	125	18465-G	H218208	FR22GG50V125P			



FR14GG50V40P



FR22GG69V40P

Striker



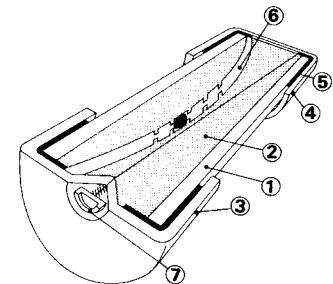
Before



After

Fuse Construction

- 1 Ceramic body
- 2 Sand
- 3 Indicator contact
- 4 Lower contact
- 5 Contact ring
- 6 Melting element
- 7 Indicator



Dimensions (mm)

Fuse Size	A	B	C	D	E
14 x 51	14.3	51	13.8	7.5	3.8
22 x 58	22.2	58	16.2	7.5	3.8

