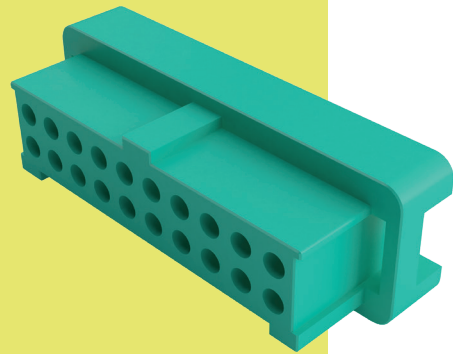


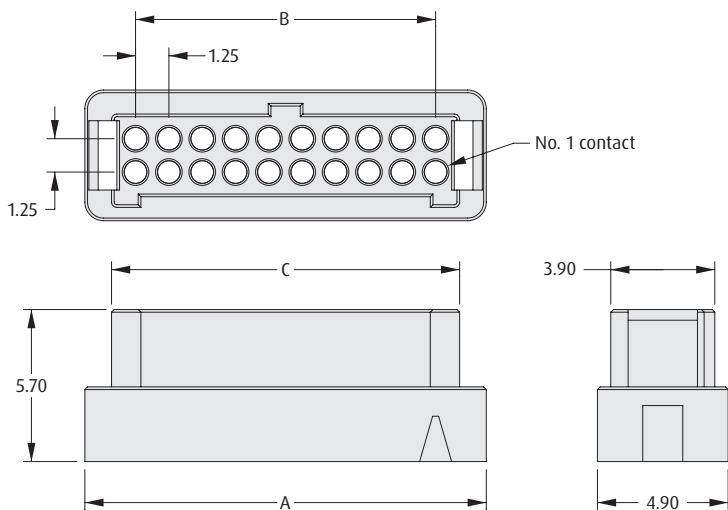
Gecko with Latches Connectors

Female Crimp Housings

- ❖ Features potting wall for extra security.
- ❖ No. 1 position identified on moulding.
- ❖ Withstands extremes of temperature: -65°C to +150°C.
- ❖ 3 polarising points on each housing prevent mis-mating.



FEMALE



CALCULATION

A	$B + 3.8$
B	$0.625 \times (\text{Total No. of contacts} - 2)$
C	$B + 1.8$

TOOLS

Recommended Crimp Tool - Z125-900

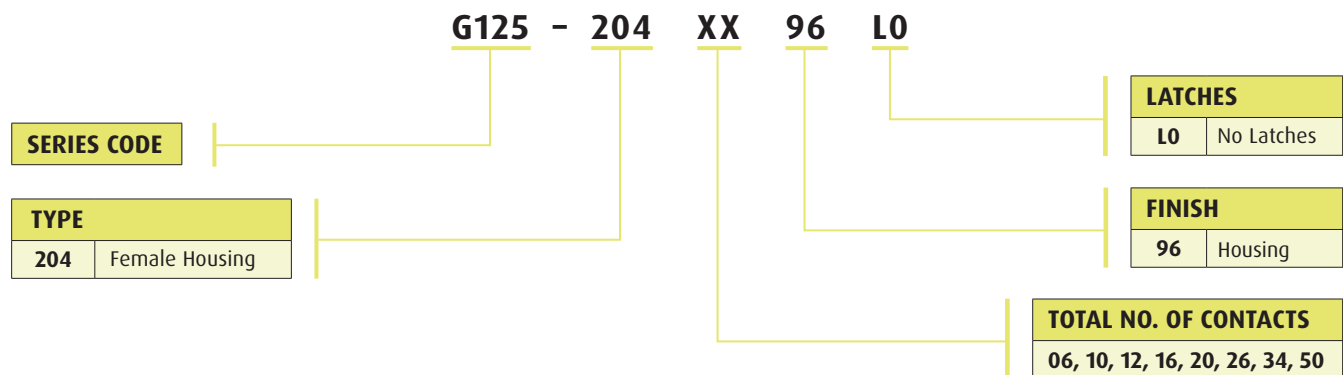
Positioner - Z125-901

Contact Insertion/Removal Tool - Z125-902

❖ Female contacts shown on following pages.

❖ Instruction sheets available at www.harwin.com/instructions.

HOW TO ORDER



All dimensions in mm.

Patent Published