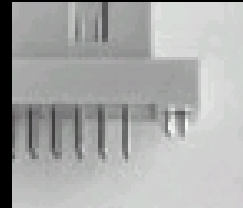


The HI-CON™ product line is a full line of DIN 41612 connectors.

- ? 2, 3, and 4 row connectors with 16 to 128 contacts available in .100" contact spacing.
- ? Standard and Inverse DIN connectors available.
- ? Available in solder tail, pressfit, and IDC termination styles.
- ? High power (Type D and E) and mixed signal (Type M) DIN connectors available to accommodate up to 40 Amps of current (contact factory for more information).
- ? Complete line of accessories including: shrouds, housings, custom polarizing keys and related items.



[Request Literature](#)



[Request Samples](#)

Check out

Connectors (DIN 41612) Part numbering systems

Series	100 - 064 - 0	5	3	
Type B, 1/2B, C, 1/2C, or D	100			1 13.00 mm Tail Length
Type M	105			2 4.0 mm
Type C + 1 (4 row DIN)	106			3 2.9 mm
IDC DIN, Type B or C	120			7 22.0 mm
Type Q, 1/2 Q, R, or 1/2 R (inverse)	130			9 17.0 mm
				DIN performance level
		5		performance level 3
		3		performance level 2
Contact arrangement/ No. of contacts		0		aligned pins Male Connector
Type D, 32 contacts	032	1		straight pins
Type B, 64 contacts	064	2		angled press pins
Type C, 64 contacts	964	3		straight fit pins
Type C, 96 contacts	096			Female connector
Type C + 1, 128 contacts	128	4		straight tail
Type 1/2 C or 1/2 R, 48 contacts	348	5		angled tail
Type 1/2 B or 1/2 Q, 32 contacts	632	9		straight press fit tail

HI-CON™ Data Sheets

HI-CON DIN Connector Technical data	Type C + 1 Male & Female Connectors
Type 1/2B Male & Female Connectors	Type Q Male & Female Connectors
Type 1/2C Male and Female Connectors	Type 1/2R Male & Female Connectors
Type B Male & Female Connectors	Type R Male & Female Connectors
Type C Male & Female Connectors	DIN Accessories
Type D Male & Female Connectors	120 Series Type 1/2 C Male & Female IDC Connectors
Type E Male & Female Connectors	120 Series Type B Male & Female IDC Connectors
Type F Male & Female Connectors	120 Series Type C Male & Female IDC Connectors
Type M Male & Female Connectors	120 Series Tooling & Accessories