



## | P528

Pressure Sensor

### Description

The P528 incorporates Kavlico's 4th generation ceramic capacitive sense element with the latest state of the art proprietary ASIC. Available in brass or stainless steel housings, this multi-purpose sensor is rugged by design. Highly reliable, the P528 is ideal for measuring a broad range of process media including hydrocarbon based fluids, air, and gases. The P528 package has a built-in Metri-Pack 150 series sealed electrical connector and is available with popular pressure connection thread options. The sensor is offered with seal materials suitable for diverse applications. Standard pressure ranges are available in PSI or Bar.



### Features

- Small Size (3/4" Hex)
- External Hex for Easy Installation
- Linear Amplified Output
- Temperature Compensated
- Superior Long-Term Stability
- Low Power Consumption
- Minimum Life Expectancy: Ten Million Cycles

### Applications

- Compressors
- Process Controls
- Instruments & Test Equipment
- Sterilizers
- Air Pressure
- Oil & Fuel Pressure
- Coolant Pressure
- Agricultural Equipment
- CNG & Natural Gas Engines



### MAIN FEATURES

<b>Pressure Ranges</b>	0 - 6 up to 0 - 70 Bar and 0 - 100 up to 0 - 1000 PSI
<b>Electrical Connection</b>	Packard Electric Metri-Pack 150 Series
<b>Pressure Connection</b>	1/4" SAE Female Flare w/ Schrader Deflator 7/16"-20 UNF-2A external threads 1/4"-18 NPT 1/8"-27 NPT (external threads)
<b>Housing Material</b>	Brass (up to 300 psi) and stainless steel (above 300 psi)
<b>Output Voltage</b>	0.5 to 4.5 Vdc

## Pressure Ranges

<b>Bar A, S or G</b>	0 - 1	0 - 1.6	0 - 2.5	0 - 4	0 - 6	0 - 10	0 - 16	0 - 25	0 - 40	0 - 50	0 - 70	
<b>PSI A, S or G</b>	0 - 15	0 - 20	0 - 30	0 - 50	0 - 75	0 - 100	0 - 150	0 - 200	0 - 300	0 - 500	0 - 750	0 - 1000

For custom pressure ranges consult Kavlico Pressure Sensors.

## Physical

<b>Durability/Service Life</b>	10 million full pressure cycles (minimum)
<b>Proof Pressure</b>	3X FS Pressure (upto 14 Bar / 200 PSI) 2X FS Pressure (above 14 Bar / 200 PSI)
<b>Burst Pressure</b>	1500 PSI (upto 24 Bar / 300 PSI) 2500 PSI (above 24 Bar / 300 PSI)
<b>Humidity</b>	93 +/- 3% RH
<b>Vibration</b>	10 g's peak to peak sine (10 - 2000 Hz)
<b>Shock</b>	75 g's, 1/2 Sine Wave
<b>Drop Test</b>	1 meter drop on concrete as per SAE J1455
<b>Weight</b>	< 50 gm
<b>Ingress Protection</b>	IP67

## Performance

<b>Linearity Error</b>	≤ +/- 0.5% of span
<b>Total Error Band</b>	+/- 1.5% of span (0 ≤ T ≤ 85 C°) +/- 2.0% of span (T < 0 C°, T < 85 C°)
<b>Stability Coefficient</b>	+/- 0.3 % of Full span over 1 year
<b>Operating Temperature</b>	-40 C° to 125 C° (Seal material dependent. See Ordering Options)
<b>Storage Temperature</b>	-40 C° to 125 C° (Seal material dependent. See Ordering Options)

## Electrical

<b>Supply Voltage</b>	5.0 Vdc +/- 0.5
<b>Output Voltage</b>	0.5 to 4.5 Vdc
<b>Supply Current</b>	≤ 5 mA
<b>Output Impedance</b>	≤ 100 Ω
<b>Output load</b>	≥ 10 KΩ
<b>Output response time</b>	≤ 2 ms to 63 % of final output voltage with step change in input pressure
<b>Overvoltage protection</b>	36 Vdc
<b>Reverse Voltage</b>	-36 Vdc
<b>Short Circuit protected</b>	Output to supply, Output to Ground: Indefinite
<b>Isolation Voltage</b>	R ≥ 100 MΩ, 500 Vdc / 1 min
<b>Warmup time</b>	3 mSec Max.
<b>EMC</b>	Meets ISO 7637-3, ISO 11452-4, ISO 11452-2, CISPR 25, MIL-STD 461 E
<b>ESD</b>	IEC 1000-4.2 (8kV contact, 15kV air), ISO 10605 (8kV contact, 25kV air)

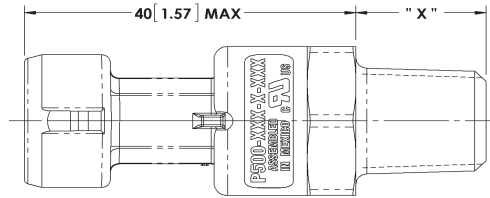
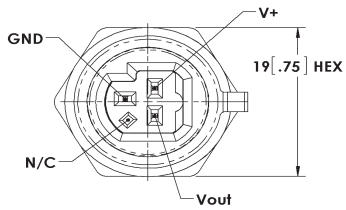
OBSOLETE



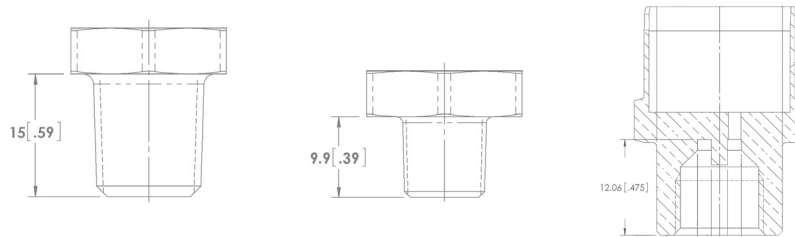
# DIMENSIONS

Dimensions in mm [Inch]

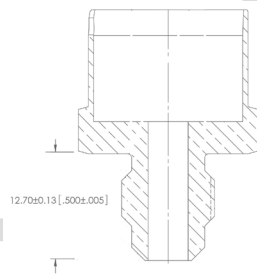
## Pressure Sensor with Electrical Connection



## Pressure Connections and Recommended Installation Torque



<b>Name</b>	1/4 - 18 NPT	1/8 - 27 NPT	Schrader deflator
<b>Thread</b>	External	External	Internal
<b>Torque</b>	25 Nm	14 Nm	15 Nm



<b>Name</b>	7/16 – 20 UNF 2A
<b>Thread</b>	External
<b>Torque</b>	16 Nm

Note: Recommended torque may vary according to material and specific application.



P528 Sensor, 0 - 16 Bar Absolute, Fluorosilicone Seal Material, 1/4 - 18 NPT Pressure Connection,

P528 - 16B - A - C 1 A

Family

P528

Pressure Ranges

0 – 6 Bar	0 – 100 PSI	0 – 1000 PSI
0 – 16 Bar	0 – 150 PSI	
0 – 25 Bar	0 – 300 PSI	
0 – 40 Bar	0 – 400 PSI	
0 – 50 Bar	0 – 500 PSI	
0 – 70 Bar	0 – 600 PSI	
	0 – 750 PSI	

Reference

- A: Absolute
- G: Gage
- S: Sealed Gage (Referenced to 14.7 PSIA)

Seal Material

- C: Neoprene (-30° to 120°C)
- F: Ethylene Propylene (-40° to 120°C)
- H: HNBR (-20° to 125°C)

Pressure Connection (Port)

- 1: 1/4 - 18 NPT (External Threads)
- 2: 1/4 SAE Female flare w/schrader deflator
- 3: 7/16 - 20 UNF 2A (External threads)
- 4: 1/8 - 27 NPT (External threads)

Built-in Electrical Connection

- A: With Mating Connector, w/12", 18 AWG Leads
- C: Without Mating Connector

OBSOLETE



## AGENCY APPROVALS & CERTIFICATIONS



EN 61326-1, 2006  
IEC 61000-4-2, 2001  
IEC 61000-4-3, 2006  
IEC 61000-4-8, 2001



2002/95/EC RoHS Directive



File # SA10552

OB SOLETT E

Datasheets provided by Sensata Technologies, Inc., its subsidiaries and/or affiliates ("Sensata") are solely intended to assist third parties ("Buyers") who are developing systems that incorporate Sensata products (also referred to herein as "components"). Buyer understands and agrees that Buyer remains responsible for using its independent analysis, valuation, and judgment in designing Buyer's systems and products. Sensata datasheets have been created using standard laboratory conditions and engineering practices. Sensata has not conducted any testing other than that specifically described in the published documentation for a particular datasheet. Sensata may make corrections, enhancements, improvements, and other changes to its datasheets or components without notice.

Buyers are authorized to use Sensata datasheets with the Sensata component(s) identified in each particular datasheet. HOWEVER, NO OTHER LICENSE, EXPRESS OR IMPLIED, BY ESTOPPEL OR OTHERWISE TO ANY OTHER SENSATA INTELLECTUAL PROPERTY RIGHT, AND NO LICENSE TO ANY THIRD PARTY TECHNOLOGY OR INTELLECTUAL PROPERTY RIGHT, IS GRANTED HEREIN. SENSATA DATASHEETS ARE PROVIDED "AS IS". SENSATA MAKES NO WARRANTIES OR REPRESENTATIONS WITH REGARD TO THE DATASHEETS OR USE OF THE DATASHEETS, EXPRESS, IMPLIED, OR STATUTORY, INCLUDING ACCURACY OR COMPLETENESS. SENSATA DISCLAIMS ANY WARRANTY OF TITLE AND ANY IMPLIED WARRANTIES OF MERCHANTABILITY, FITNESS FOR A PARTICULAR PURPOSE, QUIET ENJOYMENT, QUIET POSSESSION, AND NON-INFRINGEMENT OF ANY THIRD PARTY INTELLECTUAL PROPERTY RIGHTS WITH REGARD TO SENSATA DATASHEETS OR USE THEREOF.

All products are sold subject to Sensata's terms and conditions of sale supplied at [www.sensata.com](http://www.sensata.com) SENSATA ASSUMES NO LIABILITY FOR APPLICATIONS ASSISTANCE OR THE DESIGN OF BUYERS' PRODUCTS. BUYER ACKNOWLEDGES AND AGREES THAT IT IS SOLELY RESPONSIBLE FOR COMPLIANCE WITH ALL LEGAL, REGULATORY, AND SAFETY-RELATED REQUIREMENTS CONCERNING ITS PRODUCTS, AND ANY USE OF SENSATA COMPONENTS IN ITS APPLICATIONS, NOTWITHSTANDING ANY APPLICATIONS-RELATED INFORMATION OR SUPPORT THAT MAY BE PROVIDED BY SENSATA.

Mailing Address: Sensata Technologies, Inc., 529 Pleasant Street, Attleboro, MA 02703, USA.

### CONTACT US

#### Americas

+1 (800) 350 2727  
[sensors@sensata.com](mailto:sensors@sensata.com)  
[switches@sensata.com](mailto:switches@sensata.com)

#### Europe, Middle East & Africa

+359 (2) 809 1826  
[pressure-info.eu@sensata.com](mailto:pressure-info.eu@sensata.com)

#### Asia Pacific

[sales.isasia@list.sensata.com](mailto:sales.isasia@list.sensata.com)  
China +86 (21) 2306 1500  
Japan +81 (45) 277 7117  
Korea +82 (31) 601 2004  
India +91 (80) 67920890  
Rest of Asia +886 (2) 27602006  
ext 2808