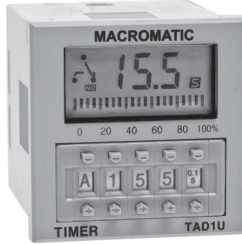


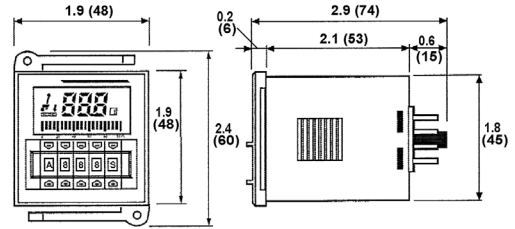
TIME DELAY RELAYS

TAD SERIES

DIGITAL-SET MULTI-FUNCTION MULTI-RANGE 1/16 DIN MOUNTING



All dimensions are
IN (mm)



- ◆ Push-button thumbwheels for digital-setting of time delay & selection of function
- ◆ 10 field-selectable functions in one unit
- ◆ 10ms to 9,990 Hours programmable timing range
- ◆ Universal 24-240V AC/DC input voltage
- ◆ LCD display
- ◆ Panel, track or surface mounting
- ◆ 1/16 DIN style case (comes with panel-mounting adapter)
- ◆ 5A SPDT output contacts



MULTI-FUNCTION	INPUT VOLTAGE	PRODUCT NUMBER	WIRING/SOCKETS
10 FIELD-SELECTABLE FUNCTIONS◆	24-240V AC 50/60Hz & 24-240V DC	TAD1U	SEE DIAGRAMS ON PAGE 75 8 Pin Octal (See Below)

- ◆ Functions Include: On Delay (2 Versions), Interval, Flasher (2 Versions), Delayed Interval/Pulse, Off Delay, On/Off Delay, Single Shot & Accumulative On Delay (see Page 75 for additional details)

■ See below for **Sockets & Accessories**.

APPLICATION DATA

Voltage Tolerance:

±10% of rated voltage

Load (Burden):

Less than 2.5 VA

Repeat Accuracy:

±0.01%, ±0.05 seconds (includes variation due to voltage and temperature changes)

Recycle Time:

0.2 seconds maximum

Temperature:

-10° to 55°C (14° to 131°F)

LCD Display:

Shows time remaining in both digit & bar graph form--also shows relay status & time base. In addition, a switch on the bottom of the unit allows choice of timing up or timing down display.

Output Contacts:

5A SPDT Resistive @ 250V AC

Life:

Mechanical: 10,000,000 operations
Full Load: 100,000 operations

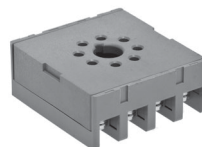
Approvals:



SOCKETS & ACCESSORIES

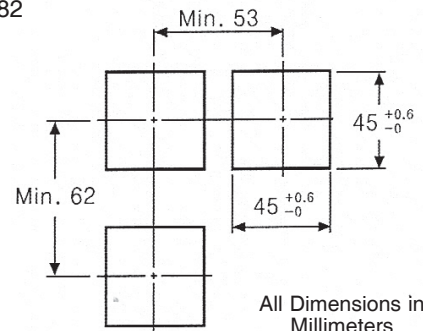
DESCRIPTION	PRODUCT NUMBER
8 Pin Octal Socket	70169-D■
8 Pin Octal Socket (Back Mounting)	SR6P-M08G
Panel-Mounting Adaptor	Included

- For Surface or Track Mounting--See Pages 81 & 82 for additional information



SR6P-M08G

PANEL CUTOUT



All Dimensions in
Millimeters

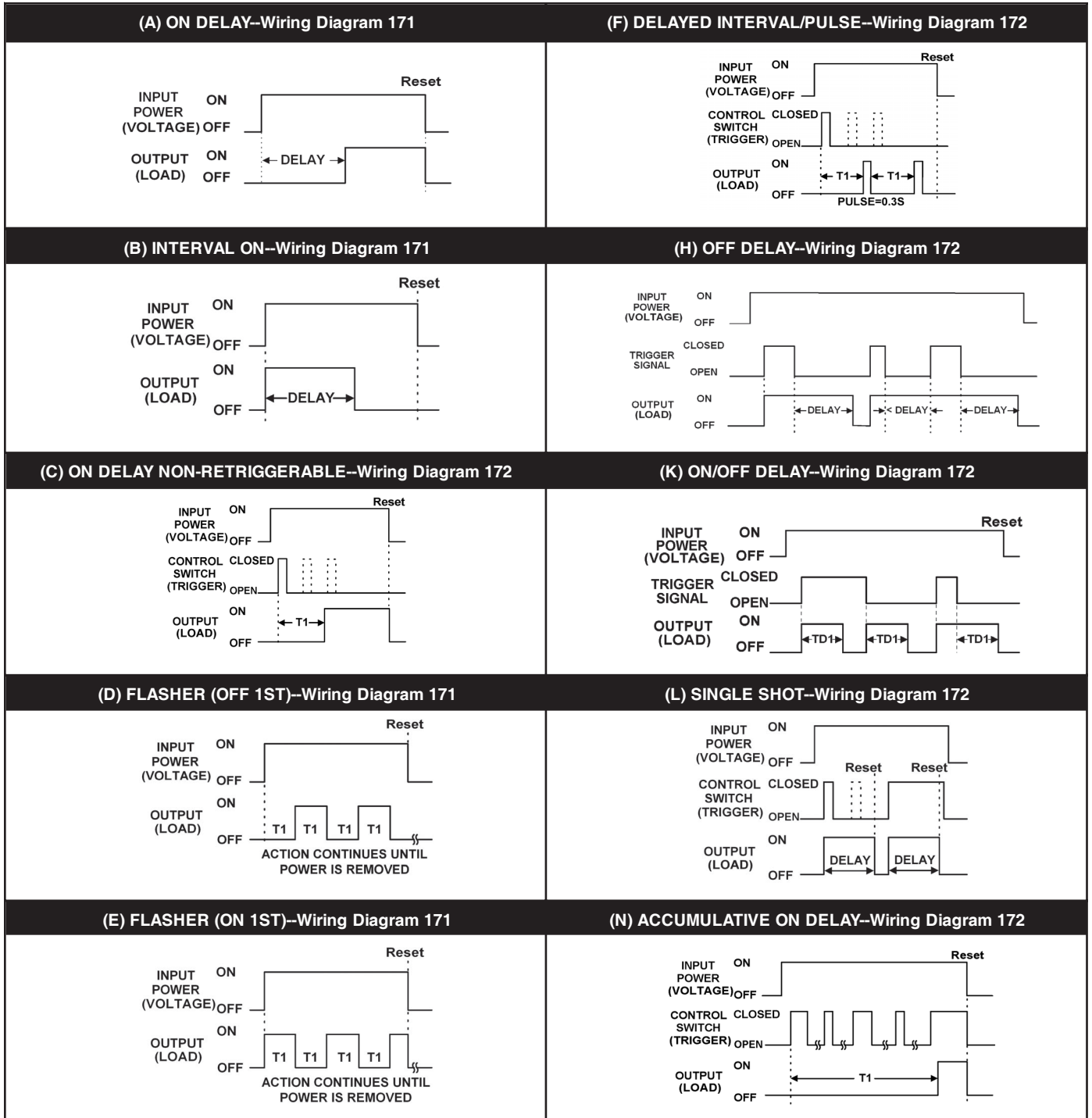


800-238-7474

www.macromatic.com
sales@macromatic.com

TIME DELAY RELAYS

TAD SERIES DIGITAL-SET MULTI-FUNCTION MULTI-RANGE DEFINITION OF TIMING FUNCTIONS



In addition to using the Trigger or Control Switch, some functions may also use a Reset and/or Inhibit switch--please contact Macromatic for additional information.

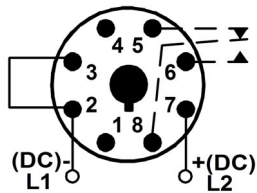


DIAGRAM 171

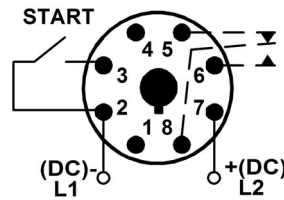
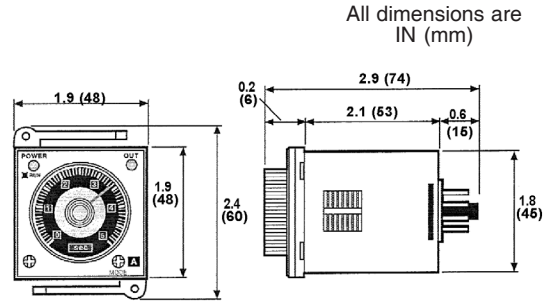


DIAGRAM 172

TIME DELAY RELAYS

TAA SERIES ANALOG-SET MULTI-FUNCTION MULTI-RANGE 1/16 DIN MOUNTING



All dimensions are IN (mm)

- ◆ 6 field-selectable functions in one unit
- ◆ Large dial for setting of time delay
- ◆ 50ms to 100 Hours programmable timing range
- ◆ Universal 24-240V AC/DC input voltage
- ◆ Panel, track or surface mounting
- ◆ 1/16 DIN style case (comes with panel-mounting adapter)
- ◆ 3A DPDT output contacts



MULTI-FUNCTION◆	INPUT VOLTAGE	PRODUCT NUMBER	WIRING/SOCKETS■
Includes: On Delay, Delayed Interval/Pulse, On Delay-Timed & Instantaneous, Flasher (OFF 1st), Flasher (ON 1st) & Interval On-Timed & Instantaneous	24-240V AC 50/60Hz & 24-240V DC	TAA1U	SEE DIAGRAMS ON PAGE 77 8 Pin Octal (See Below)
Includes: On Delay-Triggered, Off Delay, On/Off Delay, Flasher (OFF 1st)-Triggered, Flasher (ON 1st)-Triggered & Watchdog	24-240V AC 50/60Hz & 24-240V DC	TAA2U	SEE DIAGRAMS ON PAGE 77 11 Pin Octal (See Below)

- See below for **Sockets & Accessories**.
- ◆ See Page 77 for additional details.

APPLICATION DATA

Voltage Tolerance:
±10% of rated voltage.

Load (Burden):
Less than 2.5 VA

Repeat Accuracy:
±0.01%, ±0.05 seconds (includes variation due to voltage and temperature changes).

Recycle Time:
0.2 seconds maximum.

Temperature:
-10° to 55°C (14° to 131°F)

LED Indicators: One red LED indicates Input Voltage/Timing (flashing) & a second red LED indicates relay status.

Output Contacts:
3A DPDT Resistive @ 250V AC

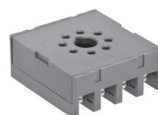
Life:
Mechanical: 10,000,000 operations
Full Load: 100,000 operations

Approvals:
File #E170213

SOCKETS & ACCESSORIES

DESCRIPTION	PRODUCT NUMBER
8 Pin Octal Socket	70169-D■
8 Pin Octal Socket (Back Mounting)	SR6P-M08G
11 Pin Octal Socket	70170-D■
11 Pin Octal Socket (Back Mounting)	SR6P-M11G
Panel-Mounting Adaptor	Included

■ For Surface or Track Mounting--See Pages 81 & 82 for additional information

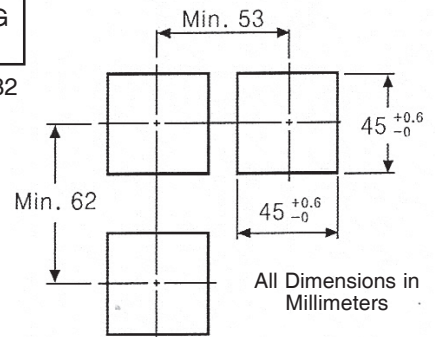


SR6P-M08G



SR6P-M11G

PANEL CUTOUT



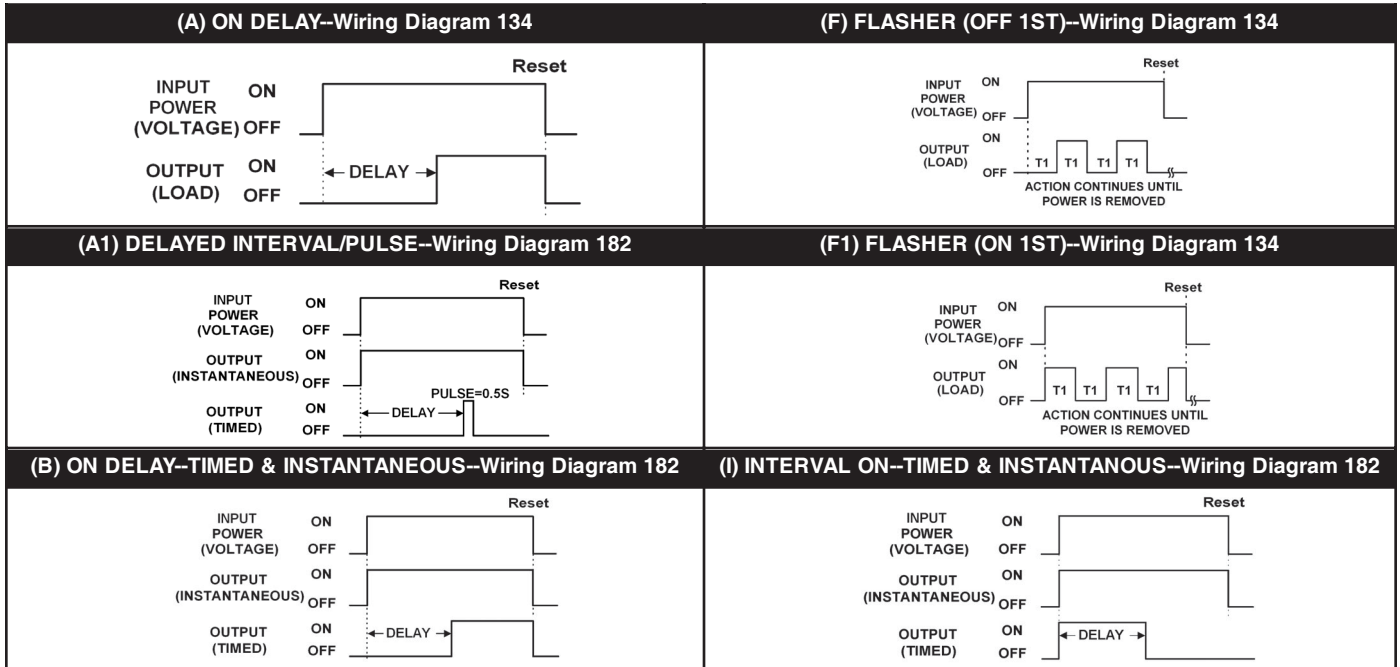
800-238-7474

www.macromatic.com
sales@macromatic.com

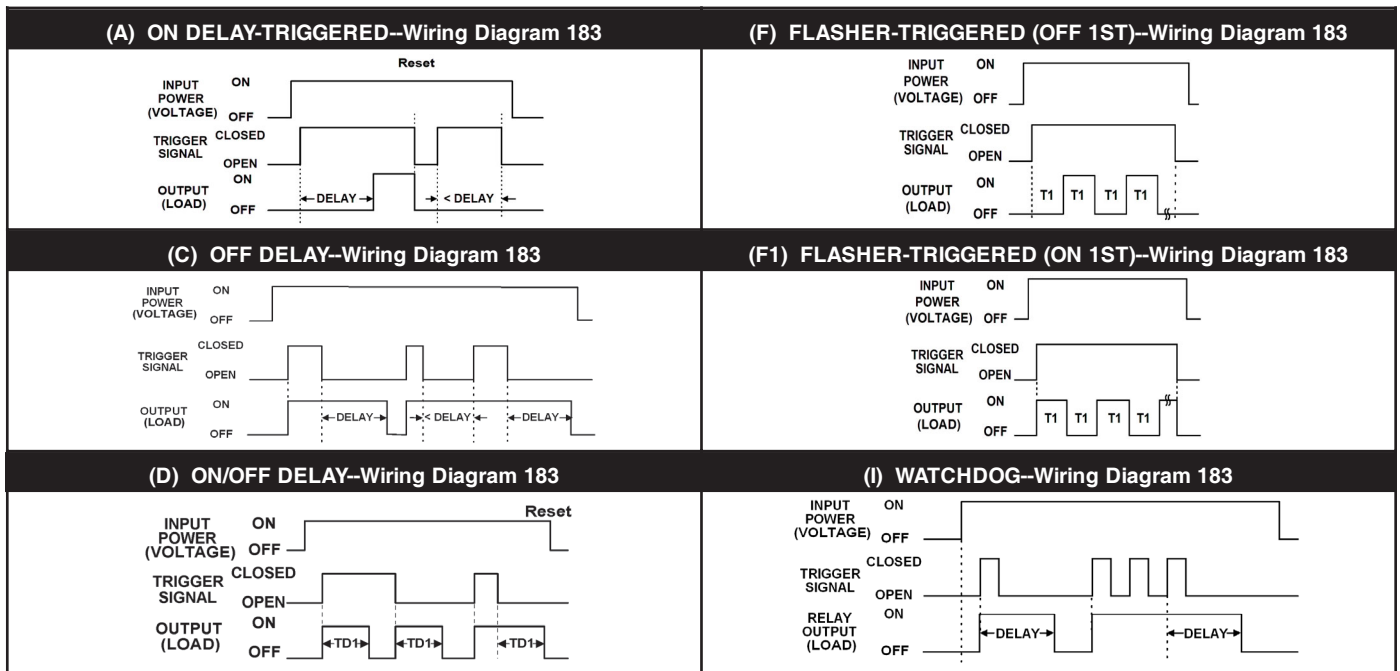
TIME DELAY RELAYS

TAA SERIES ANALOG-SET MULTI-FUNCTION MULTI-RANGE DEFINITION OF TIMING FUNCTIONS

TAA1U



TAA2U



In addition to using the Trigger or Control Switch, some functions may also use a Reset and/or Inhibit switch--please contact Macromatic for additional information.

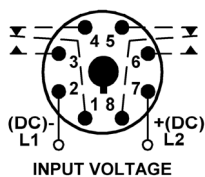


DIAGRAM 134

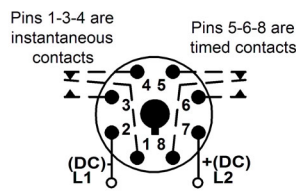


DIAGRAM 182

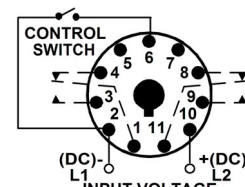


DIAGRAM 183