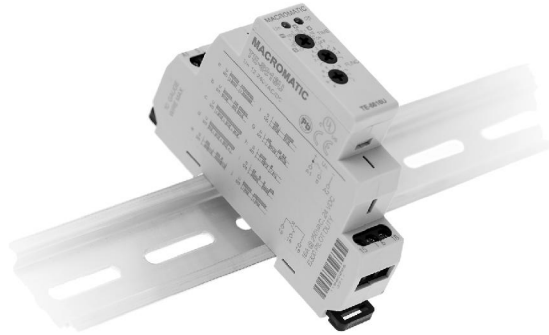


TIME DELAY RELAYS



TE-881 Series Programmable
Multi-Function Multi-Range
17.5mm Modular Enclosure



- u 10 field-selectable functions in one unit
- u Universal input voltage-- works on 12-240V AC/DC
- u 0.1 second - 10 days programmable time delay
- u LED's indicates output relay status & timing mode
- u Compact 17.5mm enclosure mounts on 35mm DIN track
- u 16A SPDT output contacts



The TE-8816U time delay relay offers 10 timing functions and a universal voltage input (12-240VAC/DC) with a programmable time range from 0.1 second – 10 days. It has 16A SPDT output contacts. A green LED indicates input voltage applied; a red LED blinks during timing & is steady when the output relay is energized. It has a compact 17.5mm enclosure which snaps on to 35mm DIN track. This saves space & installation time, which saves money. With all this flexibility, the TE-8816U truly does replace hundreds of separate time delay relays.

Catalog Number		TE-8816U
Input		
Voltage Range	12-240V AC/DC, 50/60Hz	
Operating Range	+10%, -15%	
Burden	3VA (AC), 1.7W (DC)	
Timing		
Number of Functions	10 (see descriptions on Page 79)	
Time Range	0.1 second-10 days (8 different time ranges built-in)	
Repeat Accuracy	+0.2%	
Reset Time	150ms	
Trigger Pulse Length	50ms	
Output		
Configuration	SPDT	
Rating	16A @ 240V AC, 16A @ 24V DC 1HP @ 240V AC, 1/2HP @ 120V AC, B300	
Contact Material	Silver Alloy	
Life	10 million operations mechanical; 100,000 electrical	
Other		
Agency Approval	 LISTED (File #E170213) 	
Temperature	Operating: -20° to 55° C (-4° to 131° F)	
LED Indication	Green-Input Voltage; Red-Timing or Relay ON	
Terminations	14 AWG (2.1mm ²)	



800-238-7474

www.macromatic.com
sales@macromatic.com

Application Data & Dimensions—Page 79

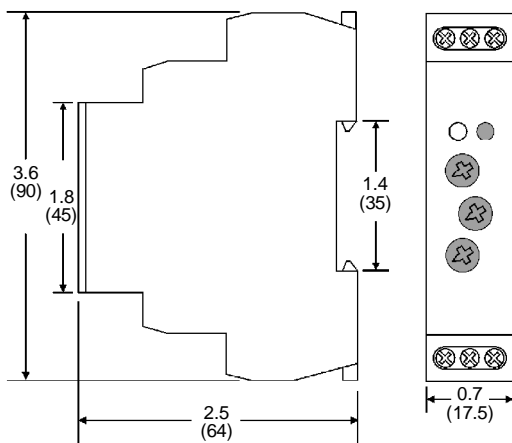
TIME DELAY RELAYS

TE-881 Series Programmable
Multi-Function Multi-Range
Application Data & Dimensions

Functions

FUNCTION	DIAL SETTING	GRAPH
ON DELAY	A	
INTERVAL ON	B	
FLASHER (OFF 1ST)	C	
FLASHER (ON 1ST)	D	
OFF DELAY	E	
SINGLE SHOT	F	
SINGLE SHOT TRAILING EDGE (Non-Retriggerable)	G	
ON DELAY/OFF DELAY	H	
LATCHING RELAY	I	
PULSE GENERATOR (PULSE=0.5 SEC)	J	

Dimensions



All Dimensions in Inches (Millimeters)

Connection Diagram

