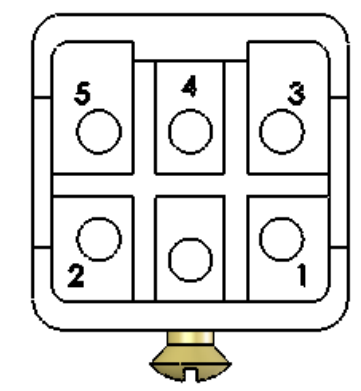
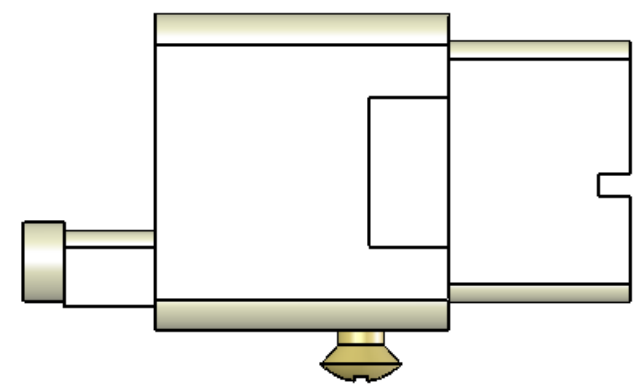
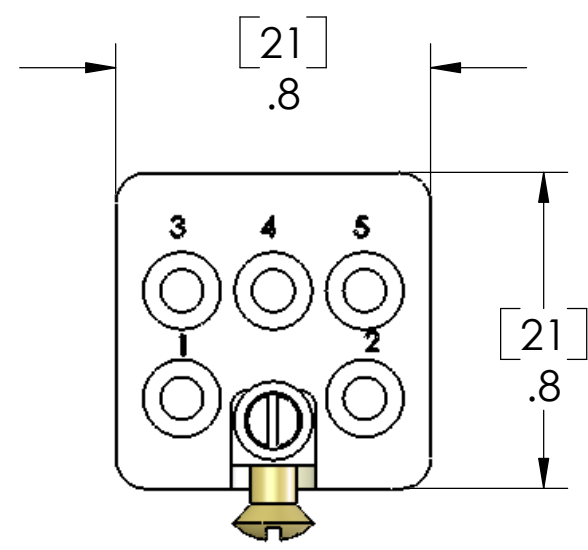


REVISIONS			
REV.	DESCRIPTION	DATE	APPROVED
A	redrawn in sw	2/22/2006	



For use with CCFA-x.x contacts.
 5 poles + Gnd
 16A Max
 UL recognized, CSA Certified for 600V

PROPRIETARY AND CONFIDENTIAL
 THE INFORMATION CONTAINED IN THIS DRAWING IS THE SOLE PROPERTY OF MENCOM CORPORATION. ANY REPRODUCTION IN PART OR AS A WHOLE WITHOUT THE WRITTEN PERMISSION OF MENCOM CORPORATION IS PROHIBITED.

		UNLESS OTHERWISE SPECIFIED:		NAME
		DIMENSIONS ARE IN INCHES	DRAWN	BEM
		TOLERANCES:	CHECKED	
		FRACTIONAL ±1/64	ENG APPR.	
		ANGULAR: MACH ±5° BEND ±5°	MFG APPR.	
		TWO PLACE DECIMAL ±.01	Q.A.	
		THREE PLACE DECIMAL ±.004	COMMENTS:	
		MATERIAL		
		FINISH		
		DO NOT SCALE DRAWING		

MENCOM CORPORATION		
TITLE:		
SIZE	DWG. NO.	REV
B	CQF-05	A
SCALE: 2:1	WEIGHT:	SHEET 1 OF 1