

7 6 5 4 3 2 1

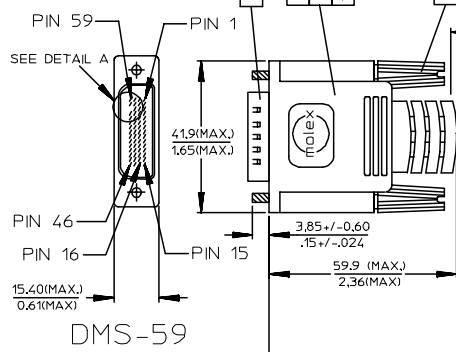
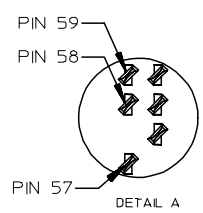
E

D

C

B

A

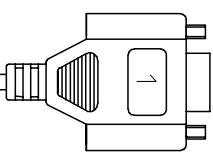


DMS-59

SEE DETAIL B

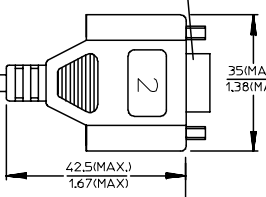


CABLE(I)

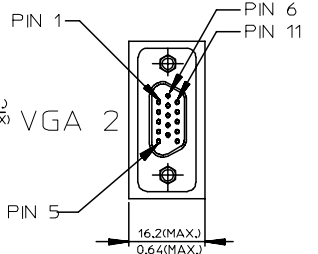


VGA 1

CABLE(II)

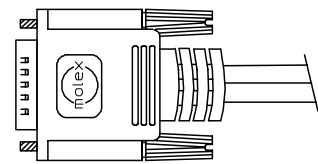


VGA 2

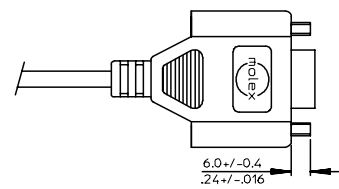


VGA(F)

203 +/- 15  
8.0 +/- .6



BACK SIDE



VGA 1 & VGA 2  
BACK SIDE

MOLEX P/N:  
68805-0002  
REV.A

DETAIL B

ENTER DESCRIPTION EC NO: DG2006-0071 DRWN:PDAI CHKD: APPR:TKAN	2005/10/13 2005/10/13 2005/10/13	QUALITY SYMBOLS ▽=0 ◻=0	GENERAL TOLERANCES (UNLESS SPECIFIED)		DIMENSION STYLE MM/IN		SCALE ---	DESIGN UNITS METRIC	THIRD ANGLE PROJECTION			
	DESCRIPTION A		4 PLACES 3 PLACES 2 PLACES 1 PLACE	mm INCH	DRAWN BY PDAI	DATE 2005/10/07	TITLE DMS59(M) TO DUAL VGA(F) ADAPTER CABLE					
			ANGULAR ±---°		CHECKED BY PDAI	DATE 2005/10/07	MOLEX INCORPORATED					
			DRAFT WHERE APPLICABLE MUST REMAIN WITHIN DIMENSIONS		APPROVED BY ZXDENG	DATE 2005/10/07	MATERIAL NO. 68805-0002	DOCUMENT NO. SD-68805-002	SHEET NO. 1 OF 2			
					SIZE A 4	THIS DRAWING CONTAINS INFORMATION THAT IS PROPRIETARY TO MOLEX INCORPORATED AND SHOULD NOT BE USED WITHOUT WRITTEN PERMISSION						

6

5

4

3

2

1

NOTE:

1. OVERMOLD SPECIFICATION.

1.1 DMS-59 BOOT MOLDED WITH WHITE PVC RESIN, UL94V-0 887800076.

1.2 VGA MOLDING WITH PVC RESIN: 887800145.

VGA INNER MOLDING WITH PE RESIN: 887800008

2. THIS PRODUCT MUST MEET MX RoHS COMPLIANCE.

WIRING DIAGRAM:

SHIELD	SHIELD	GROUND
PIN 59	PIN 7	GROUND(GREEN)
PIN 58	PIN 2	RGB1_GREEN
PIN 57	PIN 5	GROUND(ANALOG)
PIN 56	PIN 13	RGB1_HSYNC
PIN 55	PIN 14	RGB1_VSYNC
PIN 54	PIN 10	GROUND(SYNCS)
PIN 7	PIN 12	RGB1_SDA(DDC DATA)
PIN 6	PIN 15	RGB1_SCL(DDC CLOCK)
PIN 5	PIN 9	+5V
PIN 4	PIN 8	GROUND(BLUE)
PIN 3	PIN 3	RGB1_BLUE
PIN 2	PIN 1	RGB1_RED
PIN 1	PIN 6	GROUND(RED)
DMS-59	VGA1	CABLE FUNCTION

SHIELD	SHIELD	GROUND
PIN 46	PIN 7	GROUND(GREEN)
PIN 47	PIN 2	RGB2_GREEN
PIN 49	PIN 5	GROUND(ANALOG)
PIN 50	PIN 13	RGB2_HSYNC
PIN 51	PIN 14	RGB2_VSYNC
PIN 52	PIN 10	GROUND(SYNCS)
PIN 9	PIN 12	RGB2_SDA(DDC DATA)
PIN 10	PIN 15	RGB2_SCL(DDC CLOCK)
PIN 11	PIN 9	+5V
PIN 12	PIN 8	GROUND(BLUE)
PIN 13	PIN 3	RGB2_BLUE
PIN 14	PIN 1	RGB2_RED
PIN 15	PIN 6	GROUND(RED)
DMS-59	VGA2	CABLE FUNCTION

MATERIAL LIST:

I	LFH60 METAL CAN 887899391	2
H	DMS59 14CKT Insr Mid Male Cont Trim 709841099	1
G	LFH INS MLD STRIP W/O CARRIER GF 15CKT 709841014	2
F	METAL CAN 887899382	2
E	LABEL 887804381	1
D	VGA D-SUB CONNECTOR 887899318	2
C	THUMB SCREW 887806005	2
B	LFH ASSY 751351000	1
A	DVI ANALOG CABLE BLACK OD5.5mm 887808080	203(Ref.) 2
ITEM	DESCRIPTION	QTY.

ENTER DESCRIPTION EC NO: DG2006-0071 DRWN:PDAI CHKD: APPR:TKAN 2005/10/13 2005/10/13 2005/10/13 DESCRIPTION REV	QUALITY SYMBOLS	GENERAL TOLERANCES (UNLESS SPECIFIED)	DIMENSION STYLE	SCALE	DESIGN UNITS	THIRD ANGLE PROJECTION	
	▽=0 □=0	mm      INCH 4 PLACES ± --- ± --- 3 PLACES ± --- ± --- 2 PLACES ± --- ± --- 1 PLACE ± --- ± --- ANGULAR ± ---°	MM/IN	---	METRIC	DRAWN BY      DATE PDAI            2005/10/07 CHECKED BY      DATE PDAI            2005/10/07 APPROVED BY      DATE ZXDENG          2005/10/07	
	DRAFT WHERE APPLICABLE MUST REMAIN WITHIN DIMENSIONS			TITLE	DMS59(M) TO DUAL VGA(F) ADAPTER CABLE		
				MATERIAL NO.	DOCUMENT NO.	SHEET NO.	
			68805-0002	SD-68805-002	2 OF 2		
			SIZE	THIS DRAWING CONTAINS INFORMATION THAT IS PROPRIETARY TO MOLEX INCORPORATED AND SHOULD NOT BE USED WITHOUT WRITTEN PERMISSION			
			A 4				