

6

5

4

3

2

1

1 CABLE:

- 1.1 DESCRIPTION: FIVE CONDUCTOR FLAT CABLE FLEXIBLE, ABRASION RESISTANT, LONG FLEX LIFE.
- 1.2 CONDUCTORS: 1.575MM (0.063) WIDE BY 0.076MM (0.003) THICK ROLLED ANNEALED BARE COPPER, FIVE CONDUCTORS ON 2.54MM (1.00) CENTER LINES.
- 1.3 INSULATION: 105°C POLYESTER/POLYESTER ADHESIVE.
- 1.4 CABLE: 15.54MM (0.600) +/-0.25MM (0.10) WIDE BY 0.254MM (0.010) THICK.
- 1.5 PURCHASER REF: BRAND REX TC6580 OR EQUIVALENT.

2 MARK PART NUMBER AND REVISION PER 88P215, CLASS 8 APROX. WHERE SHOWN

3. ALL CONNECTORS AND DISCRETE TERMINATIONS SHALL BE MARKED OR LABELED WITH THEIR RESPECTIVE REFERENCE DESIGNATIONS IN A PERMANENT AND CONTRASTING COLOR.

4 MOLEX PART NUMBER 15-47-5050

5 MOLEX PART NUMBER 15-47-4053

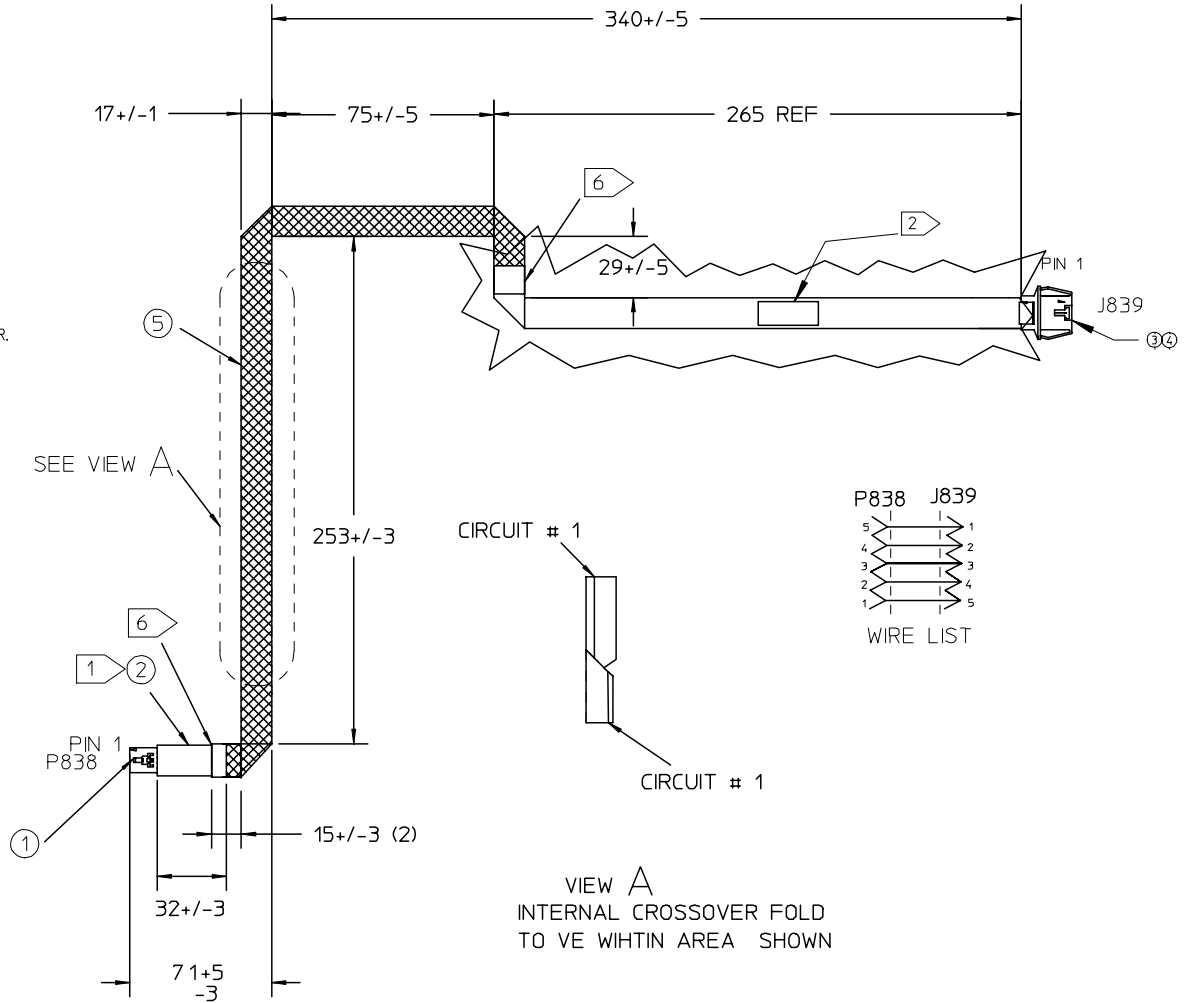
6 TO PREVENT BRAID FROM BECOMING UNRAVELED APPLY SHRINK TUBING OR ELECTRICAL TAPE OVER BRAIDED AREA AS SHOWN.

7 PURCHASE REFERENCE: ALPHA WIRE

WWW.alphawire.com
PART NUMBER: 1233 (15.9 MM WIDE NOMINAL FLAT)

| VOLTAGE RATING | | J/ELECON CONNECTORS | |
|----------------|-------------|---------------------|--------|
| <80V | 80V - 1000V | >1000V | YES NO |
| X | | | X |

| 7 | 5 | 117P31309 | TINNED COPPER BRAID | A/R |
|---|------|-------------|---------------------|-----|
| | 4 | 813W23287 | CLIP, 5 POS | 1 |
| 4 | 3 | | CONN, 5 POS PIN | 1 |
| 1 | 2 | | CABLE, 5 COND FFC | A/R |
| 5 | 1 | | CONN, 5 POS SDC | 1 |
| | ITEM | PART NUMBER | DESCRIPTION | QTY |



RoHS Compliant Assembly
XEROX P/N 117K44770

PREVIOUS CONFIGURATION: 117K42053, REV B,
ADDED MATERIAL RESTRICTIONS PER EHS-1001
REMOVED SHIELDING FROM STAR-BURST AREA,
ZONE ID thru G-7).
PARTS LIST, ADDED PART NUMBERS TO ITEMS
4 AND 5.
CHANGED TOLERANCE ON DIMENSION: 71
ZONE (J-3).
REVISED DIMENSIONING TO REDUCE TOLERANCE
STACK-UP THROUGHOUT THE FIELD OF THE
DRAWING.

| INITIAL RELEASE | DESCRIPTION |
|----------------------------|-------------|
| EC NO: MEX2006-0089 | |
| DRWN: SMARTINEZ 2005/12/07 | |
| CHKD: ACUEVAS 2005/12/08 | |
| APPR: ACUEVAS 2005/12/08 | |
| A | REV |

QUALITY SYMBOLS

▽=0
▽=0

GENERAL TOLERANCES (UNLESS SPECIFIED)

| | mm | INCH |
|----------|-------|-------|
| 4 PLACES | ± --- | ± --- |
| 3 PLACES | ± --- | ± --- |
| 2 PLACES | ± --- | ± --- |
| 1 PLACE | ± --- | ± --- |

ANGULAR ±1/2°

DRAFT WHERE APPLICABLE
MUST REMAIN
WITHIN DIMENSIONS

DIMENSION STYLE
MM ONLY

| DRAWN BY | DATE |
|-------------|------------|
| PARREOLA | 2005/12/07 |
| CHECKED BY | DATE |
| ACUEVAS | 2005/12/07 |
| APPROVED BY | DATE |
| ACUEVAS | 2005/12/07 |

MATERIAL NO.
799150391SIZE
A

THIS DRAWING CONTAINS INFORMATION THAT IS PROPRIETARY TO MOLEX INCORPORATED AND SHOULD NOT BE USED WITHOUT WRITTEN PERMISSION

SCALE
---DESIGN UNITS
INCH

THIRD ANGLE PROJECTION

CABLE ASSY, FRONT DOOR
FINISHER (W816)

MOLEX MOLEX INCORPORATED

DOCUMENT NO.
SD-79915-0391SHEET NO.
1 OF 01