

CATALOG LISTING

131EN91-R

PAGE 1 OF 1

M

ISSUE 10

REVISIONS

A	PR-12904	CEC	12 MAY 84
B	C057370	AD	15 MAY 85
C	C058843	YSK	22 JAN 86
D	C074110	WES	29 APR 87
E	C0-92563	TSM	27 FEB 98
F	207511	CSL	3 FEB 03

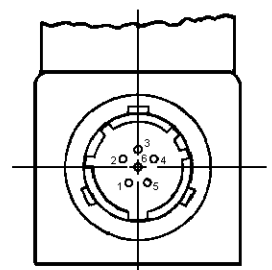
RASTER  
FO-32851-B  
DRAWN

RELEASE NO. PR-12904-T REPLACES X78309-EN  
CHECK CEC 10 MAY 84

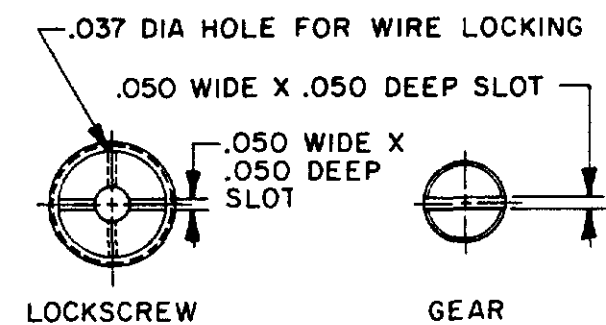
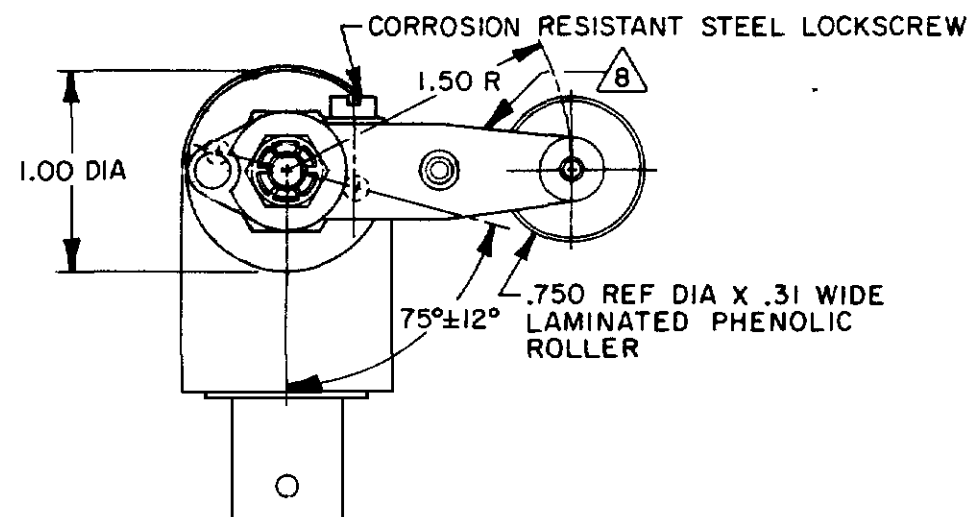
**MICRO SWITCH**  
FREEPORT ILLINOIS U.S.A.  
A DIVISION OF HONEYWELL  
FED. MFG. CODE 91828

**SWITCH-ENCLOSED**

CATALOG LISTING  
**131EN91-R**  
CUSTOMER PART NO.  
18876-13027440

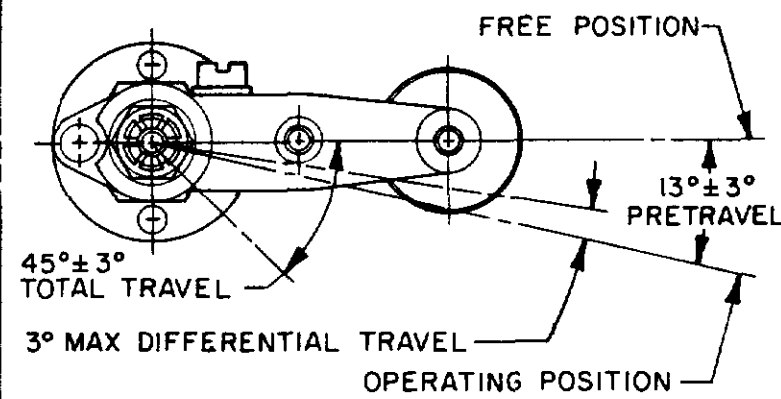


VIEW A  
RECEPTACLE-MS27471Y9E35P

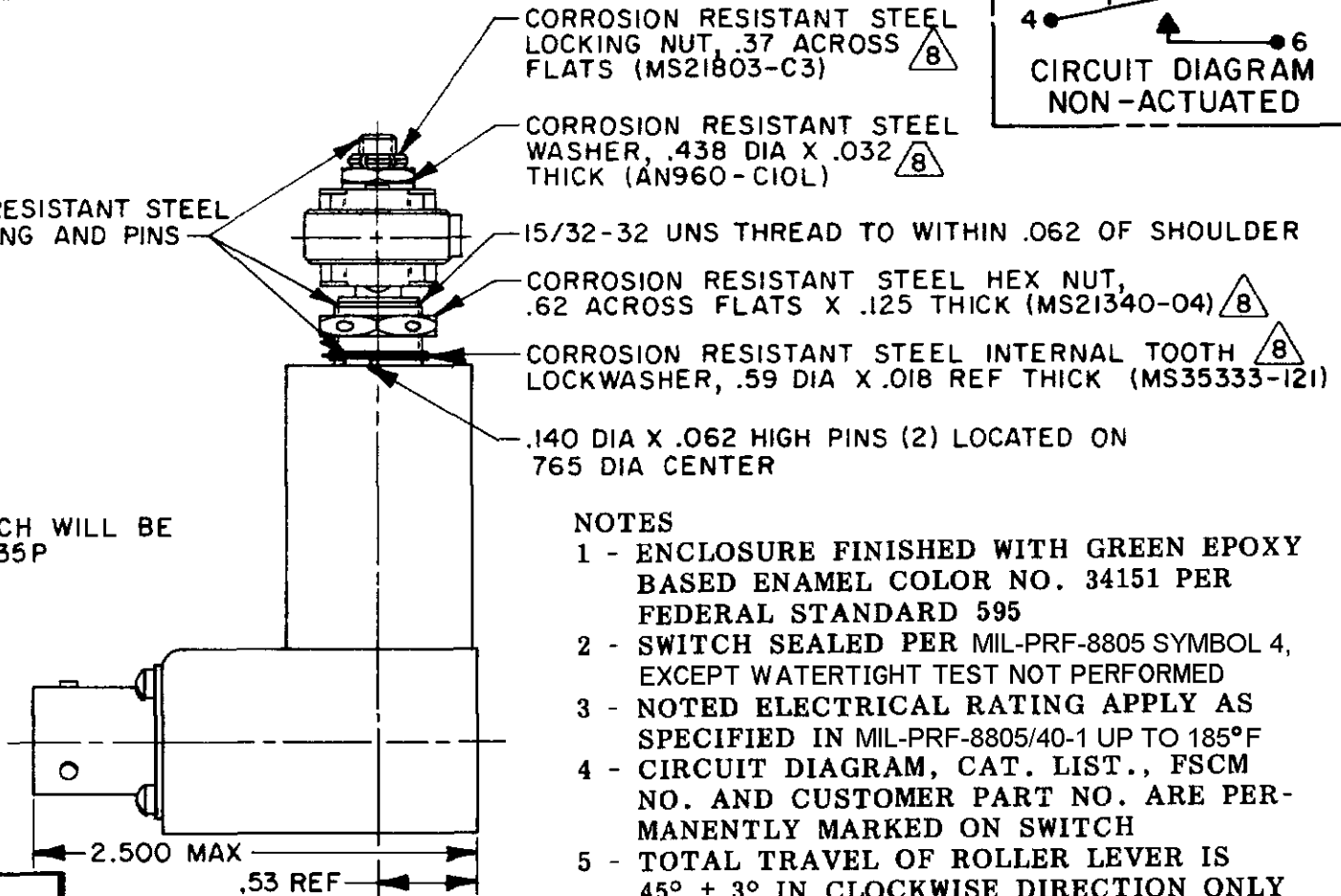
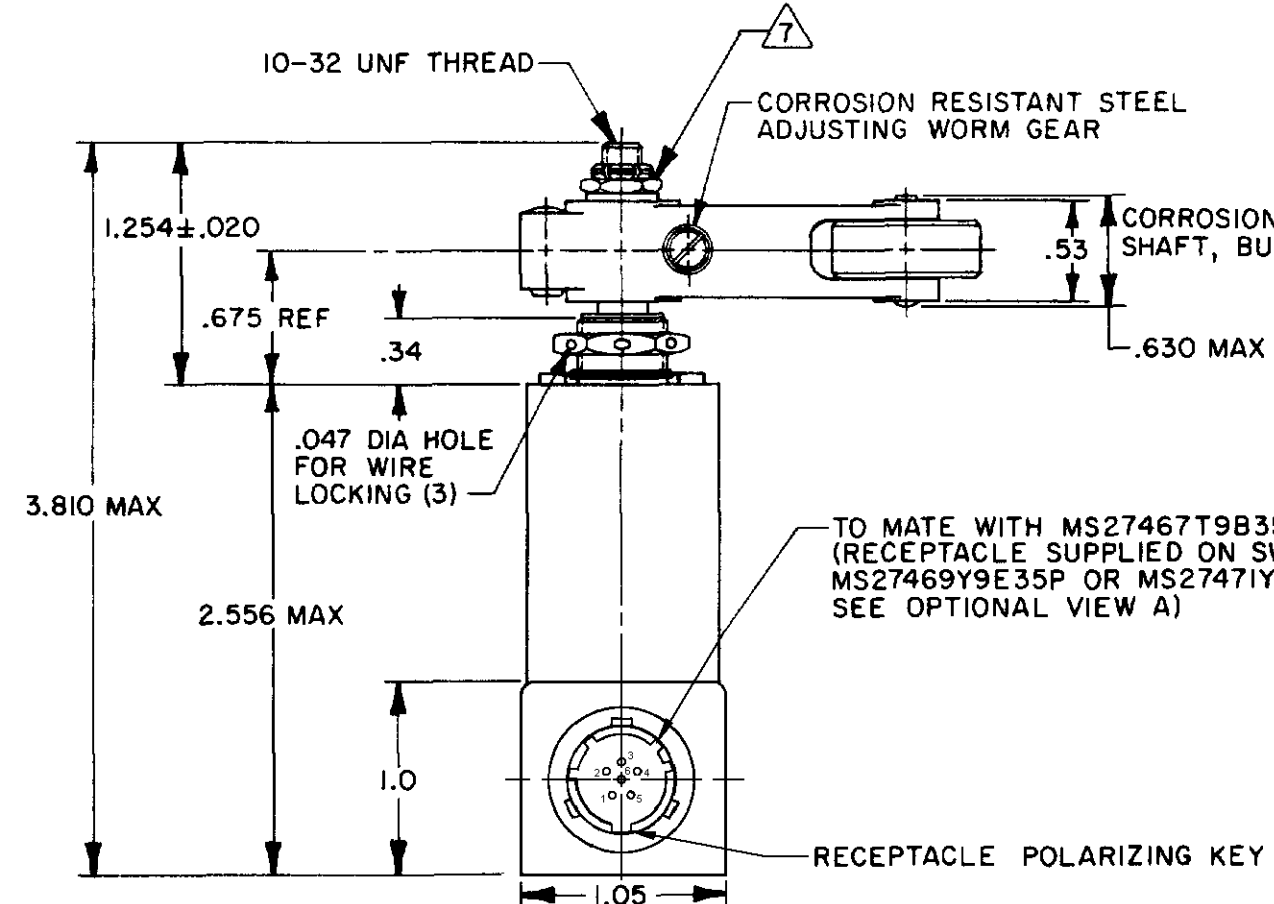
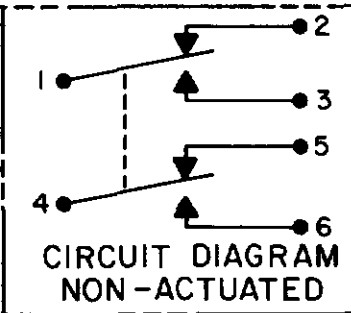


ROLLER LEVER MAY BE ADJUSTED FOR AN INFINITE NUMBER OF POSITIONS THRU 360°. ADJUSTMENT IS MADE BY LOOSENING THE LOCK NUT AND THEN THE LOCKSCREW AND TURNING GEAR UNTIL LEVER IS IN DESIRED POSITION. LOCKSCREW AND LOCK NUT ON SHAFT IS THEN TIGHTENED TO POSITIVELY LOCK LEVER IN POSITION.

LEVER ADJUSTMENT DETAIL  
SCALE 2 TO 1



CHARACTERISTICS



NOTES

- ENCLOSURE FINISHED WITH GREEN EPOXY BASED ENAMEL COLOR NO. 34151 PER FEDERAL STANDARD 595
- SWITCH SEALED PER MIL-PRF-8805 SYMBOL 4, EXCEPT WATERTIGHT TEST NOT PERFORMED
- NOTED ELECTRICAL RATING APPLY AS SPECIFIED IN MIL-PRF-8805/40-1 UP TO 185°F
- CIRCUIT DIAGRAM, CAT. LIST., FSCM NO. AND CUSTOMER PART NO. ARE PERMANENTLY MARKED ON SWITCH
- TOTAL TRAVEL OF ROLLER LEVER IS 45° ± 3° IN CLOCKWISE DIRECTION ONLY WITH SPRING RETURN TO NEUTRAL
- REPLACEMENT MOUNTING HARDWARE - PACKET 19PA10
- DO NOT APPLY MORE THAN 20-25 INCH-POUNDS OF TORQUE WHEN TIGHTENING LOCKING NUT
- HARDWARE MAY BE PACKAGED UNASSEMBLED PER MIL-PRF-8805

THIS DRAWING COVERS A PROPRIETARY ITEM AND IS THE PROPERTY OF MICRO SWITCH A DIVISION OF HONEYWELL THIS DRAWING IS NOT TO BE COPIED OR USED WITHOUT THE APPROVAL OF MICRO SWITCH

CHARACTERISTICS	
OPERATING TORQUE	12-25 IN LB
RELEASE TORQUE	9 IN LB MIN
PRETRAVEL	SEE DETAIL
DIFFERENTIAL TRAVEL	
OVERTRAVEL	
FREE POSITION	

ELECTRICAL DATA	
CONTACT ARRANGEMENT S P D T (2)	
28 VDC	
LOAD	SEA LEVEL 50,000 FT
RES	4 4
IND	2 2
MOTOR	4
LAMP	

SCALE	FULL		
DO NOT SCALE PRINT			
TOLERANCES			
APPLY TO DESIGN UNITS CONVERSIONS ARE ONLY FOR REFERENCE UNLESS NOTED TOLERANCES ARE:			
DIM	TOL	DIM	TOL
mm	mm/in	in	mm/in
NO PLACES	X	17/04	X X
ONE PLACE	X X	0.4/018	X XX
TWO PLACES	X XX	0.15/006	X XXX
THREE PLACES	X XXX		
ANGLES			
DESIGN UNITS	<input type="checkbox"/> METRIC	<input checked="" type="checkbox"/> US CUSTOMARY	
THIRD ANGLE PROJECTION			
WEIGHT	12 OZ MAX		