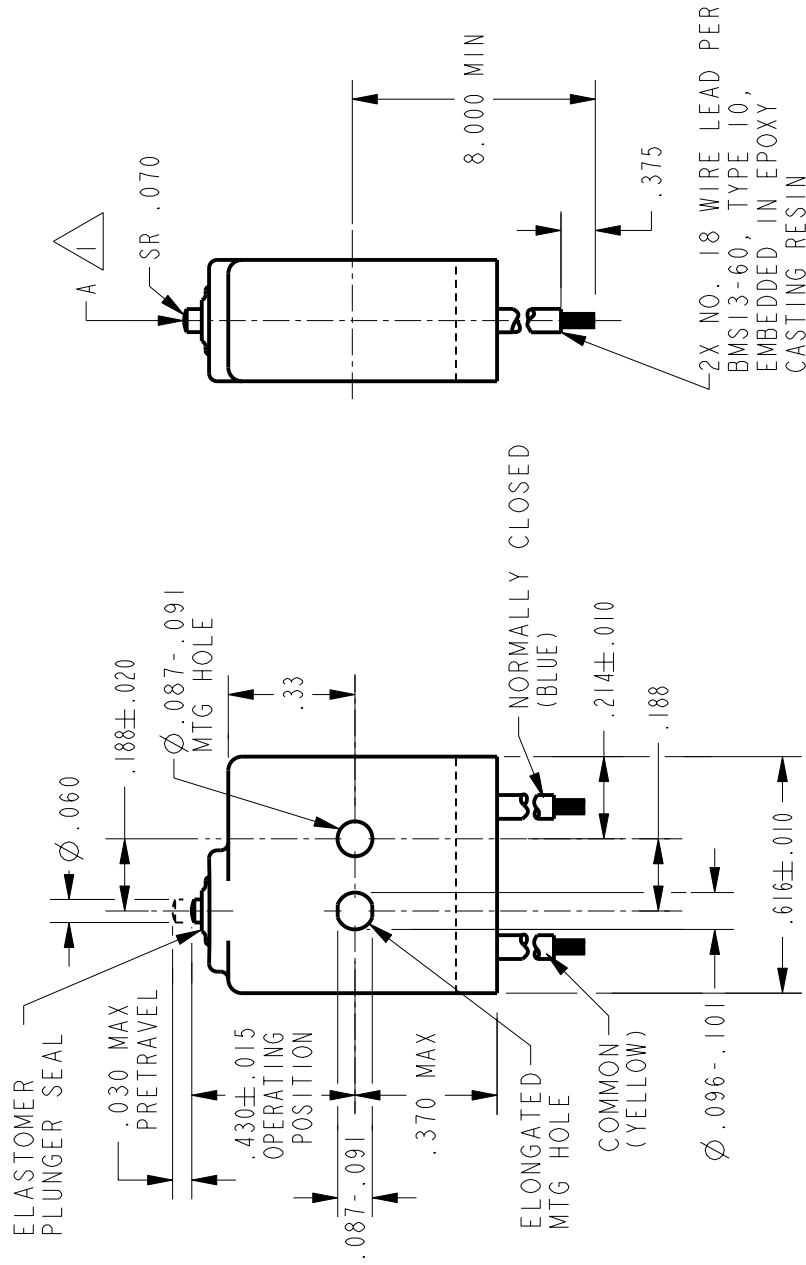
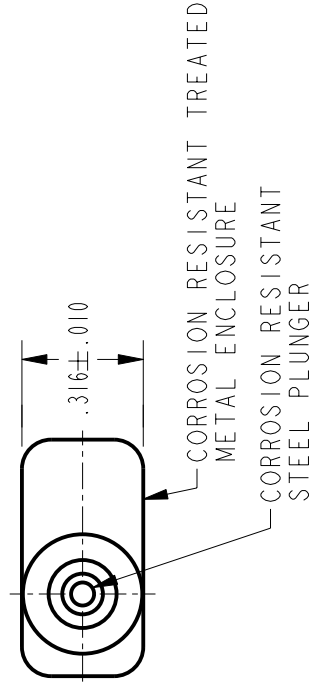


CATALOG LISTING		PAGE 1 OF 1	
14XE66		RELEASE NO. PR-20507	
REPLACES -		GRT	
1		CHECK	
ISSUE		CHECK	
5		19 DEC 01	



NOTES
 1 ACTUATION IN LINE WITH ARROW "A" IS RECOMMENDED
 2 WEIGHT OF SWITCH ONLY IS .16 OZ MAX. WEIGHT OF SWITCH WITH WIRE LEADS IS .75 OZ MAX
 3 - FOR USE IN TEMPERATURE RANGE FROM MINUS -65° F TO PLUS $+300^{\circ}$ F

ANSI Y14.5M-1982 APPLIES

THIS DRAWING COVERS A PROPRIETARY ITEM AND IS THE PROPERTY OF MICRO SWITCH, A DIVISION OF HONEYWELL. THIS DRAWING IS NOT TO BE COPIED OR USED WITHOUT THE APPROVAL OF MICRO SWITCH.



CHARACTERISTICS		ELECTRICAL DATA	
OPERATING FORCE	----- 9 OZ MAX	CONTACT ARRANGEMENT	
RELEASE FORCE	----- 2 OZ MIN	S P N C	
RELEASE TRAVEL	----- .004 MIN	28 VOLTS DC RATING	
DIFFERENTIAL TRAVEL	----- .005 MAX	INDUCTIVE ----- SEA LEVEL ----- 4 AMP	
OVERTRAVEL	----- .004 MIN	RESISTIVE ----- SEA LEVEL ----- 2.5 AMP	
		50,000 FT ----- 7 AMP	
		50,000 FT ----- 7 AMP	
SCALE 2 : 1		SCALE PRINT	
UNLESS OTHERWISE SPECIFIED TOLERANCES ARE		DO NOT	
ONE PLACE (. 0)		± .030	
TWO PLACE (. 0 0)		± .015	
THREE PLACE (. 0 0 0)		± .005	
ANGLES		±	
WEIGHT		2	

PTC/CAD 20
 DRAWN