

MICRO SWITCH

A DIVISION OF MINNEAPOLIS-HONEYWELL REGULATOR COMPANY
 FREEPORT, ILLINOIS

FED. MFR. CODE 91929

SWITCH - BASIC

(M) ISE2-3
 ISSUE 4

ISE2-3
 PAGE 1 OF 1

M

DRAWING NUMBER

ISSUE
 X89

REPLACES

RELEASE NO.

CHECK

CHECK

CHECK

CHECK

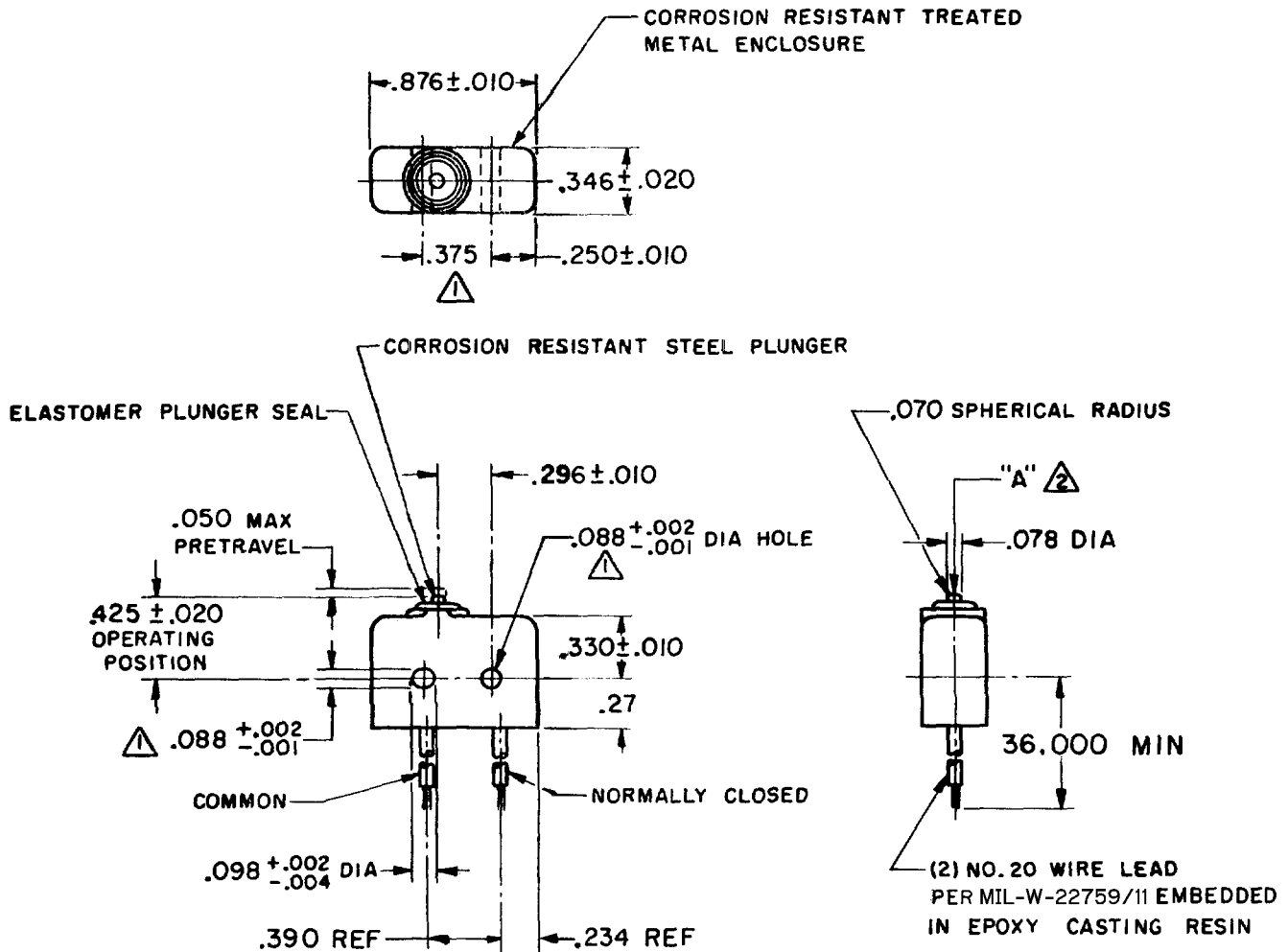
REVISIONS

A	COI6449	R G C	1 MARCH 82
B	CO-34213	J A L	24 SEPT 74
C	CO 51463-D	WJM	16 JUL 82
D	CO57041A	CJH	21 MAR 85
E	CO94274	DLM	MAR 99

FORMTEK
 FO-50378

DRAWN

CHECK



NOTE -
 ▲ MOUNTING HOLES WILL ACCEPT .087 MAX DIA PINS OR SCREWS ON $.375 \pm .002$ CENTERS
 ▲ ACTUATION IN LINE WITH ARROW "A" IS RECOMMENDED
 ▲ WEIGHT OF SWITCH ONLY IS .26 OZ MAX
 ▲ WEIGHT OF SWITCH WITH WIRE LEADS IS 1.00 OZ MAX

THIS DRAWING COVERS A PROPRIETARY ITEM AND IS THE PROPERTY OF MICRO SWITCH, A DIVISION OF MINNEAPOLIS-HONEYWELL REGULATOR CO. THIS DRAWING IS NOT TO BE COPIED OR USED WITHOUT THE APPROVAL OF MICRO SWITCH.

CHARACTERISTICS

OPERATING FORCE	5-17 OZ
RELEASE FORCE	4 OZ MIN
RELEASE TRAVEL	.004 MIN
DIFFERENTIAL TRAVEL	.004 MAX
OVERTRAVEL	.003 MIN

ELECTRICAL DATA

CONTACT ARRANGEMENT	
S P N C	
250 VAC	5 AMP
30 VOLTS DC RATING	
INDUCTIVE	SEA LEVEL - 3 AMP
	50,000 FT - 2.5 AMP
RESISTIVE	SEA LEVEL - 5 AMP
	50,000 FT - 5 AMP
MAXIMUM INRUSH	24 AMP

SCALE FULL

DO NOT SCALE PRINT

UNLESS OTHERWISE SPECIFIED

DIMENSIONS ARE IN INCHES
TOLERANCES ARE:
 ONE PLACE (.0) ±.030
 TWO PLACE (.00) ±.015
 THREE PLACE (.000) ±.005
 ANGLES ±

WEIGHT

▲