

HONEYWELL

21CH186-6

See full Datasheet below...

onlinecomponents.com

THE ONLINE DISTRIBUTOR OF ELECTRONIC COMPONENTS

BUY NOW



MASTERTM
ELECTRONICS

BUY NOW

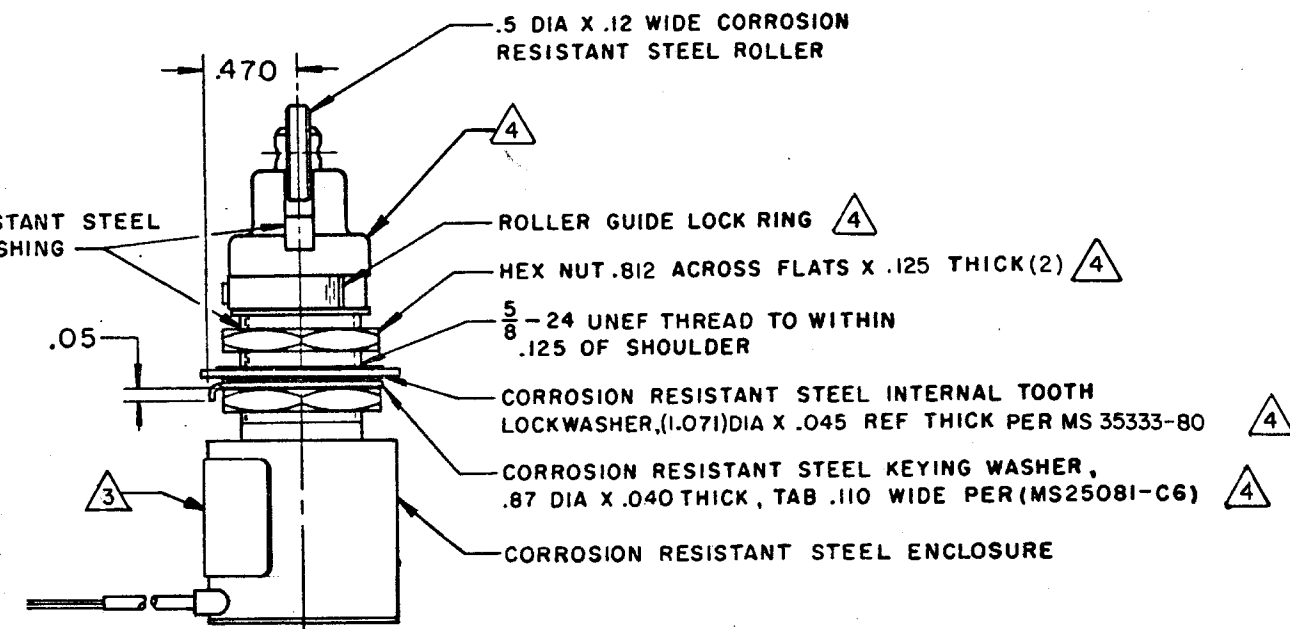
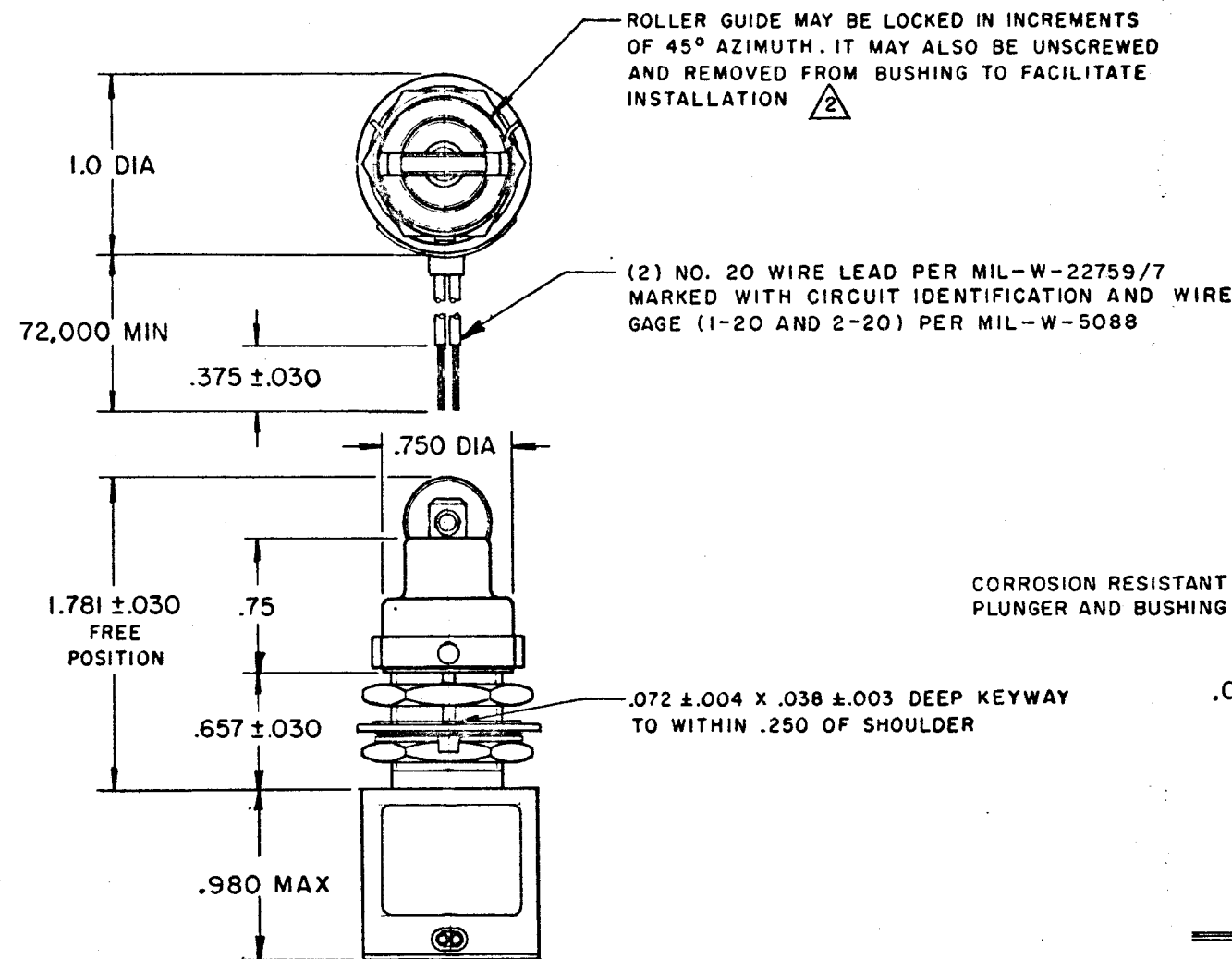
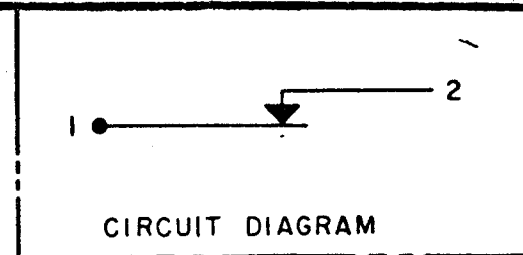
masterelectronics.com & onlinecomponents.com
are **authorized** e-commerce distributors
of electronic components.

MICRO SWITCH

FED. MFR. CODE 91929

SWITCH-ENCLOSED

CATALOG LISTING
21CH186-6



21CH186-6
 M
 DRAWING NUMBER
 16
 ISSUE
 REVISIONS
 A CO22249 L CO63259
 M B F TSK
 19 DEC 66 15 APR 88
 B CO22953 M CO72810
 M B F L J F
 2 NOV 67 2 JUN 92
 C CO32118 N CO74101
 D B W DAW
 6 OCT 73 8 FEB 93
 D CO-3472 P CO-75668 B
 J A L S A V
 8 JAN 78 20 OCT 93
 E CO35858 R CO-77504-C
 D J W DLT
 26 AUG 75 26 JUL 94
 F CO 44351
 S L B
 2 JAN 78
 G CO 47573
 J M J
 25 JUL 80
 H CO 51725A
 S L B
 1-SEPT 82
 J CO 55640
 M A M
 4 SEPT 84
 K CO57370
 TSK
 16 MAY 85
 M B F
 16 MAR 66
 DRAWN
 CHECK
 28 MAR 66
 16 MAR 66
 16 MAR 66

NOTES

- 1 - SWITCH SEALED PER MIL-S-8805 SYMBOL 3
- $\triangle 2$ TO ADJUST ROLLER DIRECTION, REMOVE ROLLER GUIDE LOCK RING, SCREW ROLLER GUIDE DOWN AS FAR AS POSSIBLE, THEN UNSCREW TO DESIRED DIRECTION. SECURE BY REPLACING ROLLER GUIDE LOCK RING
- $\triangle 3$ CAT. LIST., MICRO IDENTIFICATION, CIRCUIT DIAGRAM AND DATE CODE ARE SHOWN ON NAMEPLATE
- $\triangle 4$ HARDWARE MAY BE PACKAGED UNASSEMBLED PER MIL-S-8805

THIS DRAWING COVERS A PROPRIETARY ITEM AND IS THE PROPERTY OF MICRO SWITCH, A DIVISION OF MINNEAPOLIS-HONEYWELL REGULATOR CO. THIS DRAWING IS NOT TO BE COPIED OR USED WITHOUT THE APPROVAL OF MICRO SWITCH.

| CHARACTERISTICS | ELECTRICAL DATA | | SCALE FULL |
|-----------------------------------|---------------------|----------------------|-------------------------------|
| OPERATING FORCE ——— 6-12 LB | CONTACT ARRANGEMENT | | DO NOT SCALE PRINT |
| FULL OVERTRAVEL FORCE — 30 LB MAX | S P N C | | UNLESS OTHERWISE SPECIFIED |
| RELEASE FORCE ——— 4 LB MIN | 28 VDC | | DIMENSIONS ARE IN INCHES |
| PRETRAVEL ——— .040 MAX | LOAD | SEA LEVEL 50,000 FT. | TOLERANCES ARE: |
| DIFFERENTIAL TRAVEL — .020 MAX | RES | 4 4 | ONE PLACE (.0) \pm .030 |
| OVERTRAVEL ——— .250 MIN | IND | 2 2 | TWO PLACE (.00) \pm .015 |
| | MOTOR | 4 | THREE PLACE (.000) \pm .005 |
| | | | ANGLES \pm |
| | | | WEIGHT 6.0 OZ MAX |