

MICRO SWITCH

FREEDPORT ILLINOIS, U.S.A
A DIVISION OF HONEYWELL

FED. MFG. CODE 91929

SWITCH - BASIC

CATALOG LISTING
5XE401-T

5XE401-T

M

DRAWING NUMBER

1

ISSUE

REPLACES

RELEASE NO.

CHECK

CHECK

10 MAY 71

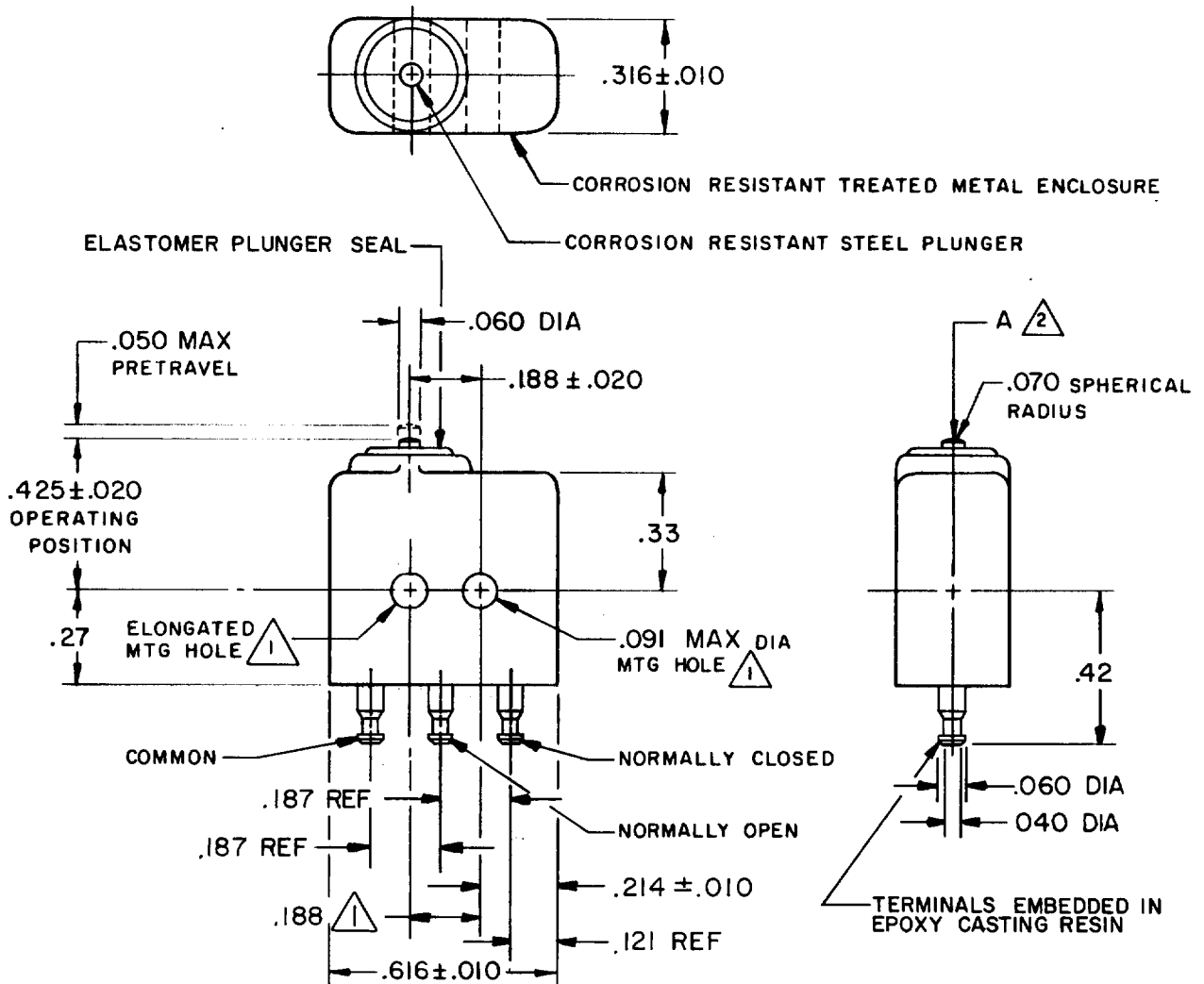
LSD

71

MAY 71

DRAWN

FO-50378-1A



NOTE-

- ▲ MOUNTING HOLES WILL ACCEPT $.087$ MAX DIA PINS OR SCREWS ON $.188 \pm .002$ CENTERS
- ▲ ACTUATION IN LINE WITH ARROW "A" IS RECOMMENDED

THIS DRAWING COVERS A PROPRIETARY ITEM AND IS THE PROPERTY OF MICRO SWITCH, A DIVISION OF HONEYWELL. THIS DRAWING IS NOT TO BE COPIED OR USED WITHOUT THE APPROVAL OF MICRO SWITCH.

CHARACTERISTICS

OPERATING FORCE ----- 5-17 OZ
RELEASE FORCE ----- 3 OZ MIN
RELEASE TRAVEL ----- .004 MIN
DIFFERENTIAL TRAVEL ----- .005 MAX
OVERTRAVEL ----- .004 MIN

ELECTRICAL DATA

CONTACT ARRANGEMENT
S P D T
28 VOLTS DC RATING
INDUCTIVE ----- SEA LEVEL --- .5 AMP
RESISTIVE ----- SEA LEVEL --- 1.03 AMP

SCALE 2 TO 1

DO NOT SCALE PRINT

UNLESS OTHERWISE NOTED

DIMENSIONS ARE IN INCHES

TOLERANCES ARE:

ONE PLACE (.0) $\pm .030$
TWO PLACE (.00) $\pm .015$
THREE PLACE (.000) $\pm .005$
ANGLES \pm

WEIGHT .16 OZ MAX