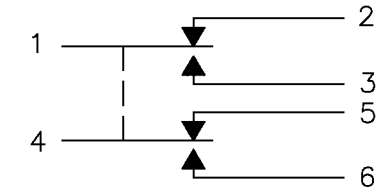


MICRO SWITCH
a Honeywell Division

FED. MFG. CODE 91929

SWITCH-ENCLOSED

CATALOG LISTING
602EN1-6B



CIRCUIT DIAGRAM

602EN1-6B

M

DRAWING NUMBER

3

ISSUE

REPLACES

RELEASE NO. PR-18284

CHECK

REVISIONS

A	PR18284
	MAM 8 MAY 90
B	CO-84521-A
	DLT 18 APR 97

CHECK

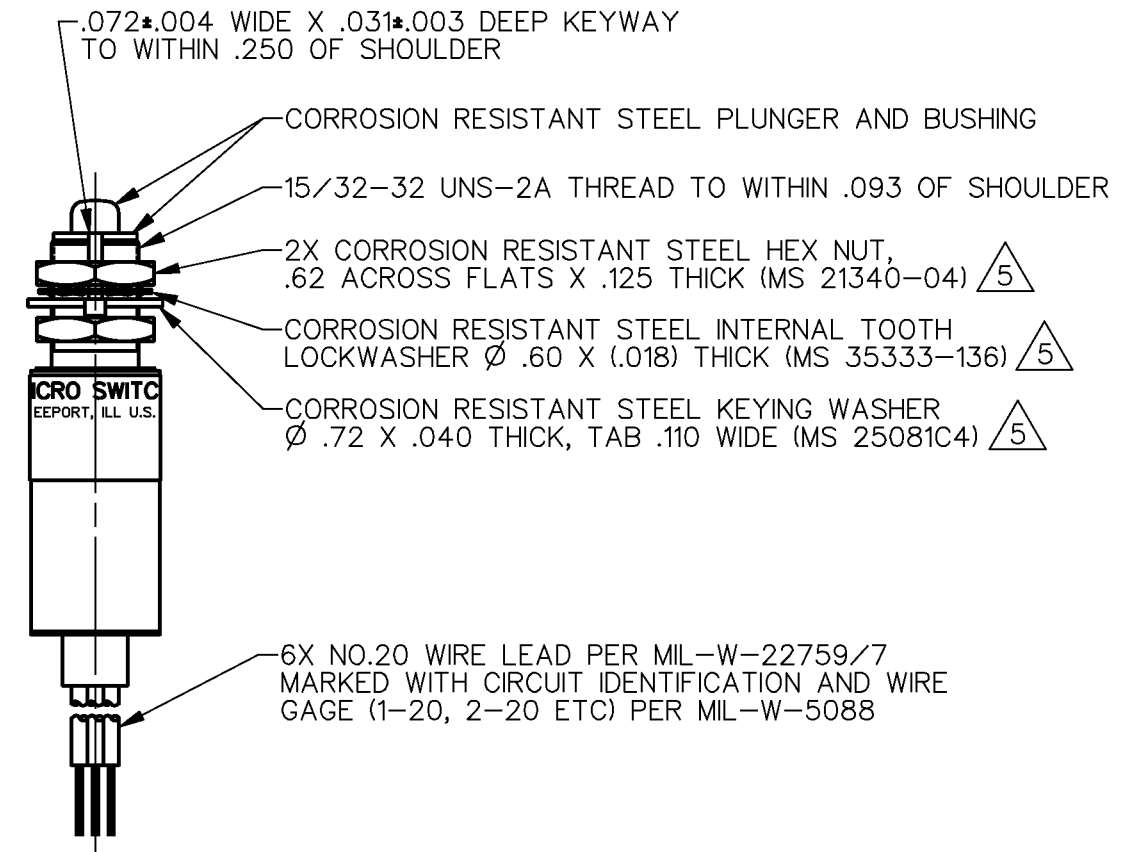
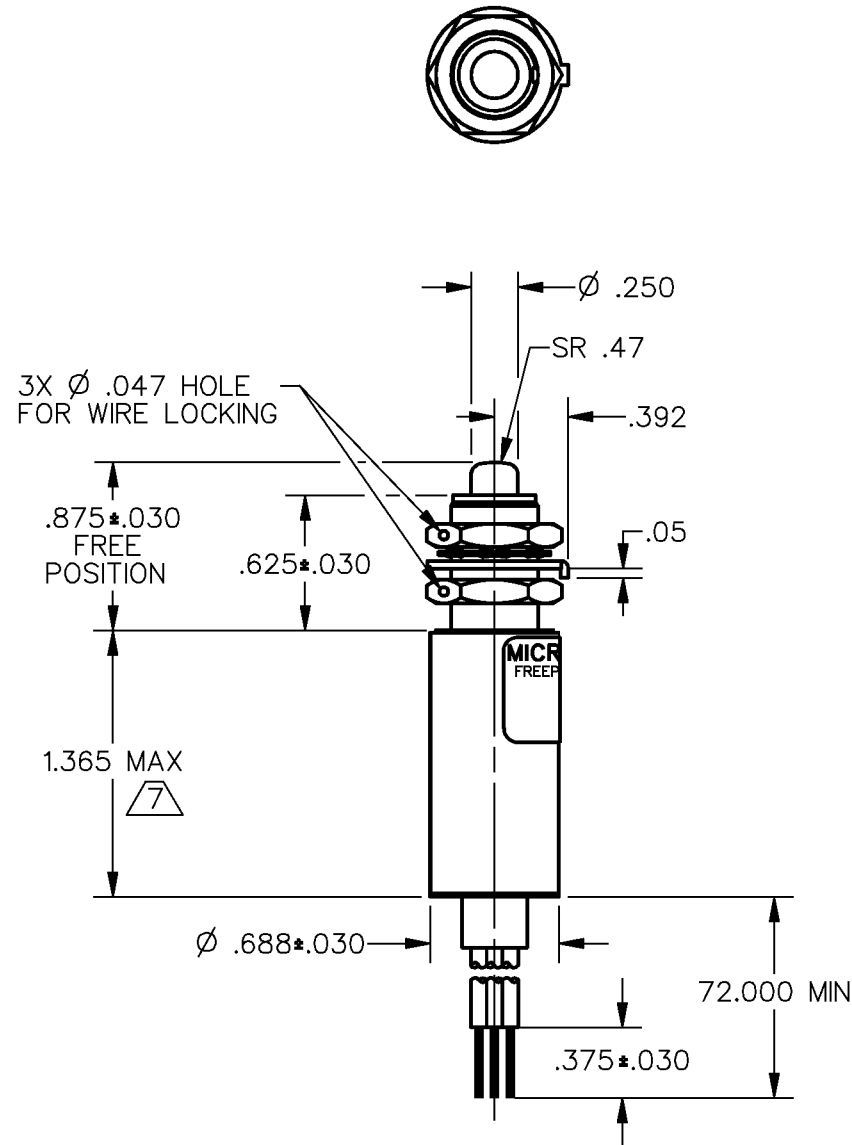
9 MAY 90

9 MAY 90

CHECK

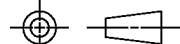
9 MAY 90

DDM/CAD
DRAWN



THIS DRAWING COVERS A PROPRIETARY ITEM AND IS THE PROPERTY OF MICRO SWITCH, A DIVISION OF HONEYWELL. THIS DRAWING IS NOT TO BE COPIED OR USED WITHOUT THE APPROVAL OF MICRO SWITCH

THIRD ANGLE PROJECTION



SCALE FULL

DO NOT SCALE PRINT

CHARACTERISTICS	ELECTRICAL DATA
OPERATING FORCE ——— 6 -12 LB	CONTACT ARRANGEMENT 2X S P D T
FULL OVERTRAVEL FORCE --- 30 LB MAX	28 VDC
RELEASE FORCE ——— 4 LB MIN	LOAD
PRETRAVEL ——— .040 MAX	SEA LEVEL 50,000 FT.
DIFFERENTIAL TRAVEL — .020 MAX	RES 7 7
OVERTRAVEL ——— .125 MIN	IND 4 2.5
	MOTOR 4
	LAMP

UNLESS OTHERWISE SPECIFIED TOLERANCES ARE	
ONE PLACE (.0)	±.030
TWO PLACE (.00)	±.015
THREE PLACE (.000)	±.005
ANGLES	±
WEIGHT	6.2 OZ MAX

NOTES

- 1 - CORROSION RESISTANT STEEL ENCLOSURE
- 2 - SWITCH SEALED PER MIL-S-8805 SYMBOL 4
- 3 - COINCIDENCE OF OPERATING AND RELEASING POINTS: .010 INCH OF PLUNGER TRAVEL
- 4 - CIRCUIT DIAGRAM, CATALOG LISTING AND DATE CODE ARE SHOWN ON NAMEPLATE
- 5 - HARDWARE MAY BE PACKAGED UNASSEMBLED PER MIL-S-8805
- 6 - BOTTOM OF SWITCH COATED WITH RESILIENT POTTING MATERIAL
- 7 - THIS DIMENSION EXCLUDES THE RESILIENT POTTING MATERIAL ON THE BOTTOM OF THE SWITCH