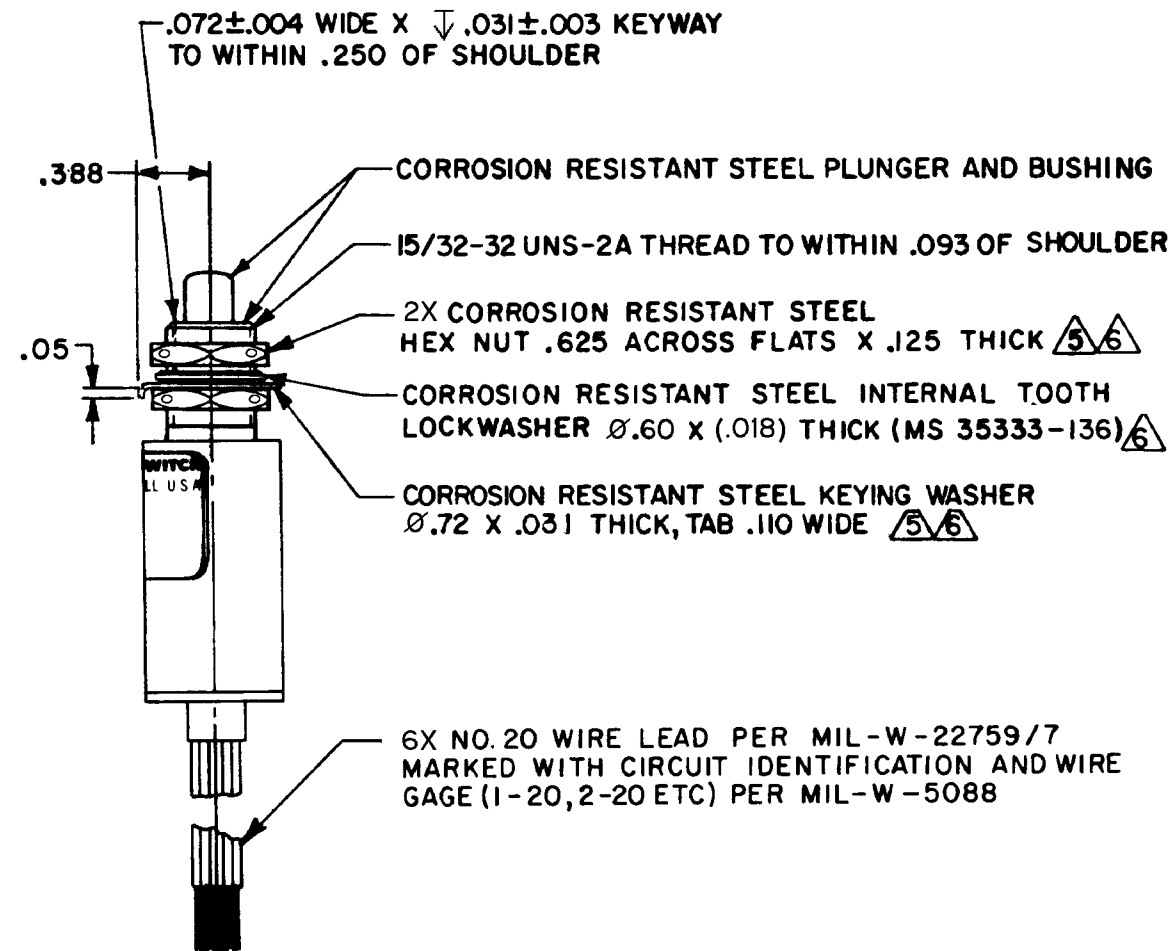
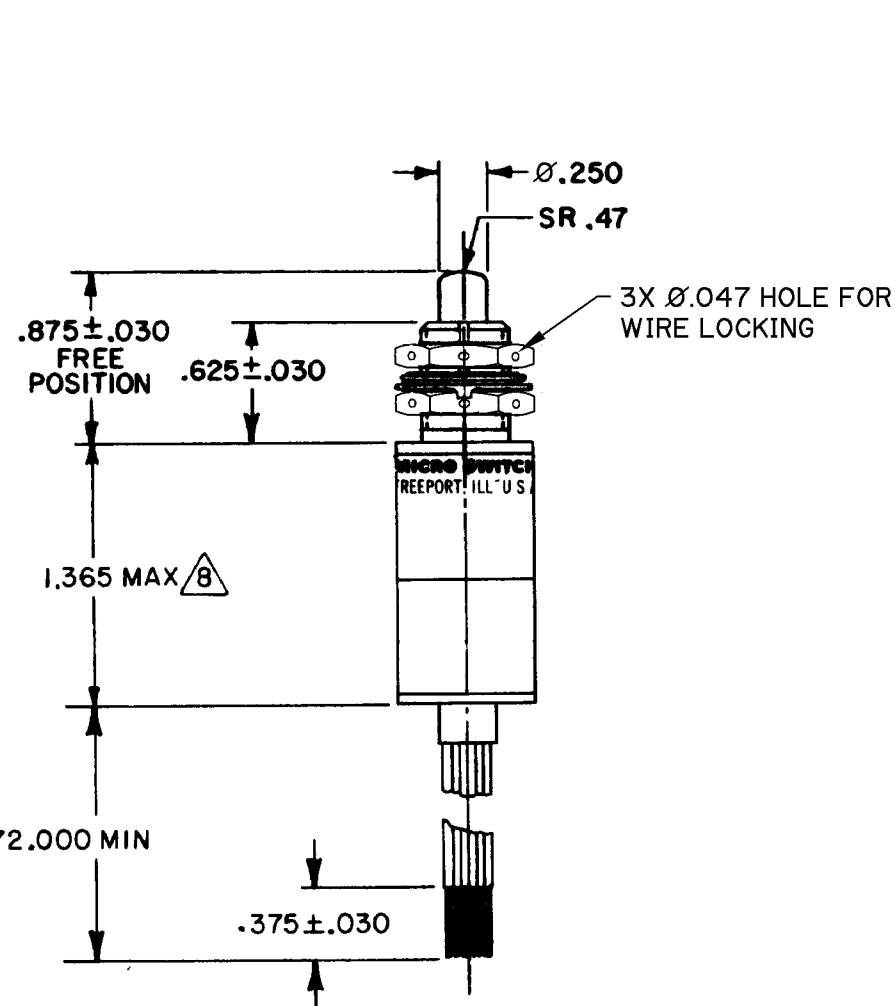
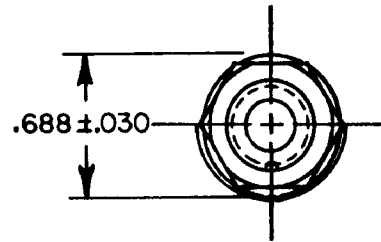
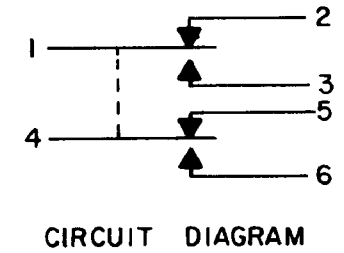


**MICRO SWITCH**  
 FREEPORT ILLINOIS U.S.A.  
 A DIVISION OF HONEYWELL  
 FED. MFG. CODE 91929

**SWITCH-ENCLOSED**

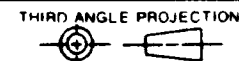
CATALOG LISTING  
**602EN55-6B**



- NOTES**
- 1 - CORROSION RESISTANT STEEL ENCLOSURE
  - 2 - SWITCH SEALED PER MIL-S-8805 SYMBOL 4
  - 3 - CIRCUIT DIAGRAM, CATALOG LISTING, FEDERAL MANUFACTURING CODE AND DATE CODE ARE SHOWN ON NAMEPLATE
  - 4 - COINCIDENCE OF OPERATING AND RELEASING POINTS: .010 OF PLUNGER TRAVEL
  - (5/6) REPLACEMENT MOUNTING HARDWARE PACKET 19PA9
  - (6) HARDWARE MAY BE PACKAGED UNASSEMBLED PER MIL-S-8805
  - (7/8) BOTTOM OF SWITCH COATED WITH RESILIENT POTTING MAT'L THIS DIMENSION EXCLUDES THE RESILIENT POTTING MATERIAL ON THE BOTTOM OF THE SWITCH

CATALOG LISTING  
 602EN55-6B  
 PAGE 1 OF 1  
 RELEASE NO. PR-8409  
 REPLACES  
 CHECK  
 REVISIONS  
 A PR8409 23 JAN 80  
 B CO44351 3 MAR 80  
 C CO47573 7 AUG 80  
 D CO49280 25 MAR 81  
 E CO49806 25 SEPT 81  
 F CO50123 24 SEP 86  
 G OBS CO69514 24 JAN 80  
 H REINST PR23392 24 MAR 98  
 FORMTEK  
 DRAWN  
 S L B 23 JAN 80  
 CHECK  
 C E B

THIS DRAWING COVERS A PROPRIETARY ITEM AND IS THE PROPERTY OF MICRO SWITCH, A DIVISION OF HONEYWELL. THIS DRAWING IS NOT TO BE COPIED OR USED WITHOUT THE APPROVAL OF MICRO SWITCH.



SCALE FULL

DO NOT SCALE PRINT

TOLERANCES  
 APPLY TO DESIGN UNITS CONVERSIONS ARE ONLY FOR REFERENCE UNLESS NOTED TOLERANCES ARE Z

NO PLACES	DESIGN UNITS	TOL.	DESIGN UNITS	TOL.
ONE PLACE	IN	1/64	MM	0.025
TWO PLACES	IN	0.0010	MM	0.0010
THREE PLACES	IN	0.0001	MM	0.0001

DESIGN UNITS  METRIC  US CUSTOMARY

RAW MATERIAL-COMMERCIAL STANDARD  
 MICRO SWITCH STANDARDS APPLY  
 DIMENSIONS ARE TO BE MET BEFORE  
 PROTECTIVE COATINGS ARE APPLIED

WEIGHT 6.2 OZ MAX

CHARACTERISTICS	ELECTRICAL DATA
OPERATING FORCE ----- 3-6 LB	CONTACT ARRANGEMENT 2X S P D T
FULL OVERTRAVEL FORCE --- 17 LB MAX	LOAD 28 VDC
RELEASE FORCE ----- 2 LB MIN	SEA LEVEL 50,000 FT.
PRETRAVEL ----- .040 MAX	RES 7 7
DIFFERENTIAL TRAVEL --- .020 MAX	IND 4 2.5
OVERTRAVEL ----- .125 MIN	MOTOR 4
	LAMP

ANSI Y14.5M-1982 APPLIES