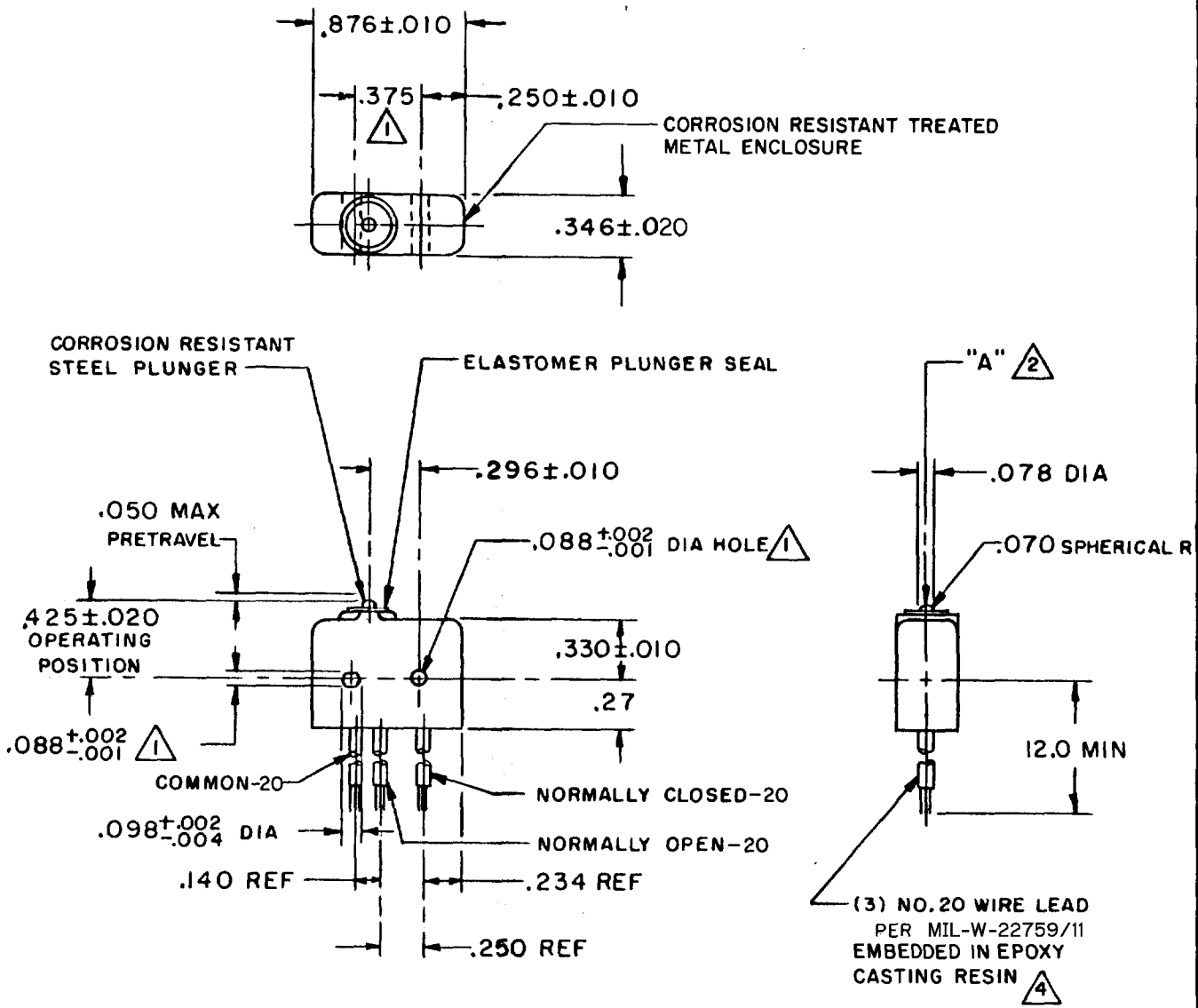


FORMTEK
 FO-52848
 DRAWN
 R E R 15 MAY 73
 CHECKED L S D 22 MAY 73
 CHECKED U
 REVISIONS
 D CO5704IA
 C JH SEP 82
 C CO52067
 J A L 26 SEPT 74
 B CO-34213
 R E R 18 MAY 73
 A PR-3358
 ISSUE 7
 DRAWING NUMBER
 M 6SE173
 PAGE 1 OF 1
 RELEASE NO. PR-3354
 REPLACES



- NOTE -**
- 1 - MOUNTING HOLES WILL ACCEPT .087 MAX DIA PINS OR SCREWS ON $.375 \pm .002$ CENTERS
 - 2 - ACTUATION IN LINE WITH ARROW "A" IS RECOMMENDED
 - 3 - WEIGHT OF SWITCH ONLY IS .26 OZ MAX, WEIGHT OF SWITCH WITH WIRE LEADS IS .59 OZ MAX
 - 4 - WIRE LEADS MARKED WITH CIRCUIT IDENTIFICATION AND WIRE GAGE (CLOSED - 20, OPEN - 20, AND COMMON - 20) PER MIL-W-5088

THIS DRAWING COVERS A PROPRIETARY ITEM AND IS THE PROPERTY OF MICRO SWITCH, A DIVISION OF HONEYWELL. THIS DRAWING IS NOT TO BE COPIED OR USED WITHOUT THE APPROVAL OF MICRO SWITCH.

CHARACTERISTICS	ELECTRICAL DATA	SCALE FULL
OPERATING FORCE ----- 5-17 OZ	CONTACT ARRANGEMENT S P D T	DO NOT SCALE PRINT
RELEASE FORCE ----- 4 OZ MIN	250 VAC ----- 5 AMP	UNLESS OTHERWISE NOTED
RELEASE TRAVEL ----- .004 MIN	30 VOLTS DC RATING	DIMENSIONS ARE IN INCHES
DIFFERENTIAL TRAVEL ----- .004 MAX	INDUCTIVE ----- SEA LEVEL -- 3 AMP	TOLERANCES ARE
OVERTRAVEL ----- .003 MIN	50,000 FT -- 2.5 AMP	ONE PLACE (.0) $\pm .030$
	RESISTIVE ----- SEA LEVEL -- 5 AMP	TWO PLACE (.00) $\pm .015$
	50,000 FT -- 5 AMP	THREE PLACE (.000) $\pm .005$
	MAXIMUM INRUSH ----- 24 AMP	ANGLES \pm
		WEIGHT \pm