

MICRO SWITCH

FREEMONT ILLINOIS, U S A
A DIVISION OF HONEYWELL
FED. MFG. CODE 9 1929

SWITCH - BASIC

CATALOG LISTING
BZ-2RW82255T-S

M BZ-2RW82255T-S

PAGE 1 OF 1

REPLACES

RELEASE NO. PR-6725

DRAWING NUMBER

9

ISSUE

CHECK

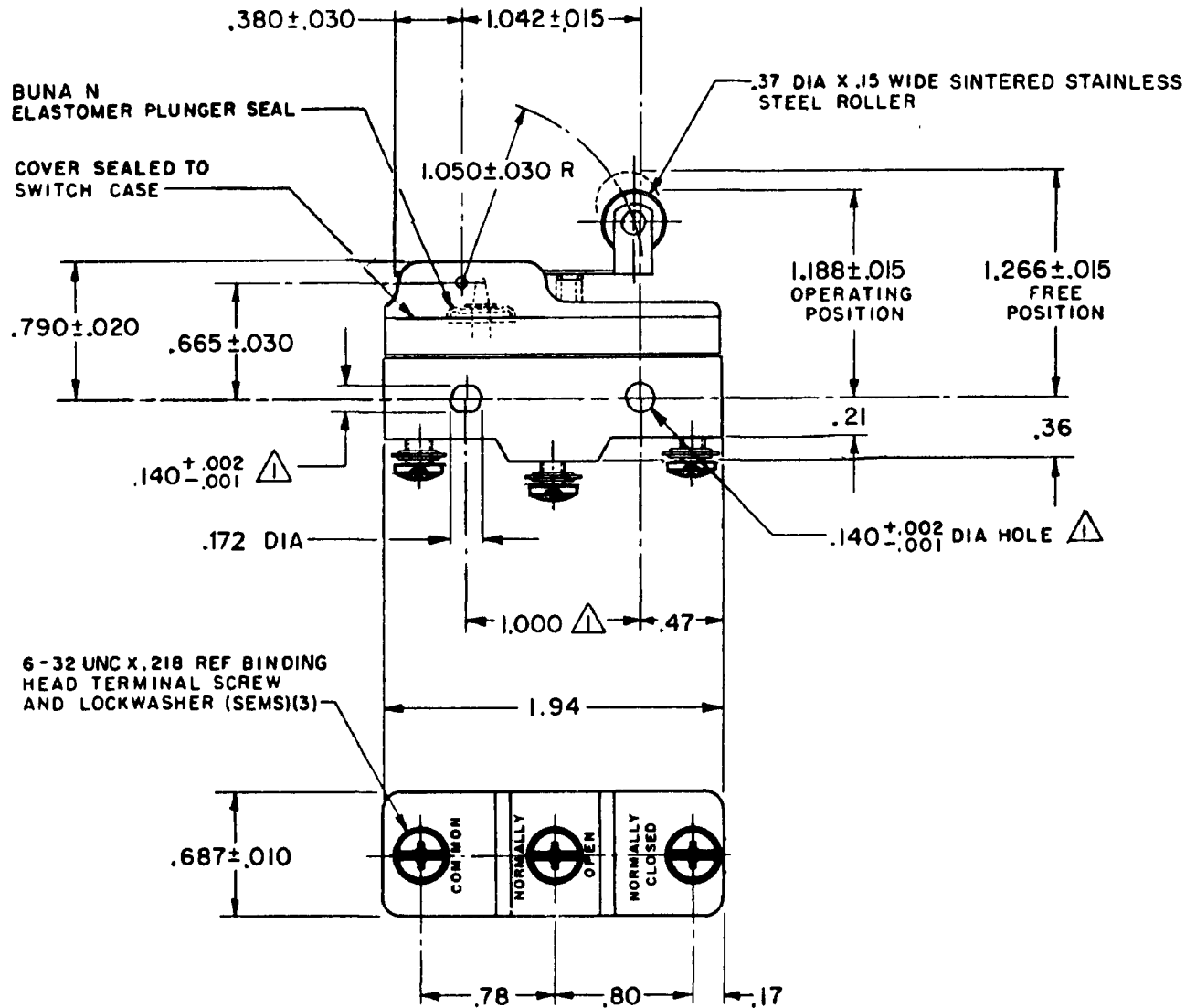
REVISIONS

A	CO-39621	J A P	3 MAY 90
T M M	16 DEC 77		
B	CO67209	J A P	3 MAY 90
C	CO-68351-D	J W B	18 JUL 91
D	CO-70184-H	D A W	1 FEB 94
E	CO-75204B	D A W	1 FEB 94
F	CO-77588	K D R	29 MAR 94
G	CO-82886	J A L A	23 APR 96
H	CO93346	D L T	17 SEP 98

CHECK

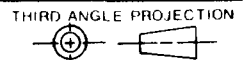
17 OCT 77

CHECK



- NOTES**
- 1 MOUNTING HOLES WILL ACCEPT PINS OR SCREWS OF .139 MAX DIA ON 1.000±.002 CENTERS
 - 2 - SEALED CONSTRUCTION PROVIDES SPLASH RESISTANCE

THIS DRAWING COVERS A PROPRIETARY ITEM AND IS THE PROPERTY OF MICRO SWITCH, A DIVISION OF HONEYWELL. THIS DRAWING IS NOT TO BE COPIED OR USED WITHOUT THE APPROVAL OF MICRO SWITCH.



CHARACTERISTICS

OPERATING FORCE — — 6 OZ MAX

RELEASE FORCE — — 1 1/2 OZ MIN

DIFFERENTIAL TRAVEL — .003— .020

OVERTRAVEL — — — .094 MIN

ELECTRICAL DATA

CONTACT ARRANGEMENT
S P D T

L96 15A 125, 250 OR 480 VAC
1/8 HP 125 VAC, 1/4 HP 250 VAC
1/2A 125 VDC, 1/4A 250 VDC

L288
L299
L306

CE Ⓣ UL

16A 250V ~ T85 5E4

SCALE FULL

DO NOT SCALE PRINT

APPLY TO DESIGN UNITS CONVERSIONS ARE ONLY FOR REFERENCE UNLESS NOTED TOLERANCES ARE ±

DIM.	TOL.	DIM.	TOL.
mm	mm/in	in	mm/in
NO PLACES	X	1/04	
ONE PLACE	X,X	0 4/ 016	X X 0 8/ 03
TWO PLACES	X,XX	0 15/ 006	X XX 0 38/ 015
THREE PLACES	X,XXX		X XXX 0 13/ 005
ANGLES			

DESIGN UNITS SI METRIC US CUSTOMARY

WEIGHT .079

FORMTEK
FO-52848-A
DRAWN

T M M 12 OCT 77 CHECK GLH