

**MICRO SWITCH**

A DIVISION OF MINNEAPOLIS-HONEYWELL REGULATOR COMPANY  
FREEPORT, ILLINOIS

FED. MFR. CODE 91929

**SWITCH - BASIC**

(M) ISE3-3  
ISSUE 4

ISE3-3

PAGE 1 OF 1

M

DRAWING NUMBER

ISSUE 78

REPLACES

RELEASE NO.

CHECK

REVISIONS

A	CO16449
R G C	
2 MARCH 82	
B	CO-34213
J A L	
24 SEPT 74	
C	CO 51463-D
WJM	
16 JUL 82	
D	CO57041A
CJH	
21 MAR 85	
E	CO94274
DLM	
MAR 99	

CHECK

CHECK

7 MAR 82

DRAW

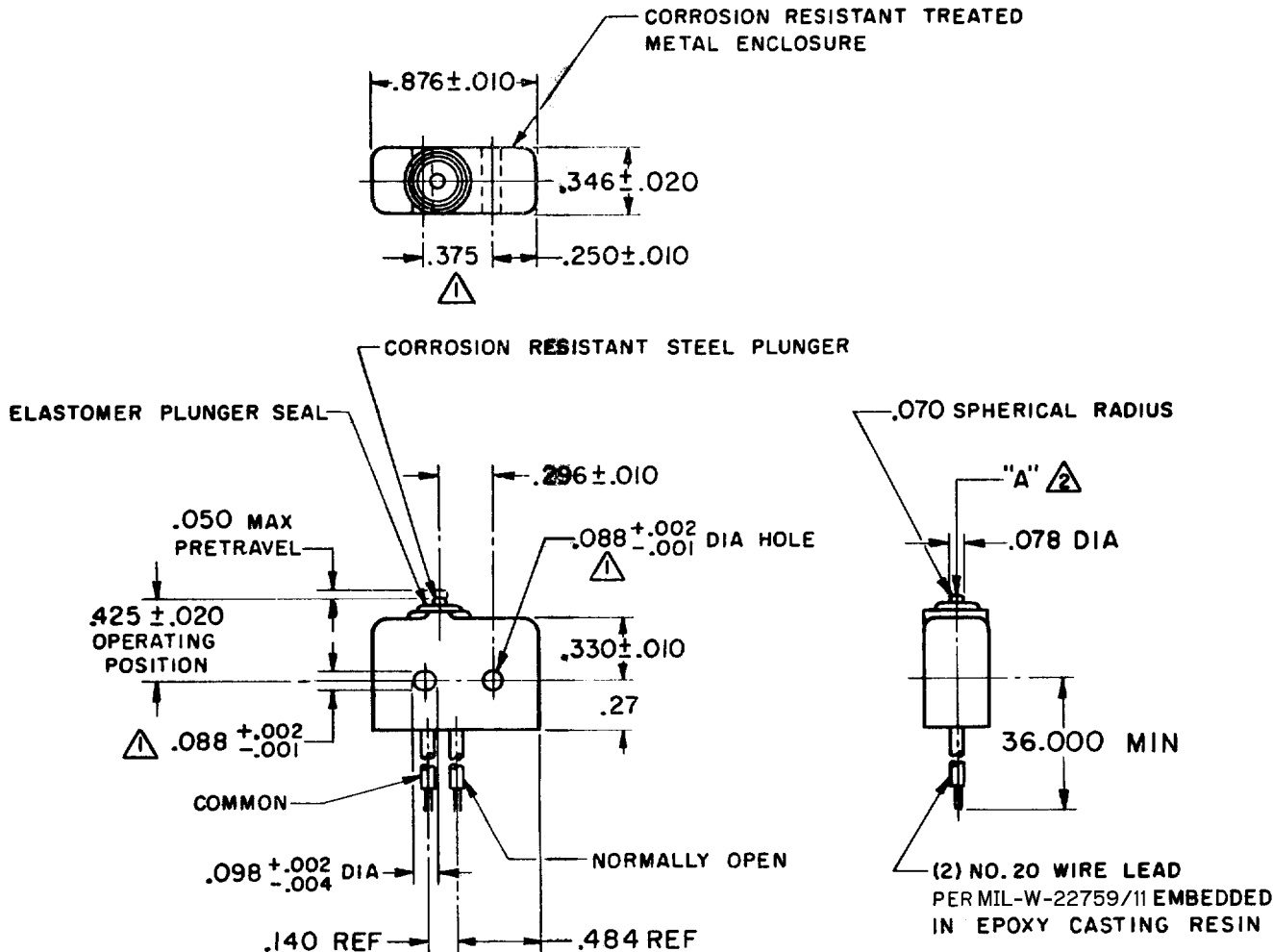
CHECK

2 MARCH 1962

CHECK

FORMTEK

FO-50378



NOTE -

- 1 - MOUNTING HOLES WILL ACCEPT  $.007$  MAX DIA PINS OR SCREWS ON  $.375 \pm .002$  CENTERS
- 2 - ACTUATION IN LINE WITH ARROW "A" IS RECOMMENDED
- 3 - WEIGHT OF SWITCH ONLY IS  $.26$  OZ MAX. WEIGHT OF SWITCH WITH WIRE LEADS IS  $1.00$  OZ MAX

THIS DRAWING COVERS A PROPRIETARY ITEM AND IS THE PROPERTY OF MICRO SWITCH, A DIVISION OF MINNEAPOLIS-HONEYWELL REGULATOR CO. THIS DRAWING IS NOT TO BE COPIED OR USED WITHOUT THE APPROVAL OF MICRO SWITCH.

CHARACTERISTICS	ELECTRICAL DATA	SCALE FULL
OPERATING FORCE — — — 5-17 OZ	CONTACT ARRANGEMENT S P N O	DO NOT SCALE PRINT
RELEASE FORCE — — — 4 OZ MIN	250 VAC — — — — — 5 AMP	UNLESS OTHERWISE SPECIFIED DIMENSIONS ARE IN INCHES <b>TOLERANCES ARE:</b>
RELEASE TRAVEL — — — .004 MIN	30 VOLTS DC RATING	
DIFFERENTIAL TRAVEL — — — .004 MAX	INDUCTIVE — — — SEA LEVEL — — — 3 AMP	ONE PLACE (.0) $\pm .030$
OVERTRAVEL — — — .003 MIN	50,000 FT — — — 2.5 AMP	TWO PLACE (.00) $\pm .015$
	RESISTIVE — — — SEA LEVEL — — — 5 AMP	THREE PLACE (.000) $\pm .008$
	50,000 FT — — — 5 AMP	ANGLES $\pm$
	MAXIMUM INRUSH — — — — — 24 AMP	WEIGHT $\pm$