

Printed-circuit board connector - IPC 35 HC/ 2-STF-15,00 - 1784790

Please be informed that the data shown in this PDF Document is generated from our Online Catalog. Please find the complete data in the user's documentation. Our General Terms of Use for Downloads are valid (<http://phoenixcontact.com/download>)

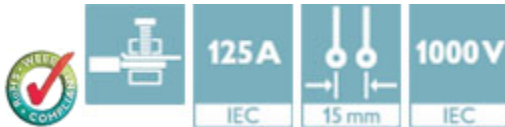
Plug component, Nominal current: 125 A, Rated voltage (III/2): 1000 V, Number of positions: 2, Pitch: 15 mm, Connection method: Screw connection with tension sleeve, Color: green, Contact surface: Silver



The figure shows a 5-pos. version of the product

Product Features

- Well-known connection principle allows worldwide use
- Low temperature rise, thanks to maximum contact force
- Allows connection of two conductors
- Inverted connector with pin contacts for touch-proof device outputs or free-hanging cable/cable connections
- Screwable flange for superior mechanical stability



Key Commercial Data

| | |
|--------------------------------------|----------|
| Packing unit | 1 pc |
| Minimum order quantity | 25 pc |
| Weight per Piece (excluding packing) | 72.0 g |
| Custom tariff number | 85366990 |
| Country of origin | Poland |

Technical data

Dimensions

| | |
|-------------|----------|
| Length | 58 mm |
| Height | 40 mm |
| Pitch | 15.00 mm |
| Dimension a | 15 mm |

General

| | |
|-------------------|------------------|
| Range of articles | IPC 35 HC/...STF |
|-------------------|------------------|

Printed-circuit board connector - IPC 35 HC/ 2-STF-15,00 - 1784790

Technical data

General

| | |
|--|---|
| Insulating material group | I |
| Rated surge voltage (III/3) | 8 kV |
| Rated surge voltage (III/2) | 8 kV |
| Rated surge voltage (II/2) | 8 kV |
| Rated voltage (III/3) | 1000 V |
| Rated voltage (III/2) | 1000 V |
| Rated voltage (II/2) | 1000 V |
| Connection in acc. with standard | EN-VDE |
| Nominal current I_N | 125 A |
| Nominal cross section | 35 mm ² |
| Maximum load current | 125 A |
| Insulating material | PA |
| Flammability rating according to UL 94 | V0 |
| Stripping length | 20 mm |
| Number of positions | 2 |
| Screw thread | M5 |
| Tightening torque, min | 2.5 Nm |
| Tightening torque max | 4.5 Nm |
| Note | Tightening torque $\leq 25 \text{ mm}^2$ is 2.5 Nm, $> 25 \text{ mm}^2$ is 4.5 Nm |

Connection data

| | |
|---|---------------------|
| Conductor cross section solid min. | 0.5 mm ² |
| Conductor cross section solid max. | 35 mm ² |
| Conductor cross section flexible min. | 0.5 mm ² |
| Conductor cross section flexible max. | 35 mm ² |
| Conductor cross section flexible, with ferrule without plastic sleeve min. | 1 mm ² |
| Conductor cross section flexible, with ferrule without plastic sleeve max. | 35 mm ² |
| Conductor cross section flexible, with ferrule with plastic sleeve min. | 1.5 mm ² |
| Conductor cross section flexible, with ferrule with plastic sleeve max. | 35 mm ² |
| Conductor cross section AWG min. | 20 |
| Conductor cross section AWG max. | 2 |
| 2 conductors with same cross section, solid min. | 0.5 mm ² |
| 2 conductors with same cross section, solid max. | 6 mm ² |
| 2 conductors with same cross section, stranded min. | 0.5 mm ² |
| 2 conductors with same cross section, stranded max. | 6 mm ² |
| 2 conductors with same cross section, stranded, ferrules without plastic sleeve, min. | 0.5 mm ² |

Printed-circuit board connector - IPC 35 HC/ 2-STF-15,00 - 1784790

Technical data

Connection data

| | |
|---|---------------------|
| 2 conductors with same cross section, stranded, ferrules without plastic sleeve, max. | 4 mm ² |
| 2 conductors with same cross section, stranded, TWIN ferrules with plastic sleeve, min. | 0.5 mm ² |
| 2 conductors with same cross section, stranded, TWIN ferrules with plastic sleeve, max. | 6 mm ² |
| Minimum AWG according to UL/CUL | 16 |
| Maximum AWG according to UL/CUL | 2 |

Standards and Regulations

| | |
|--|--------|
| Connection in acc. with standard | EN-VDE |
| | UL |
| Flammability rating according to UL 94 | V0 |

Classifications

eCl@ss

| | |
|------------|----------|
| eCl@ss 4.0 | 272607xx |
| eCl@ss 4.1 | 27260701 |
| eCl@ss 5.0 | 27260701 |
| eCl@ss 5.1 | 27141190 |
| eCl@ss 6.0 | 27260704 |
| eCl@ss 7.0 | 27440402 |
| eCl@ss 8.0 | 27440309 |
| eCl@ss 9.0 | 27440309 |

ETIM

| | |
|----------|----------|
| ETIM 4.0 | EC002638 |
| ETIM 5.0 | EC002638 |

UNSPSC

| | |
|---------------|----------|
| UNSPSC 6.01 | 30211810 |
| UNSPSC 7.0901 | 39121409 |
| UNSPSC 11 | 39121409 |
| UNSPSC 12.01 | 39121409 |
| UNSPSC 13.2 | 39121409 |

Approvals

Approvals

Printed-circuit board connector - IPC 35 HC/ 2-STF-15,00 - 1784790

Approvals

Approvals

UL Recognized / VDE Gutachten mit Fertigungsüberwachung / CCA / IEC EE CB Scheme / EAC / EAC

Ex Approvals

Approvals submitted

Approval details

| | | |
|--------------------------------|-------|-------|
| UL Recognized | | |
| | B | C |
| mm ² /AWG/kcmil | 16-2 | 16-2 |
| Nominal current I _N | 115 A | 115 A |
| Nominal voltage U _N | 600 V | 600 V |

| | |
|---|--------|
| VDE Gutachten mit Fertigungsüberwachung | |
| | |
| mm ² /AWG/kcmil | 0.5-35 |
| Nominal current I _N | 125 A |
| Nominal voltage U _N | 1000 V |

CCA

| | |
|--------------------------------|--------|
| IECEE CB Scheme | |
| | |
| Nominal current I _N | 125 A |
| Nominal voltage U _N | 1000 V |

EAC

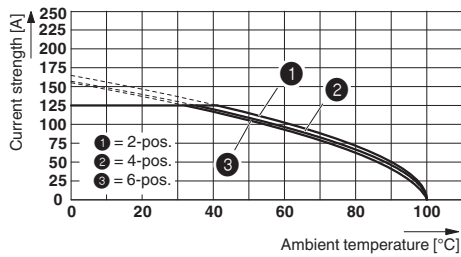
Printed-circuit board connector - IPC 35 HC/ 2-STF-15,00 - 1784790

Approvals

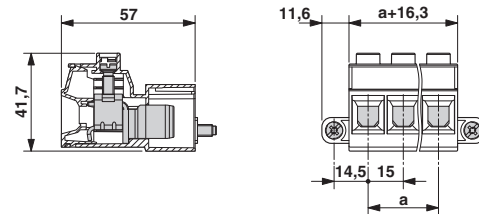
EAC

Drawings

Diagram



Dimensional drawing



Derating curve for: IPC 35 HC/...-STF-15,0 with IPC 35 HC/...-GF-15,0