

Surge protection device - C-TV-SAT - 2856993

Please be informed that the data shown in this PDF Document is generated from our Online Catalog. Please find the complete data in the user's documentation. Our General Terms of Use for Downloads are valid (<http://phoenixcontact.com/download>)




Attachment plug with surge protection for antenna inputs with F connector

Why buy this product

- Protective adapter for antenna connections
- TV or F connector
- Use on broadband cable or SAT connection

Key Commercial Data

Packing unit	1 STK
GTIN	 4 017918 915179

Technical data

Dimensions

Height	44 mm
Width	28 mm
Depth	66 mm

Ambient conditions

Ambient temperature (operation)	-25 °C ... 75 °C
Degree of protection	IP20

General

Housing material	PA
Flammability rating according to UL 94	V0
Color	black
Standards for clearances and creepage distances	DIN VDE 0110-1
	IEC 60664-1
Overvoltage category	II
Degree of pollution	2
Mounting type	Connection-specific intermediate plugging
Type	Attachment plug
Number of positions	1

Surge protection device - C-TV-SAT - 2856993

Technical data

General

Direction of action	Line-Shield/Earth Ground
---------------------	--------------------------

Protective circuit

IEC test classification	C1
	C2
	C3
	D1
Maximum continuous voltage U_c	180 V DC
	130 V AC
Maximum continuous voltage U_c (wire-shield)	180 V DC
Nominal current I_N	1.5 A (25 °C)
Operating effective current I_c at U_c	$\leq 1 \mu A$
Nominal discharge current I_n (8/20) μs (Core-Shield)	2.5 kA
Total surge current (8/20) μs	2.5 kA
Nominal pulse current I_{an} (10/1000) μs (Core-Shield)	120 A
Output voltage limitation at 1 kV/ μs (Core-Shield) spike	$\leq 600 V$
Output voltage limitation at 1 kV/ μs (Core-Shield) static	$\leq 600 V$
Residual voltage at I_n (conductor-shield)	$\leq 30 V$
Voltage protection level U_p (core-shield)	$\leq 700 V$ (C2 - 4 kV/2 kA)
Response time t_A (Core-GND)	$\leq 100 ns$
Input attenuation aE , asym.	0.5 dB ($\leq 2.4 GHz$)
Cut-off frequency f_g (3 dB), asym. (shield) in 75 Ohm system	$> 3 GHz$
Frequency range	4.7 MHz ... 2.5 GHz
Capacity asymmetrical (shield)	typ. 10 pF
Impulse durability (conductor-shield)	C2 - 4 kV/2 kA
	C3 - 100 A
	D1 (500 A)
Alternating current carrying capacity (conductor-shield)	5 A - 1 s

Connection data

Connection method	F connector
Connection type IN	F connector, female
Connection type OUT	F connector, female

Standards and Regulations

Standards/regulations	IEC 61643-21
	EN 50083 - CLASS A

Classifications

eCl@ss

eCl@ss 4.0	27140201
------------	----------

Surge protection device - C-TV-SAT - 2856993

Classifications

eCl@ss

eCl@ss 4.1	27130801
eCl@ss 5.0	27130801
eCl@ss 5.1	27130801
eCl@ss 6.0	27130807
eCl@ss 7.0	27130807
eCl@ss 8.0	27130807
eCl@ss 9.0	27130807

ETIM

ETIM 2.0	EC000943
ETIM 3.0	EC000943
ETIM 4.0	EC000943
ETIM 5.0	EC000943

UNSPSC

UNSPSC 6.01	30212010
UNSPSC 7.0901	39121610
UNSPSC 11	39121610
UNSPSC 12.01	39121610
UNSPSC 13.2	39121620

Approvals

Approvals

Approvals

EAC

Ex Approvals

Approvals submitted

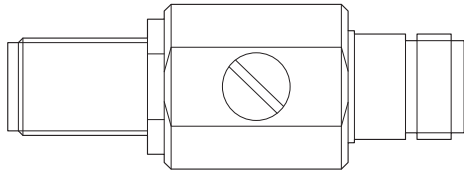
Approval details

EAC

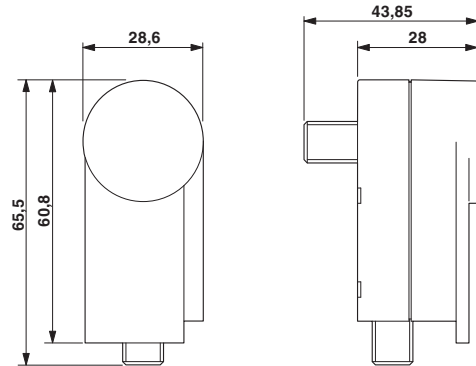
Drawings

Surge protection device - C-TV-SAT - 2856993

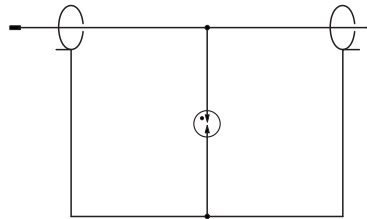
Product drawing



Dimensional drawing



Circuit diagram



Phoenix Contact 2016 © - all rights reserved
<http://www.phoenixcontact.com>

PHOENIX CONTACT GmbH & Co. KG
Flachsmarktstr. 8
32825 Blomberg
Germany
Tel. +49 5235 300
Fax +49 5235 3 41200
<http://www.phoenixcontact.com>