

Relay Module - EMG 10-REL/KSR-230/21-LC - 2964380

Please be informed that the data shown in this PDF Document is generated from our Online Catalog. Please find the complete data in the user's documentation. Our General Terms of Use for Downloads are valid (<http://phoenixcontact.com/download>)



Relay module, with soldered-in miniature switching relay, contact (AgNi): Medium to large loads, 1 PDT, input voltage 230 V AC/DC


The figure shows the EMG 10-REL/KSR-G 24/21-LC variant

Why buy this product

- Safe isolation according to DIN EN 50178 between coil and contact
- Integrated input circuit and interference suppression circuit



Key Commercial Data

| | |
|--------------|---|
| Packing unit | 10 STK |
| GTIN |  4 017918 107444 |

Technical data

Note

| | |
|-------------------------|---|
| Utilization restriction | EMC: class A product, see manufacturer's declaration in the download area |
|-------------------------|---|

Dimensions

| | |
|--------|---------|
| Width | 10.6 mm |
| Height | 75 mm |
| Depth | 62.5 mm |

Ambient conditions

| | |
|---|------------------|
| Ambient temperature (operation) | -20 °C ... 40 °C |
| Ambient temperature (storage/transport) | -20 °C ... 70 °C |

Coil side

| | |
|---|-------------|
| Nominal input voltage U_N | 230 V AC/DC |
| Input voltage range in reference to U_N | 0.8 ... 1.1 |
| Typical input current at U_N | 5 mA |

Relay Module - EMG 10-REL/KSR-230/21-LC - 2964380

Technical data

Coil side

| | |
|---|-----------------------------------|
| Typical response time | 7 ms |
| Typical release time | 11 ms |
| Protective circuit | Bridge rectifier Bridge rectifier |
| | Surge protection Varistor |
| Operating voltage display | Yellow LED |
| Power dissipation for nominal condition | 1.15 W |

Contact side

| | |
|---------------------------------------|------------------------|
| Contact type | Single contact, 1-PDT |
| Contact material | AgNi |
| Maximum switching voltage | 250 V AC/DC |
| Maximum inrush current | 8 A |
| Limiting continuous current | 6 A |
| Interrupting rating (ohmic load) max. | 140 W (at 24 V DC) |
| | 53 W (at 48 V DC) |
| | 45 W (at 60 V DC) |
| | 35 W (at 110 V DC) |
| | 55 W (at 220 V DC) |
| | 1500 VA (for 250 V AC) |

General

| | |
|--|--------------------------------|
| Test voltage relay winding/relay contact | 4 kV AC (50 Hz, 1 min.) |
| Operating mode | 100% operating factor |
| Mechanical service life | Approx. 2×10^7 cycles |
| Standards/regulations | IEC 60664 |
| | EN 50178 |
| | IEC 62103 |
| Rated surge voltage/insulation | Basic insulation |
| Degree of pollution | 2 |
| Overvoltage category | III |
| Mounting position | any |
| Assembly instructions | In rows with zero spacing |

Connection data input side

| | |
|----------------------------------|---|
| Connection name | Coil side |
| Connection method | Screw connection |
| Stripping length | 8 mm |
| Screw thread | M3 |
| Conductor cross section solid | 0.2 mm ² ... 4 mm ² |
| Conductor cross section flexible | 0.2 mm ² ... 2.5 mm ² |
| Conductor cross section AWG | 24 ... 12 |

Connection data output side

Relay Module - EMG 10-REL/KSR-230/21-LC - 2964380

Technical data

Connection data output side

| | |
|----------------------------------|---|
| Connection name | Contact side |
| Connection method | Screw connection |
| Stripping length | 8 mm |
| Screw thread | M3 |
| Conductor cross section solid | 0.2 mm ² ... 4 mm ² |
| Conductor cross section flexible | 0.2 mm ² ... 2.5 mm ² |
| Conductor cross section AWG | 24 ... 12 |

Standards and Regulations

| | |
|----------------------------------|------------------|
| Connection in acc. with standard | CUL |
| Standards/regulations | IEC 60664 |
| | EN 50178 |
| | IEC 62103 |
| Rated surge voltage/insulation | Basic insulation |
| Degree of pollution | 2 |
| Overvoltage category | III |

Classifications

eCl@ss

| | |
|------------|----------|
| eCl@ss 4.0 | 27371102 |
| eCl@ss 4.1 | 27371102 |
| eCl@ss 5.0 | 27371001 |
| eCl@ss 5.1 | 27371001 |
| eCl@ss 6.0 | 27371001 |
| eCl@ss 7.0 | 27371001 |
| eCl@ss 8.0 | 27371601 |
| eCl@ss 9.0 | 27371601 |

ETIM

| | |
|----------|----------|
| ETIM 2.0 | EC000196 |
| ETIM 3.0 | EC000196 |
| ETIM 4.0 | EC000196 |
| ETIM 5.0 | EC001437 |

UNSPSC

| | |
|---------------|----------|
| UNSPSC 6.01 | 30211916 |
| UNSPSC 7.0901 | 39121515 |
| UNSPSC 11 | 39121515 |
| UNSPSC 12.01 | 39121515 |
| UNSPSC 13.2 | 39121515 |

Relay Module - EMG 10-REL/KSR-230/21-LC - 2964380

Approvals

Approvals

Approvals

UL Recognized / cUL Recognized / EAC / EAC / cULus Recognized

Ex Approvals

Approvals submitted

Approval details

UL Recognized

cUL Recognized

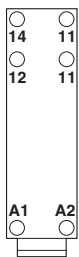
EAC

EAC

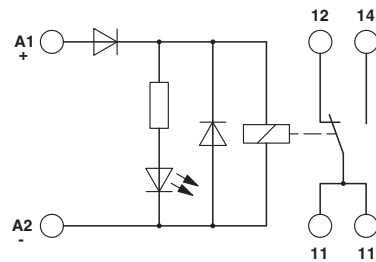
cULus Recognized

Drawings

Connection diagram



Circuit diagram



Phoenix Contact 2016 © - all rights reserved
<http://www.phoenixcontact.com>

PHOENIX CONTACT GmbH & Co. KG
Flachmarktstr. 8
32825 Blomberg
Germany
Tel. +49 5235 300
Fax +49 5235 3 41200
<http://www.phoenixcontact.com>