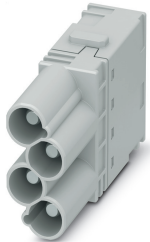


Contact insert module - HC-M-04-PT-M - 1424221


Please be informed that the data shown in this PDF Document is generated from our Online Catalog. Please find the complete data in the user's documentation. Our General Terms of Use for Downloads are valid (<http://phoenixcontact.com/download>)



Contact insert module, number of positions: 4, power contacts: 4, control contacts: 0, Pin, Push-in connection, 830 V, 40 A, 2.5 mm² ... 6 mm², application: Power



Key Commercial Data

Packing unit	1 pc
GTIN	 4 055626 369525
GTIN	4055626369525
Weight per Piece (excluding packing)	40.000 g
Custom tariff number	85366990
Country of origin	China

Technical data

Electrical characteristics

Rated voltage (III/3)	830 V
Rated voltage (III/2)	1000 V
Rated current	40 A
Rated surge voltage	8 kV
Rated surge voltage (III/2)	8 kV
Rated surge voltage (III/3)	8 kV
Connection profile	4

Ambient conditions

Ambient temperature (operation)	-40 °C ... 125 °C
---------------------------------	-------------------

Mechanical characteristics

Contact insert module - HC-M-04-PT-M - 1424221

Technical data

Mechanical characteristics

Conductor cross section	2.5 mm ² ... 6 mm ²
Connection cross section AWG	14 ... 10
Stripping length of the individual wire	9.6 mm
Contact diameter	4 mm
Minimum housing height	72 mm

General

Note	for flexible conductors with or without ferrules
	Connectors may be operated only when there is no load/voltage.
	For HEAVYCON housing type B6 ... B48 and module carrier frame HC-M-B...MF-...
Number of module slots	1
Connection method	Push-in connection
Connection in acc. with standard	IEC / EN
Contact type	rolled
Flammability rating according to UL 94	V0
Degree of pollution	3
Overvoltage category	III
Assembly instructions	To ensure correct use, installation in housing with IP54 protection or better is required
Contact carrier type	modular

Material data

Contact material	Copper alloy
Contact surface material	Ag
Contact carrier material	PC

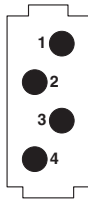
Standards and Regulations

Flammability rating according to UL 94	V0
--	----

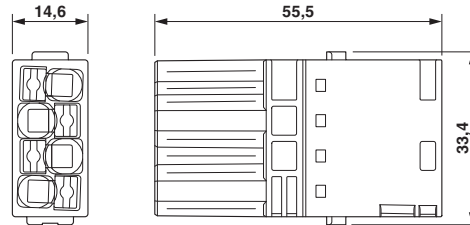
Drawings

Contact insert module - HC-M-04-PT-M - 1424221

Schematic diagram



Dimensional drawing



Connector pin assignment, connection side

Classifications

eCl@ss

eCl@ss 10.0.1	27440217
eCl@ss 11.0	27440217
eCl@ss 9.0	27440217

Accessories

Accessories

Crimping tool

Crimping pliers - CRIMPFOX CENTRUS 6S - 1213144



Crimping pliers, for uninsulated and insulated ferrules, DIN 46228 Part 1 and 4, from 0.14 mm² ... 6 mm², also for TWIN ferrules up to 2 x 4 mm², automatic cross section adjustment, lateral insertion, equipped with fall protection

Crimping pliers - CRIMPFOX CENTRUS 10S - 1213154



Crimping pliers, for uninsulated and insulated ferrules, DIN 46228 Part 1 and 4, from 0.14 mm² ... 10 mm², also for TWIN ferrules up to 2 x 4 mm², automatic cross section adjustment, lateral insertion, equipped with fall protection

Module carrier frame

Contact insert module - HC-M-04-PT-M - 1424221

Accessories

Module carrier frame - HC-M-B06-MFH-B - 1182085



Module carrier frame, size: B6, type : for the panel mounting side (a, b, c, ...), 4 mm² ... 6 mm², application: Module carrier frame

Module carrier frame - HC-M-B10-MFH-B - 1182088



Module carrier frame, size: B10, type : for the panel mounting side (a, b, c, ...), 4 mm² ... 6 mm², application: Module carrier frame

Module carrier frame - HC-M-B16-MFH-B - 1182090



Module carrier frame, size: B16, type : for the panel mounting side (a, b, c, ...), 4 mm² ... 6 mm², application: Module carrier frame

Module carrier frame - HC-M-B24-MFH-B - 1182094



Module carrier frame, size: B24, type : for the panel mounting side (a, b, c, ...), 4 mm² ... 6 mm², application: Module carrier frame

Module carrier frame - HC-M-B06-MFH-H - 1182087



Module carrier frame, size: B6, type : for the sleeve side (A, B, C, ...), 4 mm² ... 6 mm², application: Module carrier frame

Contact insert module - HC-M-04-PT-M - 1424221

Accessories

Module carrier frame - HC-M-B10-MFH-H - 1182089



Module carrier frame, size: B10, type : for the sleeve side (A, B, C, ...), 4 mm² ... 6 mm², application: Module carrier frame

Module carrier frame - HC-M-B16-MFH-H - 1182093



Module carrier frame, size: B16, type : for the sleeve side (A, B, C, ...), 4 mm² ... 6 mm², application: Module carrier frame

Module carrier frame - HC-M-B24-MFH-H - 1182095



Module carrier frame, size: B24, type : for the sleeve side (A, B, C, ...), 4 mm² ... 6 mm², application: Module carrier frame

Additional products

Contact insert module - HC-M-04-PT-F - 1424220



Contact insert module, number of positions: 4, power contacts: 4, control contacts: 0, Socket, Push-in connection, 830 V, 40 A, 2.5 mm² ... 6 mm², application: Power
