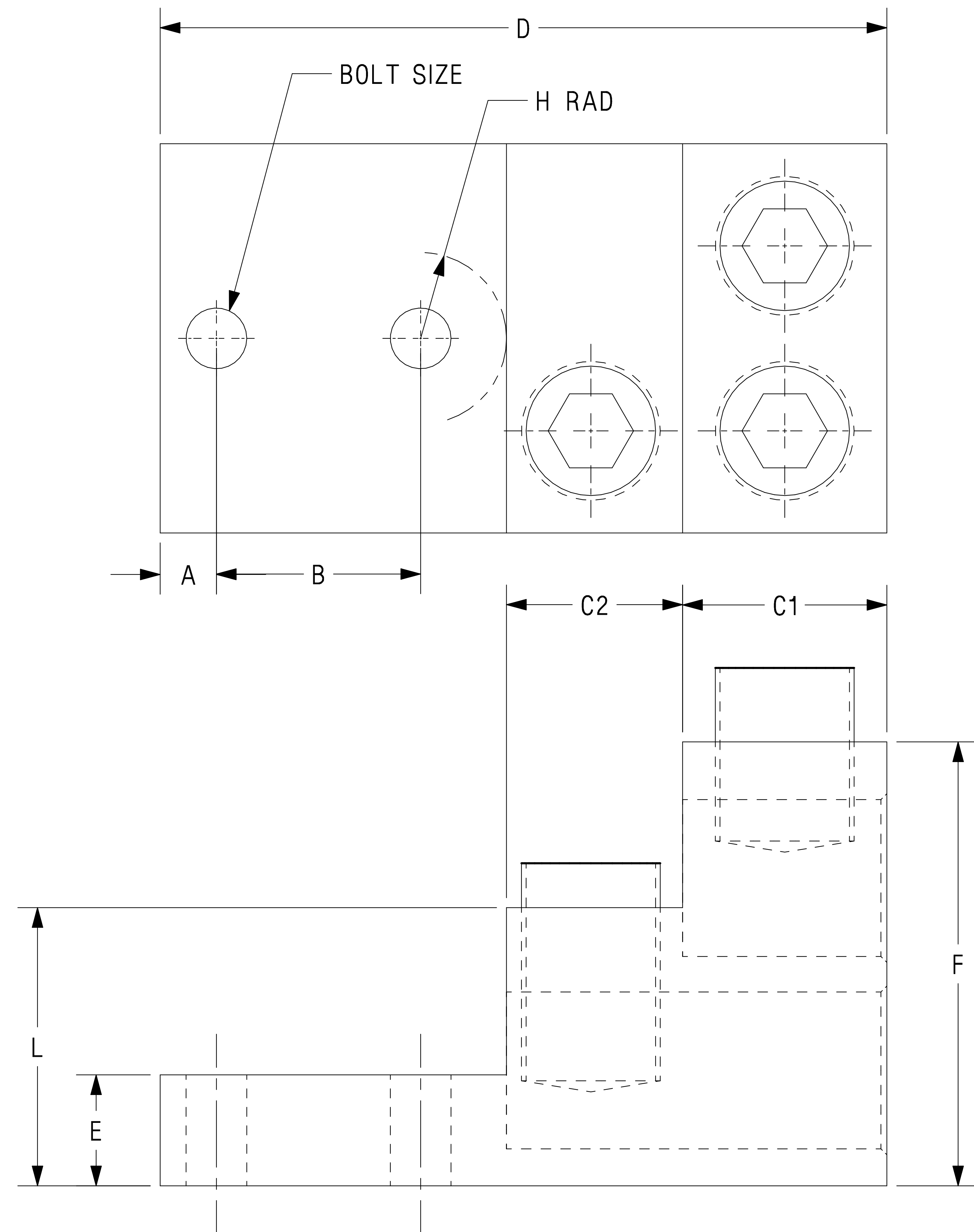
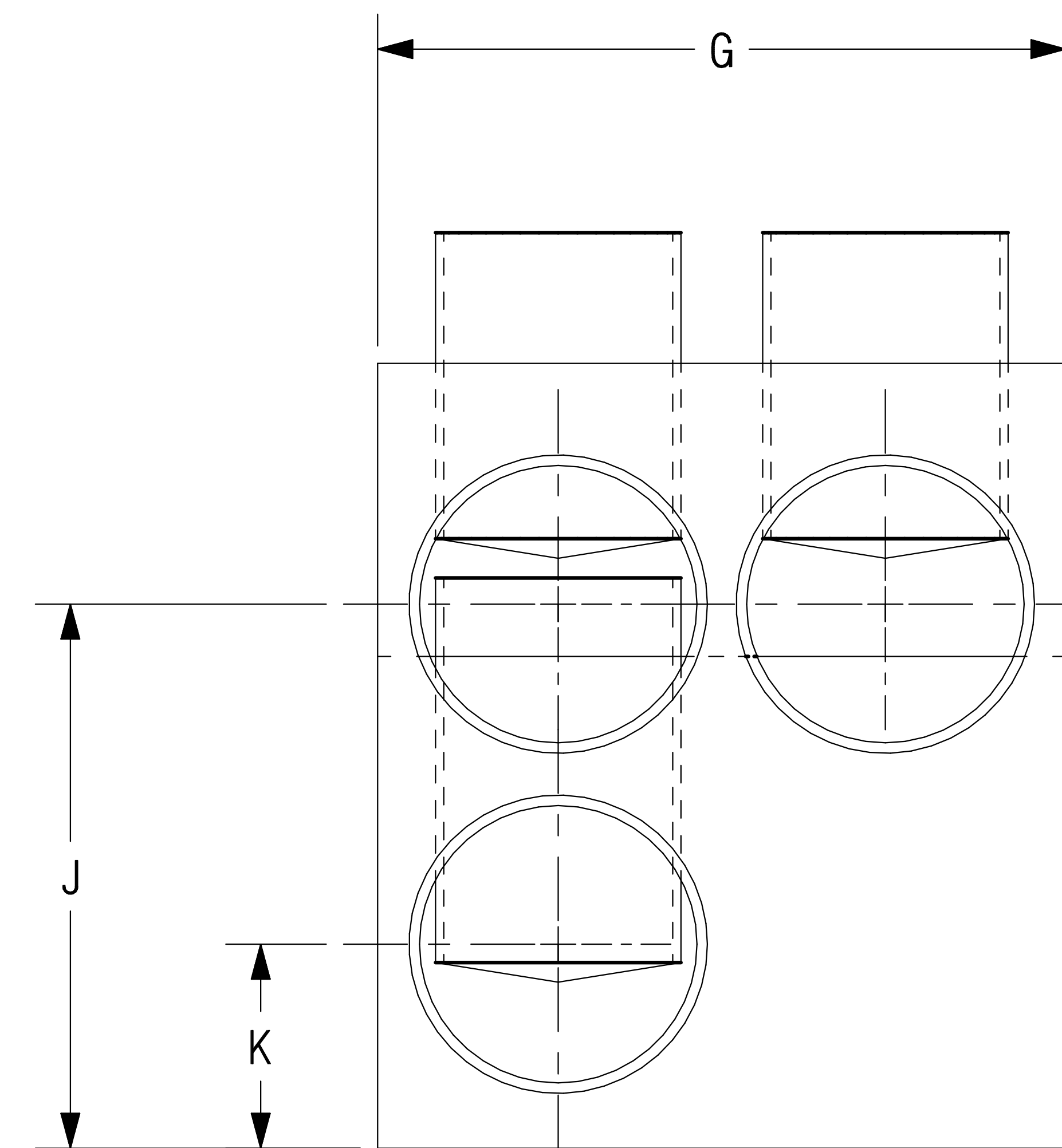


THIS COPY IS PROVIDED ON A RESTRICTED BASIS AND IS NOT TO BE USED IN ANY WAY DETRIMENTAL TO THE INTERESTS OF PANDUIT CORP.



NOTES:

1. PART AND SCREWS ARE TIN PLATED ALUMINUM.
2. MADE IN U.S.A.
3. TO BE USED WITH COPPER OR ALUMINUM STRANDED WIRE.
4. INSTALLATION TORQUE: 500 in-lbs (56.5 N-m)
5. 90° C TEMP. RATING
6. THIS PART IS ROHS COMPLIANT.



ALUMINUM MECHANICAL CONNECTOR TYPE: LAM3SB

CAT. NO.	WIRE RANGE COPPER/ALUMINUM	WIRE STRIP LEN. TOP HOLES IN. (mm)	WIRE STRIP LEN. BOT. HOLES IN. (mm)	BOLT SIZE IN.	DIM A IN.	DIM B IN.	DIM C1 IN.	DIM C2 IN.	DIM D IN.	DIM E IN.	DIM F IN.	DIM G IN.	DIM H IN. MAX	DIM J IN.	DIM K IN.	DIM L IN.	HEX KEY
LAM3SB600-38-1Y	600MCM-2AWG	1.38 (34.9)	2.57 (65.3)	3/8	.38	1.38	1.38	1.19	4.91	.75	3.00	2.47	.60	2.08	.78	1.88	1/2
LAM3SB750-38-1Y	750MCM-3/0AWG	1.38 (34.9)	2.57 (65.3)	3/8	.38	1.38	1.38	1.19	4.91	.75	3.00	2.63	.60	2.08	.78	1.88	1/2

C41563_01



CERTIFIED
LR31212



LISTED
486B

										<p>PANDUIT CORP TINLEY PARK, ILLINOIS</p> <p>CUSTOMER DWG TYPE LAM3SB</p> <p>UNLESS OTHERWISE SPECIFIED, DIMENSIONAL TOLERANCES ARE: (.X) ± --- (.XXX) ± --- (.XX) ± --- ANGLES ± ---</p> <p>UNLESS OTHERWISE SPECIFIED, ALL DIMENSIONS ARE GIVEN IN INCHES, THIRD ANGLE PROJECTION</p>								
01	3/06	JHNU	LEM	REVISED ROHS NOTE						PC00334	DRAWN BY JHNU		MAT'L:		SCALE NONE			
00	2/06	JHNU	LEM	DRAWING RELEASED - ROHS COMPLIANT						PC00299	DATE 2/06		SEE NOTES		DRAWING NO. C41563		DWG B SIZE	
REV	DATE	BY	CHK	DESCRIPTION						ECN #	PM	CUST	CHK'D					