



**Search Results**

- Evaluate
  - FAQ's
- Design a Solution
  - Part Drawings
  - PDF-Next Generat ..
- How to Buy
  - Bill of Material
  - Favorite Products List
  - Locate Distributor

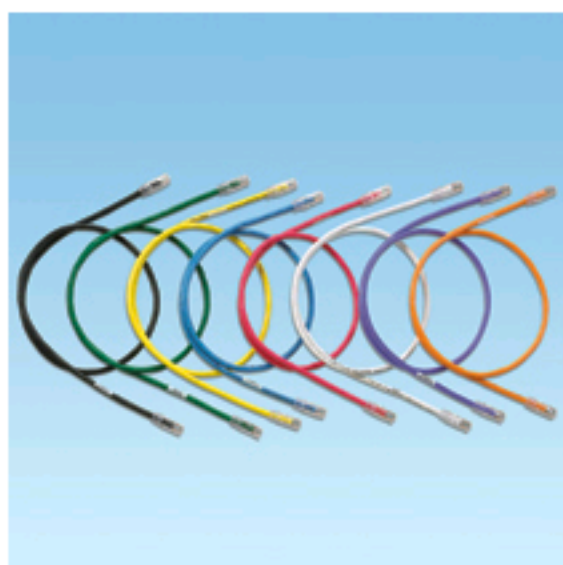
Home > Product On-Line Catalog > Search Results >

Current refinements (click  to remove) Search Tips

Text Search: 'UTP6A10GR'

Your search criteria matched only one product, shown below

**UTP6A10GR**



- Exceed requirements of ANSI/TIA-568-C.2 Category 6A, IEEE 802.3an-2006, and ISO 11801 Class E<sub>A</sub> channel standards
- Meet requirements of IEEE 802.3af and IEEE 802.3at for PoE applications
- Each patch cord is 100% performance tested and wired to T568B
- Constructed of TX6A™ 10Gig™ 24 AWG stranded copper cable (nominal cable diameter is 0.280 inches) and TX6™ PLUS Modular Plugs for superior performance
- Plug meets all applicable ANSI/TIA-968-A requirements and exceeds IEC 60603-7 specifications
- Slender strain relief boot provides easy access in high density applications
- Plug uses an integral pair manager to optimize performance and consistency by reducing untwisting of conductors within the plug
- Plug performance in center of TIA/EIA component range, ensuring interoperability and 10GBASE-T Ethernet channel performance
- Labels on patch cords provide identification of performance level, length, and quality control

number

- Patented tangle free latch prevents snags and provides easy release, saving time on frequent moves, adds, and changes
- Optional Patch Cord Color Bands snap on and off individual patch cables offering endless color-coding options

▪ Part Number	UTP6A10GR
▪ RoHS Compliancy Status	Compliant
▪ Part Description	Category 6A, 10 Gb/s UTP patch cord with TX6™ PLUS Modular Plugs on each end.
▪ Product Type	Copper Patch Cord
▪ Color	Green
▪ Length (ft.)	10
▪ Length (m)	3.05
▪ Boot Color	Clear
▪ Cable Color	Green
▪ Cable Type	UTP
▪ CE Compliant	No
▪ Connector 1 Type	RJ45 8(8)
▪ Connector 2 Type	RJ45 8(8)
▪ Flammability Rating	CM
▪ Performance Level	Category 6A
▪ Pricing Description	Copper Patch Cord, Cat 6A, Green UTP Cable, 10 Feet
▪ Termination End 1	Modular Plug
▪ Termination End 2	Modular Plug
▪ Wiring Scheme	T568B
▪ Min. Order UOM	PC
▪ Min. Order Qty.	1
▪ BOM Qty. (# of Pkgs.)	<input type="text" value="0"/>
▪ Add to Favorite Product List	<input type="checkbox"/>

Please [register](#) to utilize the 'Bill of Materials', 'Submit Quotes' and 'Favorite Product List' features.