

Search Results

Evaluate

- FAQ's

Design a Solution

- Part Drawings

- DWG-Drop Ceiling ..

- PDF-Drop Ceiling ..

- DWG-Drop Ceiling ..

- PDF-Drop Ceiling ..

How to Buy

- Bill of Material

- Favorite Products List

- Locate Distributor

Install & Maintain

- Installation Instructions

- PDF-PAN-WAY Surf ..

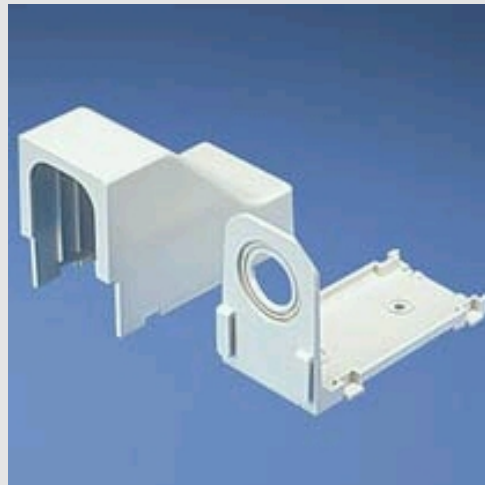
Home > Products Overview > Search Results >

Current refinements (click  to remove) Search Tips  Within Results

 Text Search: 'DCEFXEIX'


Your search criteria matched only one product, shown below

DCEFXEIX



Power Rated Fittings for Power to 600V - LDPH / LDS / LD2P Raceway Only

• One inch bend radius fittings are designed to maintain the TIA/EIA -568-B and 569-B required minimum bend radius for high performance copper and fiber optic cabling systems

Part Number	DCEFXEIX
RoHS Compliancy Status	Compliant
Part Description	Drop ceiling/entrance end fitting for use with LD3, LDPH3, LDS3, LD5, LDPH5, LDS5, LD10 and LDPH10 raceway. Use CA3 or CA5 adapters for LD3 or LD5 profile raceway.
Product Type	Power Rated Fittings
Color	Electric Ivory
Fitting Type	Drop Ceiling/Entrance End
Bend Radius Control	No
Pricing Description	Drop Ceiling/Entrance End Power Rated/ 1" BRC Fitting for LD/LDPH3,5,10 / LDS3,5
Product Size	10
Min. Order UOM	PC
Min. Order Qty.	10
BOM Qty. (# of Pkgs.)	<input type="text" value="0"/>
Add to Favorite Product List	

Please [register](#) to utilize the 'Bill of Materials', 'Submit Quotes' and 'Favorite Product List' features.