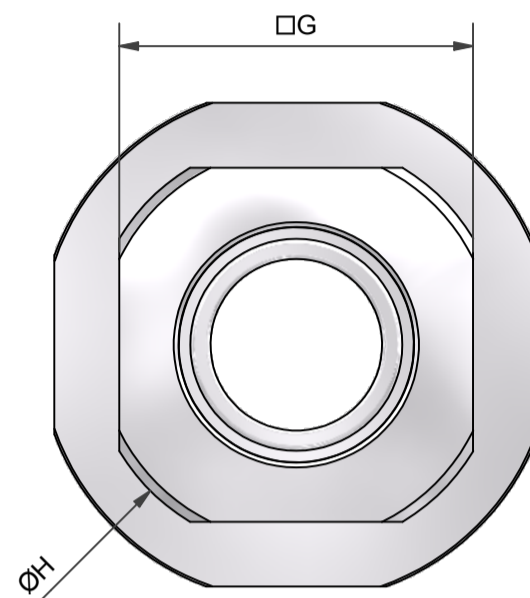
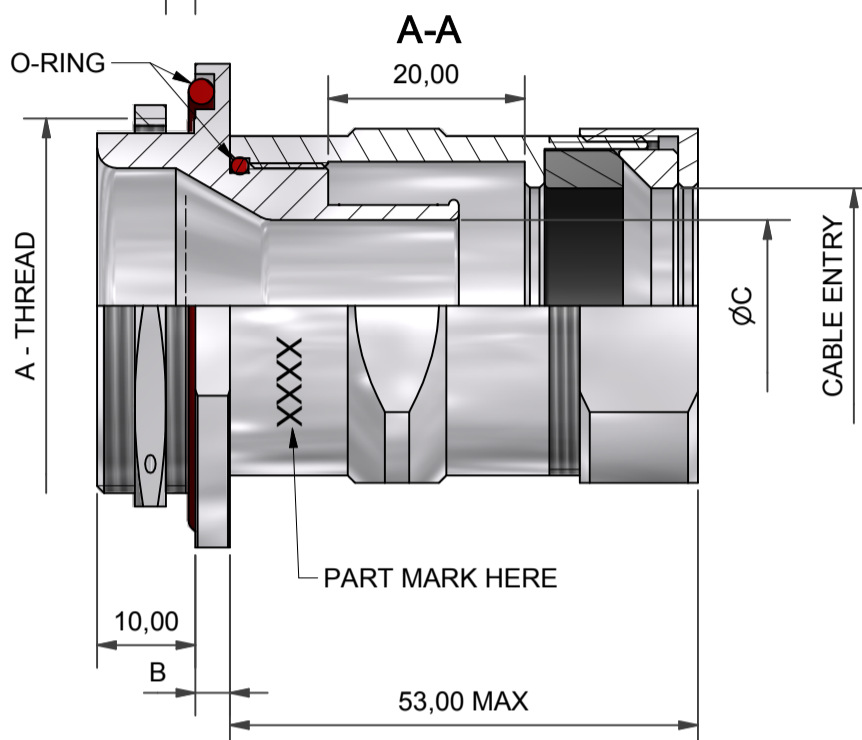
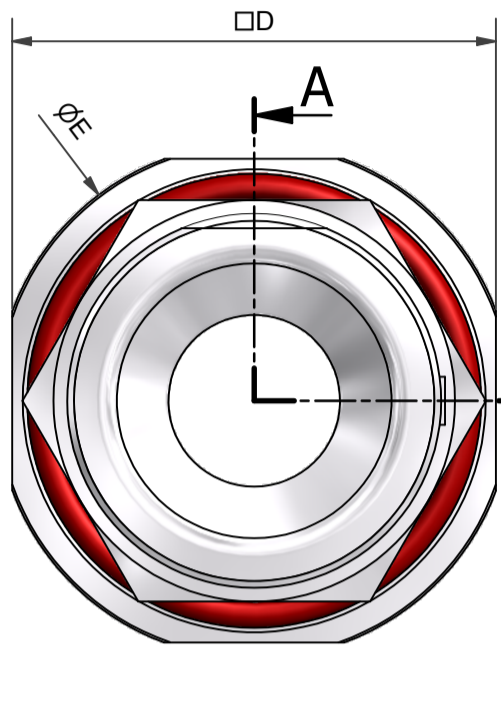
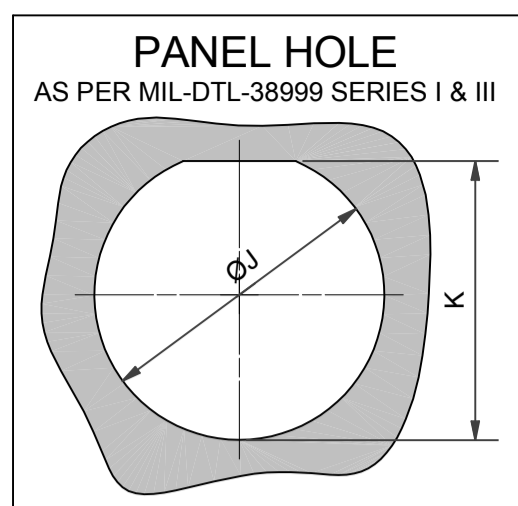
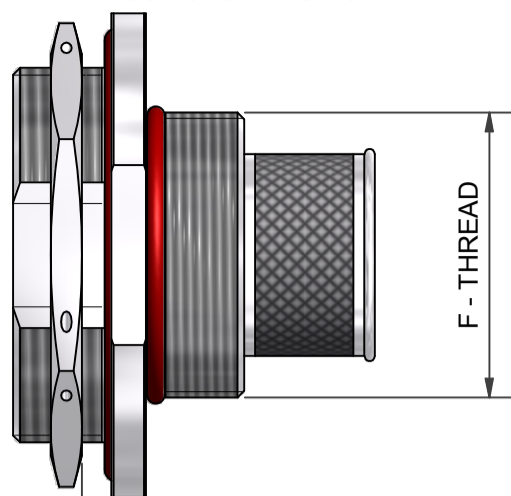


VIEW WITHOUT STUFFING BOX



| SHELL SIZE | A THREAD      | B   | D<br>±0,4 | E<br>±0,3 | J<br>+0,25/-0,00 | K<br>+0,00/-0,06 | MAX ENTRY |
|------------|---------------|-----|-----------|-----------|------------------|------------------|-----------|
| 09         | 11/16-24 UNEF | 2,7 | 27,0      | 30,2      | 17,60            | 16,70            | 08        |
| 11         | 13/16-20 UNEF | 2,7 | 31,8      | 34,9      | 20,96            | 19,59            | 10        |
| 13         | 1-20 UNEF     | 2,7 | 34,9      | 38,1      | 25,65            | 24,26            | 13        |
| 15         | 1 1/8-18 UNEF | 2,7 | 38,1      | 41,3      | 28,83            | 27,56            | 15        |
| 17         | 1 1/4-18 UNEF | 2,7 | 41,3      | 44,5      | 32,01            | 30,73            | 18        |
| 19         | 1 3/8-18 UNEF | 3,5 | 46,0      | 49,2      | 35,18            | 33,91            | 18        |
| 21         | 1 1/2-18 UNEF | 3,5 | 49,2      | 52,4      | 38,35            | 37,08            | 18        |
| 23         | 1 5/8-18 UNEF | 3,5 | 52,4      | 55,6      | 41,53            | 40,26            | 18        |
| 25         | 1 3/4-18 UNEF | 3,5 | 55,6      | 58,7      | 44,70            | 43,43            | 18        |

| ENTRY SIZE | F<br>THREAD | C<br>MIN | G  | H    | CABLE ENTRY |
|------------|-------------|----------|----|------|-------------|
| 03         | M18 X 1     | 4,7      | 22 | 25,4 | 6,6 - 10,6  |
| 04         | M18 X 1     | 6,3      | 22 | 25,4 | 6,6 - 10,6  |
| 05         | M19 X 1     | 7,9      | 25 | 29,0 | 10,1 - 12,0 |
| 06         | M23 X 1     | 9,5      | 28 | 32,0 | 10,8 - 16,3 |
| 07         | M23 X 1     | 11,1     | 28 | 32,0 | 10,8 - 16,3 |
| 08         | M23 X 1     | 12,7     | 28 | 32,0 | 10,8 - 16,3 |
| 09         | M26 X 1     | 14,2     | 33 | 38,0 | 14,6 - 19,8 |
| 10         | M26 X 1     | 15,8     | 33 | 38,0 | 14,6 - 19,8 |
| 11         | M29 X 1     | 17,4     | 36 | 42,0 | 18,5 - 24,0 |
| 12         | M29 X 1     | 19,0     | 36 | 42,0 | 18,5 - 24,0 |
| 13         | M29 X 1     | 20,6     | 36 | 42,0 | 18,5 - 24,0 |
| 14         | M34 X 1     | 22,2     | 38 | 44,0 | 22,0 - 25,0 |
| 15         | M34 X 1     | 23,8     | 38 | 44,0 | 22,0 - 25,0 |
| 16         | M37 X 1     | 25,4     | 42 | 49,0 | 26,0 - 28,6 |
| 17         | M39 X 1     | 27,0     | 46 | 50,0 | 32,0 - 35,0 |
| 18         | M40 X 1     | 28,6     | 48 | 55,0 | 33,0 - 36,0 |

| MATERIAL/PLATING |  |
|------------------|--|
| 1-B              | ALUMINIUM/CADMIUM OLIVE DRAB OVER ELECTROLESS NICKEL           |
| 1-C              | ALUMINIUM/ELECTROLESS NICKEL                                   |
| 4-J              | STAINLESS STEEL/PASSIVATE                                      |
| 2-Z              | NICKEL ALUMINIUM BRONZE/SHOT BLASTED FOR NON-REFLECTIVE FINISH |

\* NOTE:

- MATERIAL / PLATING  
OTHER OPTIONS AVAILABLE  
- PLEASE CONSULT SALES OFFICE FOR DETAILS

|           |   |
|-----------|---|
| 100P3230= | POLAMCO SERIES                            |
| 21=       | SHELL SIZE (SEE TABLE 1)                  |
| 11=       | ENTRY SIZE (SEE TABLE 2)                  |
| 1=        | MATERIAL: ALUMINIUM (SEE TABLE 3)         |
| C=        | PLATING: ELECTROLESS NICKEL (SEE TABLE 3) |

|  |  |   |   |                       |  |
|--|--|---|---|-----------------------|--|
| <b>DRAWN</b><br>W.RUST<br>DATE<br>02/03/2012 | <b>SALES APPR</b><br>J-L.MODJTABAI<br>DATE<br>02/03/2012 | <p>3RD ANGLE PROJECTION NOT TO SCALE</p>  | <p><b>POLAMCO LTD</b><br/>WESTON LOCK<br/>LOWER BRISTOL ROAD<br/>BATH BA2 1EP</p> | PAGE 1                | UNLESS OTHERWISE SPECIFIED ALL DIMENSIONS IN MILLIMETRES |
| <b>DESIGN APPR</b><br>                       | <b>QUAL APPR</b><br>                                     | THIS DRAWING IS COPYRIGHT AND THE PROPERTY OF POLAMCO LTD. IT MUST NOT BE COPIED, USED FOR MANUFACTURE OR OTHERWISE DISCLOSED WITHOUT PRIOR WRITTEN CONSENT OF THE COMPANY. | <b>ASSY USED ON:</b> BASED ON MIL-DTL-38999 SERIES I                              | MATERIAL<br>SEE ABOVE | NCAGE CODE U5792   |
| <b>ISSUE 1</b><br>DCR<br>4633                | GENERAL TOL<br>LINEAR +/-0.1MM<br>ANGULAR +/- 1°         | <b>TITLE:</b><br>PANEL MOUNT BULKHEAD STUFFING BOX  | <b>PART NUMBER:</b><br>100P3230-**-**-**  | DRAWING NO:<br>P20278 |  |