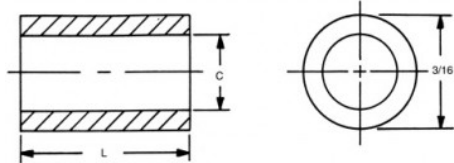




- [Home](#)
- [Products](#)
- [Online Catalog](#)
- [Request Quote](#)
- [Order Online](#)
- [Check Stock](#)
- [Request Print Catalog](#)
- [Request Samples](#)
- [Engineering Data](#)
- [Distributors](#)
- [Capabilities Brochure](#)

Home > [3/16 Round Spacers](#)

3/16 ROUND SPACERS



[Home](#) [Previous](#) [Next](#)
[Related Metric](#)

Ordering Code			
xxxxx	x	xx	x
Length		Material	Finish
	Clearance Hole		

PART: 1111-4-AL

Red ?'s show missing selections. [Help](#)

- [Material Specifications](#)
- [Ordering non-standard items](#)
- [Download a Drawing](#)

Add to Cart

CALL NOW:
203 888-2133



Qty1 *

Qty2

Qty3

Length *

Select	Part No.	Length
<input type="radio"/>	1107A	3/32
<input type="radio"/>	1107	1/8
<input type="radio"/>	1107T	5/32
<input type="radio"/>	1108	3/16
<input type="radio"/>	1108T	7/32
<input type="radio"/>	1109	1/4
<input type="radio"/>	1109T	9/32
<input type="radio"/>	1110	5/16
<input type="radio"/>	1110T	11/32
<input checked="" type="radio"/>	1111	3/8
<input type="radio"/>	1111T	13/32

Clearance Hole *

Select	Code	+0.010-.000
<input type="radio"/>	2	.090
<input checked="" type="radio"/>	4	.115

Material *

Select	Code	Material	RoHS
<input checked="" type="radio"/>	AL	Aluminum	YES
<input type="radio"/>	B	Brass	YES
<input type="radio"/>	SS	Stainless Steel	YES
<input type="radio"/>	S	Steel	YES
<input type="radio"/>	N	Nylon	YES
<input type="radio"/>	PH	Phenolic	YES

Finish *

<input checked="" type="radio"/>	Plain Finish
<input type="radio"/>	1-Cad clear chromate/commercial*
<input type="radio"/>	2-Cad clear chromate*
<input type="radio"/>	3-Cad yellow chromate*
<input type="radio"/>	4-Chrome over nickel
<input type="radio"/>	5-Nickel
<input type="radio"/>	6-Gold iridite

