

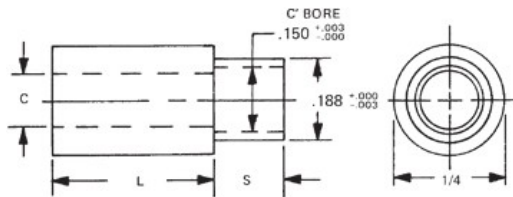


MW Industries, Inc.

- [Home](#)
- [Products](#)
- [Online Catalog](#)
- [Request Quote](#)
- [Order Online](#)
- [Check Stock](#)
- [Request Print Catalog](#)
- [Request Samples](#)
- [Engineering Data](#)
- [Distributors](#)
- [Capabilities Brochure](#)

Home > [1/4 Round Swage Spacers](#)

1/4 ROUND SWAGE SPACERS



[Home](#) [Previous](#) [Next](#)
[Related Metric](#)

Ordering Code				
xxxxx	x	x	xx	x
Length	Shank		Clearance Hole	Material
				Finish

PART: 1537 B 6 AL ?

Red ?'s show missing selections. [Help](#)

[Material Specifications](#)
[Ordering non-standard items](#)

Add to Cart

CALL NOW:
203 888-2133



Qty1 *

Qty2

Qty3

- 15311 5/32
- 1532 3/16
- 1532T 7/32
- 1533 1/4
- 1533T 9/32
- 1534 5/16
- 1534T 11/32
- 1535 3/8
- 1535T 13/32
- 1536 7/16
- 1536T 15/32
- 1537 1/2
- 1537T 17/32
- 1538 3/4

Shank *

Select	S	0.003-0.003	P
<input type="radio"/>	A	.075	1/32
<input checked="" type="radio"/>	B	.105	1/16
<input type="radio"/>	C	.135	3/32
<input type="radio"/>	D	.165	1/8
<input type="radio"/>	E	.230	3/16
<input type="radio"/>	F	.290	1/4

Clearance Hole *

Select	Code	+0.010-.000
<input type="radio"/>	2	.090
<input type="radio"/>	3	.101
<input type="radio"/>	4	.115
<input checked="" type="radio"/>	6	.140

Material *

Select	Code	Material	RoHS
<input checked="" type="radio"/>	AL	Aluminum	YES
<input type="radio"/>	B	Brass	YES
<input type="radio"/>	SS	Stainless Steel	YES
<input type="radio"/>	S	Steel	YES

1/4 Round Swage Spacers

Finish *

<input type="radio"/>	Plain Finish
<input type="radio"/>	1-Cad clear chromate/commercial*
<input type="radio"/>	2-Cad clear chromate*
<input type="radio"/>	3-Cad yellow chromate*
<input type="radio"/>	4-Chrome over nickel
<input type="radio"/>	5-Nickel
<input type="radio"/>	6-Gold iridite*
<input type="radio"/>	7-Clear iridite
<input type="radio"/>	9-Alodine 1200*
<input type="radio"/>	10-Bright chrome
<input type="radio"/>	11-Satin chrome
<input type="radio"/>	12-Zinc