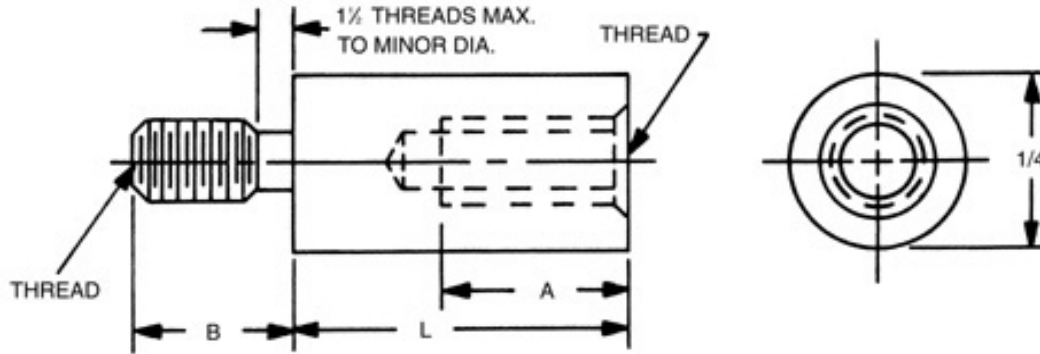


1/4 ROUND MALE-FEMALE STANDOFFS



Order Code: (code is blank)



Contents

Finishes:

select a finish

Quote

[\[How to create part numbers\]](#)

[\[Material Specifica](#)

SELECT	PART NO.	LENGTH
<input type="radio"/>	4030A	7/32
<input type="radio"/>	4030	1/4
<input type="radio"/>	4030T	9/32
<input type="radio"/>	4031	5/16
<input type="radio"/>	4031T	11/32
<input type="radio"/>	4032	3/8
<input type="radio"/>	4032T	13/32
<input type="radio"/>	4033	7/16
<input type="radio"/>	4033T	15/32
<input type="radio"/>	4034	1/2

Select	PART NO.	LENGTH
<input type="radio"/>	4041	15/16
<input type="radio"/>	4041T	31/32
<input type="radio"/>	4042	1
<input type="radio"/>	4043	1-1/16
<input type="radio"/>	4044	1-1/8
<input type="radio"/>	4045	1-3/16
<input type="radio"/>	4046	1-1/4
<input type="radio"/>	4047	1-5/16
<input type="radio"/>	4048	1-3/8
<input type="radio"/>	4049	1-7/16

SELECT	PART NO.	LENGTH
<input type="radio"/>	4055	1-13/16
<input type="radio"/>	4056	1-7/8
<input type="radio"/>	4057	1-15/16
<input type="radio"/>	4058	2
<input type="radio"/>	4059	2-1/8
<input type="radio"/>	4060	2-1/4
<input type="radio"/>	4061	2-3/8
<input type="radio"/>	4062	2-1/2
<input type="radio"/>	4063	2-5/8
<input type="radio"/>	4064	2-3/4

Select	CODE	THREAD
<input type="radio"/>	256	2-56
<input type="radio"/>	440	4-40
<input type="radio"/>	632	6-32
<input type="radio"/>	832	8-32

In short lengths, "A" will be tapped to maximum depth

THREAD LENGTH CODE		
THREAD	A	B