

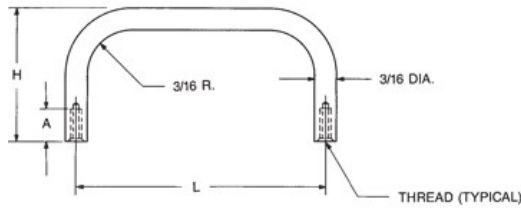


MW Industries, Inc.

- Home
- Products
- Online Catalog
- Request Quote
- Order Online
- Check Stock
- Request Print Catalog
- Request Samples
- Engineering Data
- Distributors
- Capabilities Brochure

Home > 1-1/2 Leg Height 3/16 Round Internal Thread Handles

1-1/2 LEG HEIGHT 3/16 ROUND INTERNAL THREAD HANDLES



[Home](#) [Previous](#) [Next](#)

Ordering Code			
xxxx	xxx	x	x
Length & Height	Thread	Material	Finish

PART: 8098 632 SS

Red ?'s show missing selections. [Help](#)

[Material Specifications](#)
[Ordering non-standard items](#)
[Request a Drawing](#)

CALL NOW:
203 888-2133



Qty1 *

Qty2

Add to Cart

Qty3

Length & Height *

Select	Part No.	L+1/32-1/32	H+1/32-1/32
<input type="radio"/>	8094	1"	1-1/2
<input type="radio"/>	8095	1-1/4	1-1/2
<input type="radio"/>	8096	1-1/2	1-1/2
<input type="radio"/>	8097	1-3/4	1-1/2
<input checked="" type="radio"/>	8098	2"	1-1/2
<input type="radio"/>	8099	3"	1-1/2
<input type="radio"/>	8100	4"	1-1/2
<input type="radio"/>	8101	5"	1-1/2

Thread *

Select	Code	Thread	A
<input type="radio"/>	440	4-40	1/4-3/8
<input checked="" type="radio"/>	632	6-32	5/16-3/8

Material *

Select	Code	Material	RoHS
<input type="radio"/>	A	Aluminum	YES
<input type="radio"/>	B	Brass	YES
<input checked="" type="radio"/>	SS	Stainless Steel	YES
<input type="radio"/>	S	Steel	YES

Finish *

<input checked="" type="radio"/>	Plain Finish
<input type="radio"/>	1-Cad clear chromate/commercial*
<input type="radio"/>	2-Cad clear chromate*
<input type="radio"/>	3-Cad yellow chromate*
<input type="radio"/>	4-Chrome over nickel
<input type="radio"/>	5-Nickel
<input type="radio"/>	6-Gold iridite
<input type="radio"/>	7-Clear iridite
<input type="radio"/>	9-Alodine 1200*
<input type="radio"/>	10-Bright chrome
<input type="radio"/>	11-Satin chrome
<input type="radio"/>	12-Zinc

