

**SPECIFICATIONS:**

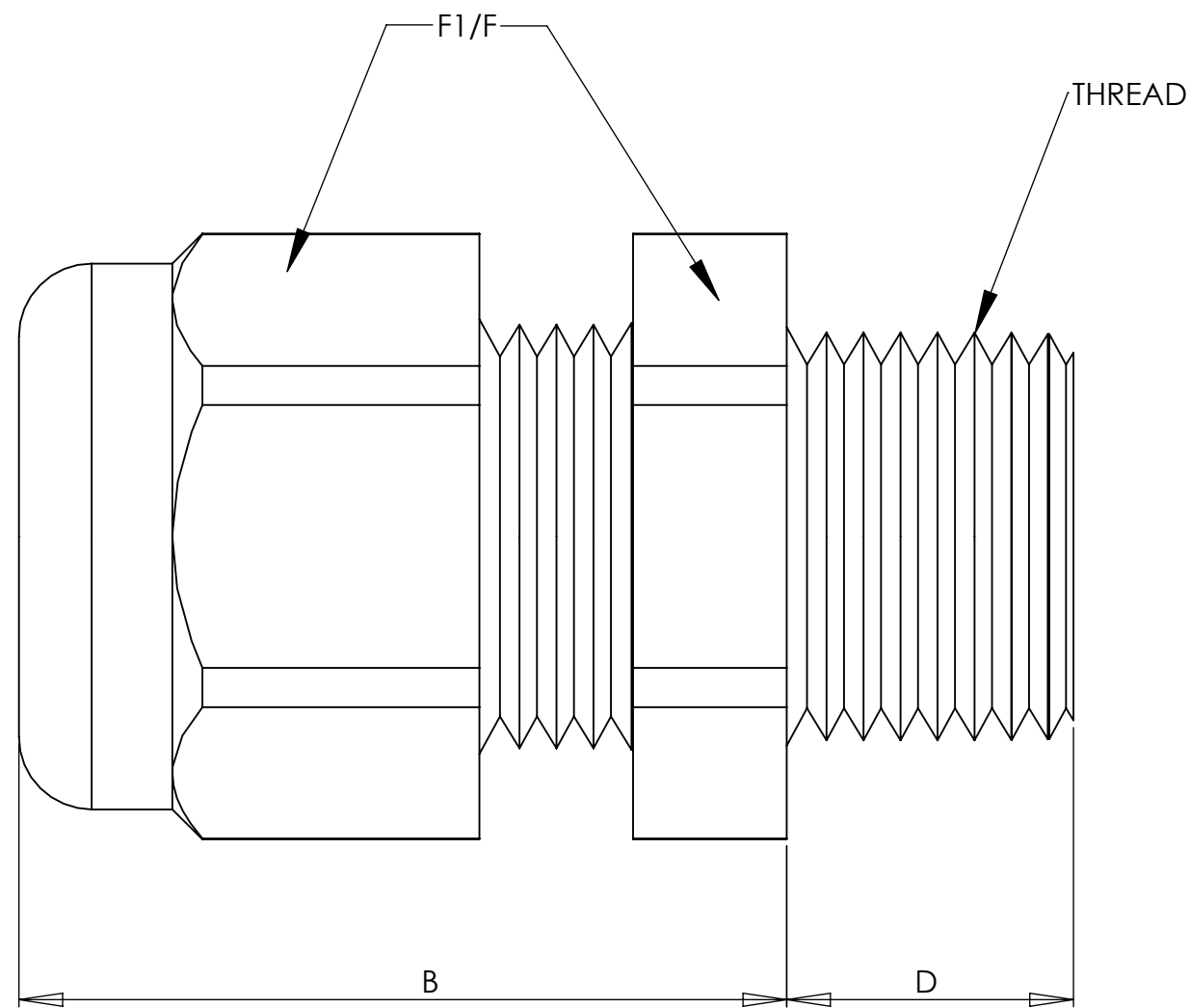
**Pressure rating:**  
150 PSIG (10 BAR) NEMA 4x and 6  
(Submersible) IP68

**Materials:**

Body & Dome Nut: PVDF  
Form Seal & Optional O-Ring: Viton®

**Operating Temperature:**

-31°F to 302°F (-35°C to 150°C)  
Short term 356°F (180°C)

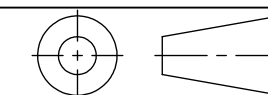


PART NUMBERS	CABLE RANGE inches (mm)	THREAD TYPE AND SIZE For thread specs see page 29	DIMENSIONS INCHES (MM)			
			A Clearance Hole $+0.010^{\circ}$ 0	B Body Length	D Thread Length	F <sub>1</sub> /F Wrenching Flats
CD12MA-TE CD12MR-TE	.11 - .26 (3 - 6.5) .08 - .20 (2 - 5)	M12 x 1.5	.47 (12)	.83 (21)	.31 (8)	.59 (15)
CD16MA-TE CD16MR-TE	.16 - .31 (4 - 8) .08 - .24 (2 - 6)	M16 x 1.5	.63 (16)	.87 (22)	.31 (8)	.75 (19)
CD20MA-TE CD20MR-TE	.24 - .47 (6 - 12) .20 - .35 (5 - 9)	M20 x 1.5	.79 (20)	1.06 (27)	.35 (9)	.94 (24)
CD25MA-TE CD25MR-TE	.51 - .71 (13 - 18) .35 - .63 (9 - 16)	M25 x 1.5	.98 (25)	1.22 (31)	.43 (11)	1.30 (33)
CD32MA-TE CD32MR-TE	.71 - .98 (18 - 25) .51 - .79 (13 - 20)	M32 x 1.5	1.26 (32)	1.53 (39)	.43 (11)	1.65 (42)

**NOTES:**

- 1) GENERAL DIMENSIONS DRAWINGS.
- 2) DIMENSIONS [ ] ARE IN INCHES.
- 3) DIMENSIONS NOTED ARE FOR REFERENCE ONLY.

Third angle projection



14853 HINDSDALE AVE, SUITE D  
CENTENNIAL, CO 80112-4240, USA  
TEL: +1-303-699-1135  
TOLL FREE: +1-800-456-9012  
E MAIL: [info@sealconusa.com](mailto:info@sealconusa.com),  
WEBSITE: [www.sealconusa.com](http://www.sealconusa.com)

