

**CABTITE CGS M32 BK****Weidmüller Interface GmbH & Co. KG**

Klingenbergstraße 26

D-32758 Detmold

Germany

www.weidmueller.com

**Similar to illustration**

For metric M20 to M63 through-holes, the Cabtite cable entry system offers separable cable glands for cables with and without plugs. In case of maintenance or changes in the system, pre-assembled cables with diameters of 2 to 35 mm can be inserted quickly and safely in panels or enclosures. Reliable sealing of IP66 in accordance with DIN EN 60529 and an absolutely secure fitting (strain relief based on DIN EN 62444) is ensured by placing slotted sealing elements with a wave cut around the cable before being inserted into one of the two halves of the cable gland. The separable system ensures easy and fast installation. After inserting the sealing element, the two halves of the cable gland are simply snapped together. A locknut, which is also separable, on the inside of the panel ensures a reliable and secure hold.

**General ordering data**

Version	separable cable gland, Cabtite (cable entry system), Polyamide, glass fibre-reinforced, Deep black, Height: 23.7 mm, M 32, -40 °C... 120 °C, IP66
Order No.	<a href="#">2584160000</a>
Type	CABTITE CGS M32 BK
GTIN (EAN)	4050118616583
Qty.	10 pc(s).
Replacement parts	<a href="#">2584070000</a>

**CABTITE CGS M32 BK****Weidmüller Interface GmbH & Co. KG**

Klingenbergstraße 26

D-32758 Detmold

Germany

www.weidmueller.com

**Technical data****Dimensions and weights**

Depth	38.7 mm	Depth (inches)	1.524 inch
Height	23.7 mm	Height (inches)	0.933 inch
Width	40 mm	Width (inches)	1.575 inch
Length	38.7 mm	Length (inches)	1.524 inch
Net weight	12.4 g		

**Temperatures**

Operating temperature	-40 °C...120 °C
-----------------------	-----------------

**General information**

AF size 2	40 mm	External thread	M 32
Halogen	No	Length of thread	15 mm
Material	Polyamide, glass fibre-reinforced	Opening diameter	32 mm
Pitch of thread	1.5 mm	Protection degree	IP66
Sealing	TPE	Sealing element	1 small sealing element
Silicone	No	Tightening torque, max.	4 Nm
Tightening torque, min.	3.8 Nm	UL 94 flammability rating	V-0

**Classifications**

ETIM 6.0	EC000441	ETIM 7.0	EC000441
ETIM 8.0	EC000441	ETIM 9.0	EC000441
ECLASS 9.0	27-14-44-32	ECLASS 9.1	27-14-44-32
ECLASS 10.0	27-14-44-32	ECLASS 11.0	27-14-44-32
ECLASS 12.0	27-14-08-01	ECLASS 13.0	27-14-08-01

**Approvals**

Approvals



ROHS

Conform

**Downloads**

Approval/Certificate/Document of Conformity	<a href="#">EU Declaration of Conformity - Cable entry system</a>
Engineering Data	<a href="#">CAD data – STEP</a>
User Documentation	<a href="#">Installation Instructions</a>
Catalogues	<a href="#">Catalogues in PDF-format</a>

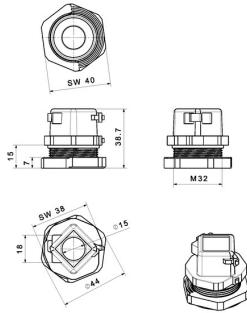
**CABTITE CGS M32 BK**

**Weidmüller Interface GmbH & Co. KG**  
Klingenbergstraße 26  
D-32758 Detmold  
Germany

[www.weidmueller.com](http://www.weidmueller.com)

**Drawings**

**Dimensioned drawing**



**CABTITE CGS M32 BK**

**Weidmüller Interface GmbH & Co. KG**  
 Klingenbergstraße 26  
 D-32758 Detmold  
 Germany

www.weidmueller.com

**Replacement parts**

**Cabtite - Separable Cable Glands**



For metric M20 to M63 through-holes, the Cabtite cable entry system offers separable cable glands for cables with and without plugs. In case of maintenance or changes in the system, pre-assembled cables with diameters of 2 to 35 mm can be inserted quickly and safely in panels or enclosures. Reliable sealing of IP66 in accordance with DIN EN 60529 and an absolutely secure fitting (strain relief based on DIN EN 62444) is ensured by placing slotted sealing elements with a wave cut around the cable before being inserted into one of the two halves of the cable gland. The separable system ensures easy and fast installation. After inserting the sealing element, the two halves of the cable gland are simply snapped together. A locknut, which is also separable, on the inside of the panel ensures a reliable and secure hold.

**General ordering data**

Type	CABTITE LNS M32 BK	Version
Order No.	<a href="#">2584070000</a>	separable locknut, Cabtite (cable entry system), Polyamide, glass fibre-
GTIN (EAN)	4050118616446	reinforced, Deep black, Height: 40 mm, Width: 40 mm, Depth: 7 mm,
Qty.	10 pc(s).	-40 °C...120 °C

## CABTITE CGS M32 BK

Weidmüller Interface GmbH &amp; Co. KG

Klingenbergstraße 26

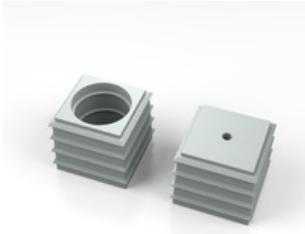
D-32758 Detmold

Germany

www.weidmueller.com

## Accessories

## SE small 20x20mm in grey



Whether a large or small cable diameter – Cabtite always offers the right seal insert.

The conical shape of the sealing elements allows the previously positioned snap-in grid inlays to be pushed in easily from the inside to the outside. It reliably seals intermediate spaces and provides strain relief in accordance with DIN EN 62444. The seal inserts combined with the frames achieve an IP 66 degree of protection. As a result of its slotted design with wave cut, it is especially suitable for pre-assembled cables.

- The black seal inserts are designed for a particularly high operating temperature and offer fire safety class UL 94 HB
- The grey sealing elements comply with fire safety class UL 94 V0 and are therefore suitable for the demands of the railway industry
- By using multiple inserts, two or more cables, as well as special cables, can be passed through a sealing element

## General ordering data

Type	CABTITE SE 6-7 SML GY	Version
Order No.	<a href="#">2583460000</a>	Sealing element, Cabtite (cable entry system), TPE, Light Grey, Height:
GTIN (EAN)	4050118616668	20.3 mm, Width: 20.3 mm, Depth: 17.7 mm, -40 °C...90 °C, IP66
Qty.	10 pc(s).	
Type	CABTITE SE 2/5-6 SML GY	Version
Order No.	<a href="#">2584890000</a>	Sealing element, Cabtite (cable entry system), TPE, Light Grey, Height:
GTIN (EAN)	4050118616781	20.3 mm, Width: 20.3 mm, Depth: 17.7 mm, -40 °C...90 °C, IP66
Qty.	10 pc(s).	
Type	CABTITE BSE SML GY	Version
Order No.	<a href="#">2583350000</a>	Sealing element, Cabtite (cable entry system), TPE, Light Grey, Height:
GTIN (EAN)	4050118615609	20.3 mm, Width: 20.3 mm, Depth: 17.7 mm, -40 °C...90 °C, IP66
Qty.	10 pc(s).	
Type	CABTITE SE 5-6 SML GY	Version
Order No.	<a href="#">2583450000</a>	Sealing element, Cabtite (cable entry system), TPE, Light Grey, Height:
GTIN (EAN)	4050118616538	20.3 mm, Width: 20.3 mm, Depth: 17.7 mm, -40 °C...90 °C, IP66
Qty.	10 pc(s).	

## CABTITE CGS M32 BK

**Weidmüller Interface GmbH & Co. KG**  
 Klingenbergstraße 26  
 D-32758 Detmold  
 Germany

www.weidmueller.com

## Accessories

### Blanking plug

The blanking plugs are used for the safe closing of unneeded cable passages in the sealing elements.



### General ordering data

Type	CABTITE BP 5MM PA	Version
Order No.	<a href="#">2652330000</a>	Blind plug, Cabtite (cable entry system), Polyamide, white, Height: 12
GTIN (EAN)	4050118661835	mm, Width: 5 mm, Depth: 12 mm, -40 °C...120 °C, IP66
Qty.	25 pc(s).	
Type	CABTITE BP 10MM PA	Version
Order No.	<a href="#">2652380000</a>	Blind plug, Cabtite (cable entry system), Polyamide, white, Height: 16
GTIN (EAN)	4050118662481	mm, Width: 10 mm, Depth: 16 mm, -40 °C...120 °C, IP66
Qty.	25 pc(s).	
Type	CABTITE BP 9MM PA	Version
Order No.	<a href="#">2652370000</a>	Blind plug, Cabtite (cable entry system), Polyamide, white, Height: 16
GTIN (EAN)	4050118662474	mm, Width: 9 mm, Depth: 16 mm, -40 °C...120 °C, IP66
Qty.	25 pc(s).	
Type	CABTITE BP 6MM PA	Version
Order No.	<a href="#">2652340000</a>	Blind plug, Cabtite (cable entry system), Polyamide, white, Height: 16
GTIN (EAN)	4050118661842	mm, Width: 6 mm, Depth: 16 mm, -40 °C...120 °C, IP66
Qty.	25 pc(s).	
Type	CABTITE BP 7MM PA	Version
Order No.	<a href="#">2652350000</a>	Blind plug, Cabtite (cable entry system), Polyamide, white, Height: 16
GTIN (EAN)	4050118662450	mm, Width: 7 mm, Depth: 16 mm, -40 °C...120 °C, IP66
Qty.	25 pc(s).	
Type	CABTITE BP 8MM PA	Version
Order No.	<a href="#">2652360000</a>	Blind plug, Cabtite (cable entry system), Polyamide, white, Height: 16
GTIN (EAN)	4050118662467	mm, Width: 8 mm, Depth: 16 mm, -40 °C...120 °C, IP66
Qty.	25 pc(s).	

**CABTITE CGS M32 BK****Weidmüller Interface GmbH & Co. KG**

Klingenbergstraße 26

D-32758 Detmold

Germany

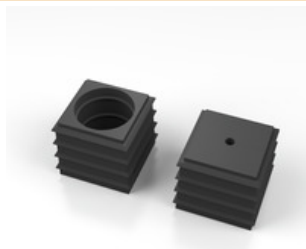
[www.weidmueller.com](http://www.weidmueller.com)**Accessories****Round splitting stamp for metric cable glands**

Weidmüller punching tools should be your first choice for making cut-outs in your electrical cabinets!

- PG cable glands
- M cable glands
- Special cable glands

**General ordering data**

Type	KOS-M32	Version
Order No.	<a href="#">9204910000</a>	Sheet holes
GTIN (EAN)	4032248694143	
Qty.	1 pc(s).	

**SE small 20x20mm in black**

Whether a large or small cable diameter – Cabtite always offers the right seal insert.

The conical shape of the sealing elements allows the previously positioned snap-in grid inlays to be pushed in easily from the inside to the outside. It reliably seals intermediate spaces and provides strain relief in accordance with DIN EN 62444. The seal inserts combined with the frames achieve an IP 66 degree of protection. As a result of its slotted design with wave cut, it is especially suitable for pre-assembled cables.

- The black seal inserts are designed for a particularly high operating temperature and offer fire safety class UL 94 HB
- The grey sealing elements comply with fire safety class UL 94 V0 and are therefore suitable for the demands of the railway industry
- By using multiple inserts, two or more cables, as well as special cables, can be passed through a sealing element

**General ordering data**

Type	CABTITE SE 4/4-5 SML BK	Version
Order No.	<a href="#">2583560000</a>	Sealing element, Cabtite (cable entry system), TPE, Deep black,
GTIN (EAN)	4050118616897	Height: 20.3 mm, Width: 20.3 mm, Depth: 17.7 mm, -40 °C...120 °C,
Qty.	10 pc(s).	IP66
Type	CABTITE BSE SML BK	Version
Order No.	<a href="#">2584790000</a>	Sealing element, Cabtite (cable entry system), TPE, Deep black,
GTIN (EAN)	4050118616057	Height: 20.3 mm, Width: 20.3 mm, Depth: 17.7 mm, -40 °C...120 °C,
Qty.	10 pc(s).	IP66
Type	CABTITE SE 7-8 SML BK	Version
Order No.	<a href="#">2584670000</a>	Sealing element, Cabtite (cable entry system), TPE, Deep black,
GTIN (EAN)	4050118616989	Height: 20.3 mm, Width: 20.3 mm, Depth: 17.7 mm, -40 °C...120 °C,
Qty.	10 pc(s).	IP66

Creation date March 12, 2024 5:03:29 PM CET

Catalogue status 09.03.2024 / We reserve the right to make technical changes.

7

**Data sheet****CABTITE CGS M32 BK**

**Weidmüller Interface GmbH & Co. KG**  
Klingenbergstraße 26  
D-32758 Detmold  
Germany

[www.weidmueller.com](http://www.weidmueller.com)

**Accessories**

Type	CABTITE SE 9-10 SML BK	Version
Order No.	<a href="#">2584080000</a>	Sealing element, Cabtite (cable entry system), TPE, Deep black,
GTIN (EAN)	4050118616309	Height: 20.3 mm, Width: 20.3 mm, Depth: 17.7 mm, -40 °C...120 °C,
Qty.	10 pc(s).	IP66