

## MCZ SERIES MCZ O 24VUC

**Weidmüller Interface GmbH & Co. KG**

Klingenbergstraße 26

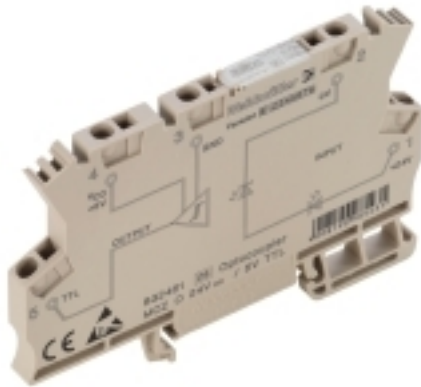
D-32758 Detmold

Germany

Fon: +49 5231 14-0

Fax: +49 5231 14-292083

www.weidmueller.com



Similar to illustration

The MCZ O optos, with a width of only 6 mm, are the thinnest in their class.

They are distinguished by the following features:

- Tension clamp connection
- Integrated cross-connection in input/output  
Clampable conductor cross-section is 0.5 to 1.5 mm<sup>2</sup>.

### General ordering data

Type	MCZ O 24VUC
Order No.	<a href="#">8287730000</a>
Version	MCZ SERIES, solid-state relays, 1 NO contact (Transistor), Rated control voltage: 24 V UC ±20 % , Rated switching voltage: 24 VDC ±20%, Continuous current: 2 A, Tension-clamp connection
GTIN (EAN)	4008190985400
Qty.	10 pc(s).

Creation date August 9, 2020 2:16:32 AM CEST

Catalogue status 24.07.2020 / We reserve the right to make technical changes.

**MCZ SERIES**  
**MCZ O 24VUC**

**Weidmüller Interface GmbH & Co. KG**  
 Klingenbergstraße 26  
 D-32758 Detmold  
 Germany  
 Fon: +49 5231 14-0  
 Fax: +49 5231 14-292083  
 www.weidmueller.com

**Technical data****Dimensions and weights**

Width	6.1 mm	Width (inches)	0.24 inch
Height	91 mm	Height (inches)	3.583 inch
Depth	63.2 mm	Depth (inches)	2.488 inch
Net weight	22.6 g		

**Temperatures**

Humidity	40 °C / 93 % rel. humidity, no condensation	Operating temperature, max.	40 °C
Operating temperature, min.	-25 °C	Storage temperature, max.	60 °C
Storage temperature, min.	-40 °C	Operating temperature	-25 °C...40 °C
Storage temperature	-40 °C...60 °C		

**Probability of failure**

MTTF	1,430 Years
------	-------------

**Environmental Product Compliance**

REACH SVHC	Lead 7439-92-1
------------	----------------

**Rated data UL**

Certificate No. (cURus)	E141197
-------------------------	---------

**Control side**

Rated control voltage	24 V UC $\pm$ 20 %	Nominal control current	10 mA DC $\pm$ 20 %, 10 mA AC $\pm$ 20 %
Power rating	195 mW / 220 mVA	Cut-in / dropout voltage	14.4 V / 13 V AC 15 V / 15 V DC
Status indicator	LED	Protective circuit	Rectifier

**Load side**

Rated switching voltage	24 VDC $\pm$ 20%	Continuous current	2 A
Switch-on delay	$\leq$ 10 ms	Switch-off delay	$\leq$ 10 ms
Voltage drop at max. load	$\leq$ 1.8 V	Short-circuit-proof	Yes
Protective circuit, load side	Varistor	max. switching frequency (AC control voltage)	10 Hz
max. switching frequency (DC control voltage)	30 Hz	Nominal auxiliary voltage	24 V DC $\pm$ 20 %

**Contact data**

Contact type	1 NO contact (Transistor)
--------------	---------------------------

**General data**

Rail	TS 35	Colour	beige
UL 94 flammability rating	V-0		

**MCZ SERIES**  
**MCZ O 24VUC**

**Weidmüller Interface GmbH & Co. KG**  
 Klingenbergstraße 26  
 D-32758 Detmold  
 Germany  
 Fon: +49 5231 14-0  
 Fax: +49 5231 14-292083  
 www.weidmueller.com

**Technical data****Insulation coordination**

Rated voltage	300 V	Pollution severity	2
Surge voltage category	III	Clearance and creepage distances for control side - load side	≥ 5.5 mm
Dielectric strength for control side - load side	1 kV <sub>eff</sub> / 1 s	Dielectric strength to mounting rail	4 kV <sub>eff</sub> / 1 Min.
Impulse withstand voltage	6 kV (1.2/50 μs)	Protection degree	IP20

**Further details of approvals / standards**

Standards	DIN EN 50178, UL508	Certificate No. (CSA)	154685-1198742
Certificate No. (cURus)	E141197		

**Connection data**

Wire connection method	Tension-clamp connection	Stripping length, rated connection	8 mm
Clamping range, rated connection	1.5 mm <sup>2</sup>	Clamping range, min.	0.5 mm <sup>2</sup>
Clamping range, max.	1.5 mm <sup>2</sup>	Wire connection cross section AWG, min.	AWG 26
Wire connection cross section AWG, max.	AWG 16	Wire cross-section, solid, min.	0.5 mm <sup>2</sup>
Wire cross-section, solid, max.	1.5 mm <sup>2</sup>	Wire connection cross-section, finely stranded, min.	0.5 mm <sup>2</sup>
Wire connection cross section, finely stranded, max.	1.5 mm <sup>2</sup>	Wire cross-section, finely stranded, min. (AWG)	AWG 26
Wire cross-section, finely stranded, max. (AWG)	AWG 16	Wire connection cross-section, finely stranded with wire-end ferrules DIN 46228/4, min.	0.5 mm <sup>2</sup>
Wire connection cross-section, finely stranded with wire-end ferrules DIN 46228/4, max.	1.5 mm <sup>2</sup>	Conductor cross-section, flexible, AEH (DIN 46228-1), min.	0.5 mm <sup>2</sup>
Conductor cross-section, flexible, AEH (DIN 46228-1), max.	1.5 mm <sup>2</sup>	Blade size	0.6 x 3.5 mm

**Classifications**

ETIM 6.0	EC001504	ETIM 7.0	EC001504
eClass 9.0	27-37-16-04	eClass 9.1	27-37-16-04
eClass 10.0	27-37-16-04	UNSPSC	30-21-18-01

**Approvals**

Approvals



ROHS Conform

**Downloads**

Approval/Certificate/Document of Conformity	<a href="#">EU Konformitätserklärung / EU Declaration of Conformity</a>
Brochure/Catalogue	<a href="#">CAT 4.2 ELECTR 18/19 EN</a>
Engineering Data	<a href="#">EPLAN, WSCAD</a>
Engineering Data	<a href="#">STEP</a>
User Documentation	<a href="#">Beipackzettel / Package Insert - multilingual</a>

Creation date August 9, 2020 2:16:32 AM CEST

Catalogue status 24.07.2020 / We reserve the right to make technical changes.

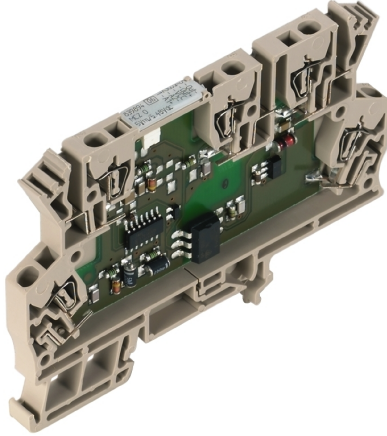
**Data sheet**

**MCZ SERIES  
MCZ O 24VUC**

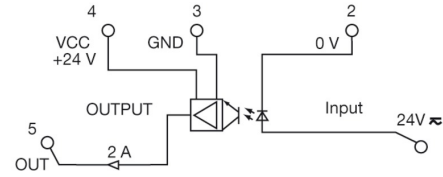
**Weidmüller Interface GmbH & Co. KG**  
 Klingenbergstraße 26  
 D-32758 Detmold  
 Germany  
 Fon: +49 5231 14-0  
 Fax: +49 5231 14-292083  
 www.weidmueller.com

**Drawings**

**Wiring diagram**



Similar to illustration



Schaltsymbol

**Dimensional drawing**

