

RIDERSERIES RCI RCIKIT 115VAC 1CO LD/PB

Weidmüller Interface GmbH & Co. KG
Klingenbergstraße 26
D-32758 Detmold
Germany
Fon: +49 5231 14-0
Fax: +49 5231 14-292083
www.weidmueller.com

Product image



Similar to illustration

Modular system comprised of:

- relay socket for rail mounting
- LED indicator unit
- retaining clip
- plug-in relay
- markers

General ordering data

| | |
|------------|--|
| Type | RCIKIT 115VAC 1CO LD/PB |
| Order No. | 8897060000 |
| Version | RIDERSERIES RCI, Relay module, Number of contacts: 1 CO contact with test button AgNi 90/10, Rated control voltage: 115 V AC, Continuous current: 16 A ⁽¹⁾ , Screw connection |
| GTIN (EAN) | 4032248646845 |
| Qty. | 10 pc(s). |

Creation date April 21, 2020 11:37:41 AM CEST

Catalogue status 17.04.2020 / We reserve the right to make technical changes.

**RIDERSERIES RCI
RCIKIT 115VAC 1CO LD/PB**

Weidmüller Interface GmbH & Co. KG
 Klingenbergstraße 26
 D-32758 Detmold
 Germany
 Fon: +49 5231 14-0
 Fax: +49 5231 14-292083
 www.weidmueller.com

Technical data**Dimensions and weights**

| | | | |
|------------|---------|-----------------|------------|
| Width | 15.8 mm | Width (inches) | 0.622 inch |
| Height | 77 mm | Height (inches) | 3.031 inch |
| Depth | 70.2 mm | Depth (inches) | 2.764 inch |
| Net weight | 61.7 g | | |

Temperatures

| | | | |
|-----------------------------|--|-----------------------------|----------------|
| Humidity | 40 °C / 93 % rel. humidity, no condensation | Operating temperature, max. | 70 °C |
| Operating temperature, min. | -40 °C | Storage temperature, max. | 70 °C |
| Storage temperature, min. | -40 °C | Operating temperature | -40 °C...70 °C |
| Storage temperature | -40 °C...70 °C | | |

Environmental Product Compliance

| | |
|------------|----------------|
| REACH SVHC | Lead 7439-92-1 |
|------------|----------------|

Input

| | | | |
|-----------------------|---------------|--------------------------------|--------------------|
| Rated control voltage | 115 V AC | Rated current AC | 7 mA |
| Power rating | 0.8 VA | Pull-in/drop-out voltage, typ. | 86.3 V / 17.3 V AC |
| Coil resistance | 8100 Ω ± 15 % | Status indicator | red LED |

Output

| | | | |
|---|--|---|--------------|
| Rated switching voltage | 250 V AC | Max. switching voltage, AC | 400 V |
| Continuous current | 16 A ⁽¹⁾ | Inrush current | 30 A / 4 s |
| AC switching capacity (resistive), max. | 4000 VA | DC switching capacity (resistive), max. | 384 W @ 24 V |
| Switch-on delay | ≤ 8 ms | Switch-off delay | ≤ 6 ms |
| Min. switching power | 1 mA @ 24 V, 10 mA @ 12 V, 100 mA @ 5 V | Max. switching frequency at rated load | 0.1 Hz |

Contact data

| | | | |
|--------------|---|-------------------------|---|
| Contact type | 1 CO contact with test button (AgNi 90/10) | Mechanical service life | AC coil 5 x 10 ⁶ switching cycles, DC coil 10 x 10 ⁶ switching cycles |
|--------------|---|-------------------------|---|

General data

| | | | |
|--------------------------------------|-------|-------------|---|
| Rail | TS 35 | Test button | yes (lockable, just when removing the detent lock) |
| Mechanical switch position indicator | Yes | Colour | black |

Insulation coordination

| | | | |
|---|------------------|-------------------------------------|-----------------------------|
| Rated voltage | 250 V | Surge voltage category | III |
| Pollution severity | 2 | Insulating material group | IIIa |
| Protection degree | IP20 | Dielectric strength, Input/Output | 5 kV _{eff} / 1 min |
| Creepage and clearance distance input - output | ≥ 8 mm | Dielectric strength of open contact | 1 kV _{eff} / 1 min |
| Impulse withstand voltage | 5 kV (1.2/50 μs) | | |

**RIDERSERIES RCI
RCIKIT 115VAC 1CO LD/PB**

Weidmüller Interface GmbH & Co. KG
 Klingenbergstraße 26
 D-32758 Detmold
 Germany
 Fon: +49 5231 14-0
 Fax: +49 5231 14-292083
 www.weidmueller.com

Technical data**Further details of approvals / standards**

| | | | |
|-------------------------------|----------------|------------------------------|----------------|
| Standards | DIN EN 50178 | Certificate no. (CSA) relay | 249409-2426937 |
| Certificate no. (CSA) base | 249409-2295474 | Certificate No. (DNVGL) | TAA000011A |
| Certificate no. (cURus) relay | E224238 | Certificate no. (cURus) base | E223759 |

Connection data

| | | | |
|---|---------------------|---|-------------------|
| Wire connection method | Screw connection | Stripping length, rated connection | 8 mm |
| Tightening torque, min. | 0.5 Nm | Tightening torque, max. | 0.7 Nm |
| Clamping range, rated connection | 2.5 mm ² | Clamping range, min. | 1 mm ² |
| Clamping range, max. | 2.5 mm ² | Wire cross-section, solid, min. | 1 mm ² |
| Wire cross-section, solid, max. | 2.5 mm ² | Wire connection cross-section, finely stranded, min. | 1 mm ² |
| Wire connection cross section, finely stranded, max. | 2.5 mm ² | Wire connection cross-section, finely stranded with wire-end ferrules DIN 46228/4, min. | 1 mm ² |
| Wire connection cross-section, finely stranded with wire-end ferrules DIN 46228/4, max. | 2.5 mm ² | Conductor cross-section, flexible, AEH (DIN 46228-1), min. | 1 mm ² |
| Conductor cross-section, flexible, AEH (DIN 46228-1), max. | 2.5 mm ² | Wire connection cross section, finely stranded, two clampable wires, min. | 1 mm ² |
| Wire cross-section, finely stranded, two clampable wires, max. | 1.5 mm ² | Blade size | size PZ1 |

Classifications

| | | | |
|-------------|-------------|------------|-------------|
| ETIM 6.0 | EC001437 | ETIM 7.0 | EC001437 |
| eClass 9.0 | 27-37-16-01 | eClass 9.1 | 27-37-16-01 |
| eClass 10.0 | 27-37-16-01 | UNSPSC | 30-21-19-17 |

Product information

Product information 1) For full continuous current (16 A), relay connections 11–21, 12–22 and 14–24 must be bridged. IP20 without connected conductor at complete opened clamping yoke connection.

Approvals

Approvals



ROHS Conform

Downloads

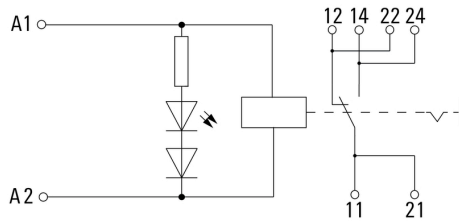
| | |
|---|---|
| Approval/Certificate/Document of Conformity | EU Konformitätserklärung / EU Declaration of Conformity |
| Brochure/Catalogue | CAT 4.2 ELECTR 18/19 EN |
| Engineering Data | EPLAN, WSCAD, Zuken E3.S |
| Engineering Data | STEP |

**RIDERSERIES RCI
RCIKIT 115VAC 1CO LD/PB**

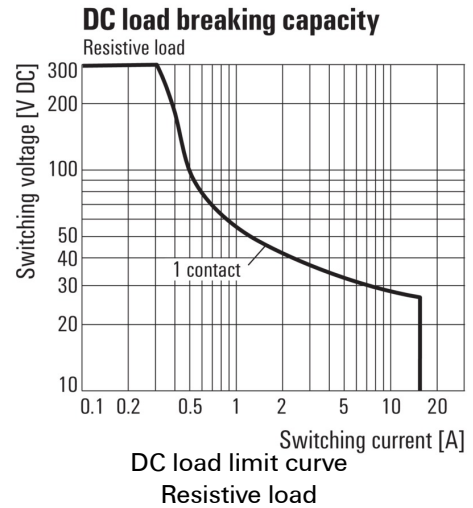
Weidmüller Interface GmbH & Co. KG
Klingenbergstraße 26
D-32758 Detmold
Germany
Fon: +49 5231 14-0
Fax: +49 5231 14-292083
www.weidmueller.com

Drawings

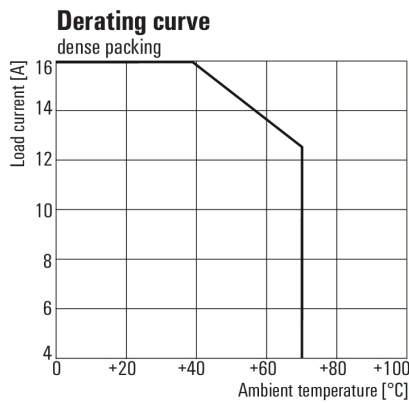
Wiring diagram



Graph



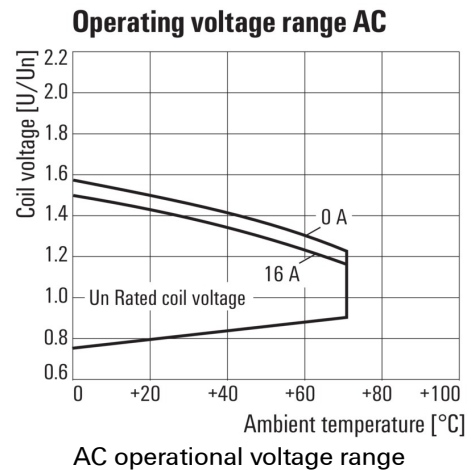
Graph



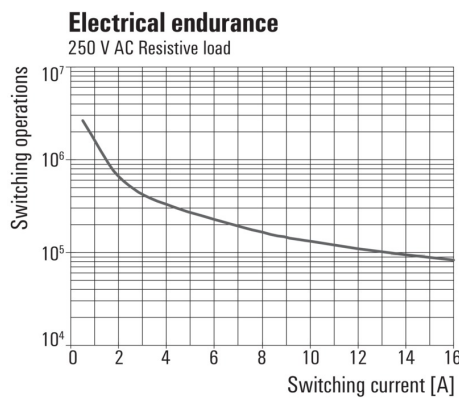
For full continuous current (16 A), socket connections 11-21, 12-22 and 14-24 must be bridged.

Derating curve
Relay in combination with base

Graph

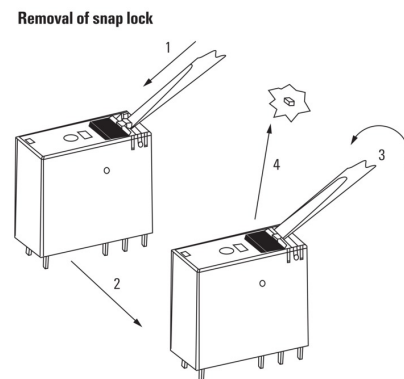


Graph



Electrical service life 250 V AC resistive load
250 V AC resistive load

Dimensional drawing



Detailed drawing
Removal of the test button detent lock

Data sheet**RIDERSERIES RCI
RCIKIT 115VAC 1CO LD/PB**

Weidmüller Interface GmbH & Co. KG
Klingenbergstraße 26
D-32758 Detmold
Germany
Fon: +49 5231 14-0
Fax: +49 5231 14-292083
www.weidmueller.com

Drawings**Dimensional drawing**